

EPSON EH-LS10000 PROJECTOR



EPSON[®]
EXCEED YOUR VISION



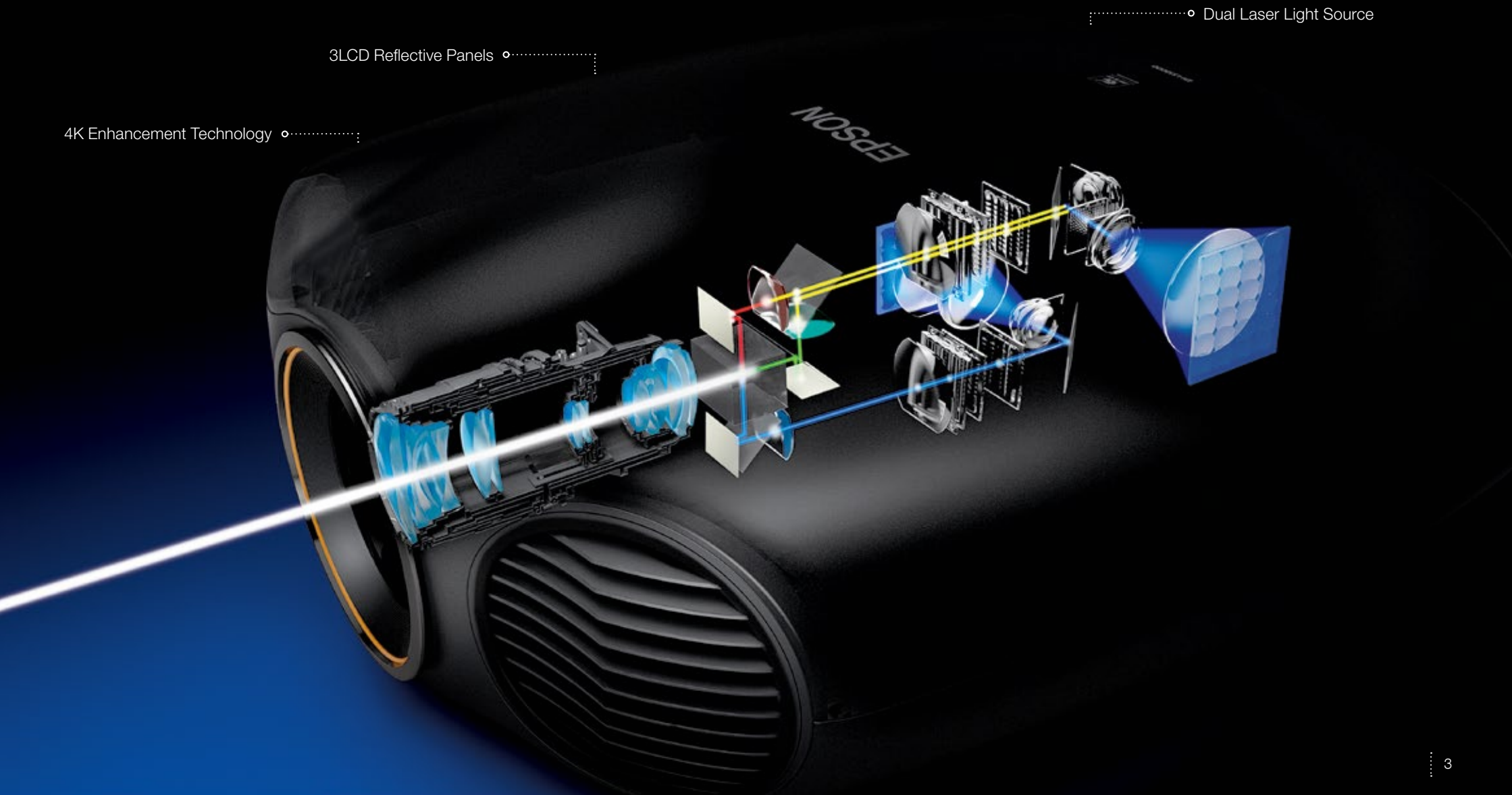
..... Innovative 4K Enhancement Technology¹

PREPARE TO BE AMAZED

The ultimate home theatre demands the ultimate projector. Bring a state-of-the-art movie theatre experience to your home with Epson's groundbreaking EH-LS10000 projector. Featuring revolutionary 3LCD Reflective laser projection technology, this high-definition projector delivers phenomenal image quality and colour brightness that elevates any screening to an enthralling cinematic experience.

CINEMA LIKE YOU'VE NEVER SEEN BEFORE

Combining 3LCD Reflective panels and a dual laser light source, these projectors deliver the blackest blacks and bright, true-to-life colours with one of the widest colour gamuts in the industry. With 4K Enhancement Technology¹ all of the subtleties that the filmmakers originally captured suddenly become visible in beautiful, crisp clarity. It's not just projection — it's Epson home theatre perfection.





• Exceptional contrast for richer blacks and brighter whites.

AT LAST, LASER PROJECTION COMES HOME

Considering the advantages offered by a laser system, Epson's decision to use a laser light source for the EH-LS10000 was an obvious choice. The laser engine's long lifespan of up to 30,000 hours² provides virtually worry-free operation. And, there's no waiting for the projector to warm-up or cool down — the projector reaches maximum brightness and turns off almost immediately. Plus, high-speed contrast control ensures both bright and dark scenes look their best.

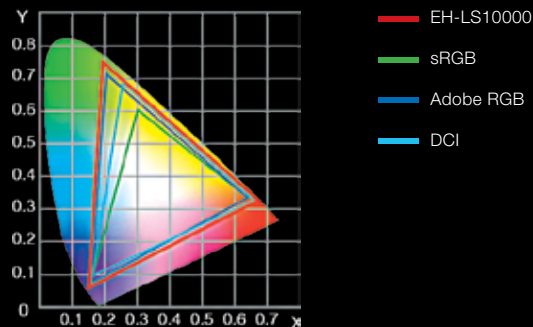
DUAL LASER LIGHT SOURCE

The dual blue laser diode illumination system — one for red and green, the other for blue — ensures balanced, high-quality images.



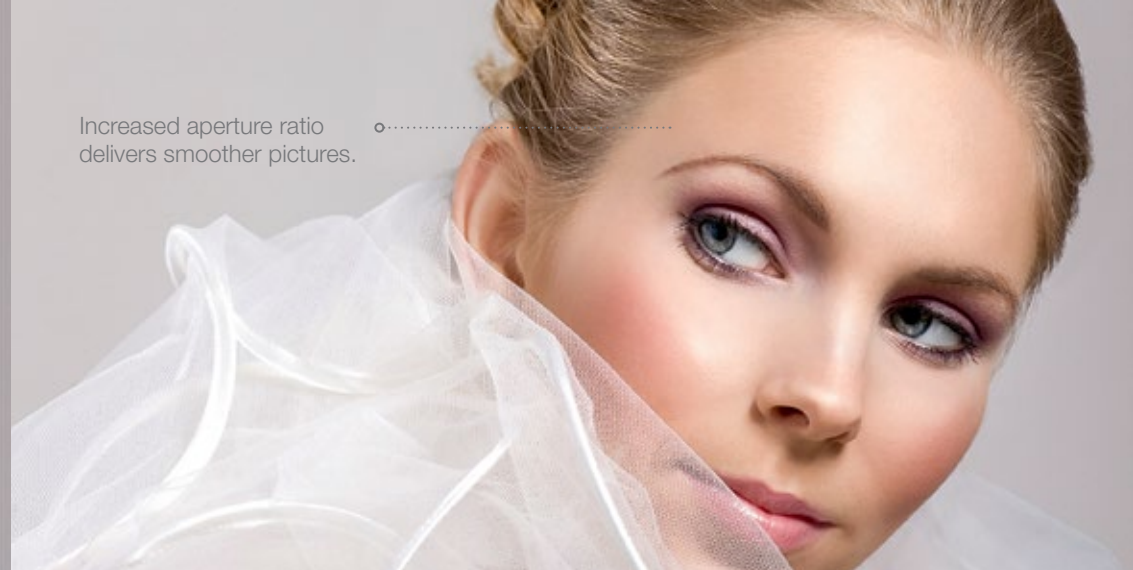
WIDE COLOUR GAMUT

Enjoy brilliant, colour-rich performance. The full sRGB colour gamut is visible even in the brightest mode. And, the DCI colour gamut — the digital cinema standard — is also achievable.





Increased aperture ratio delivers smoother pictures.



NOW PLAYING: 3LCD REFLECTIVE TECHNOLOGY WITH ABSOLUTE BLACK

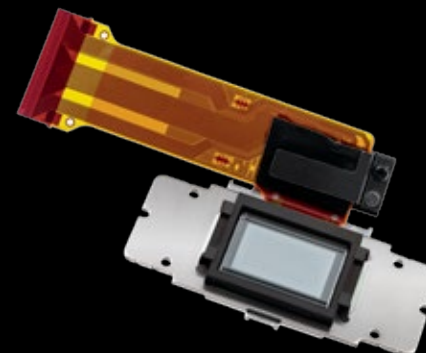
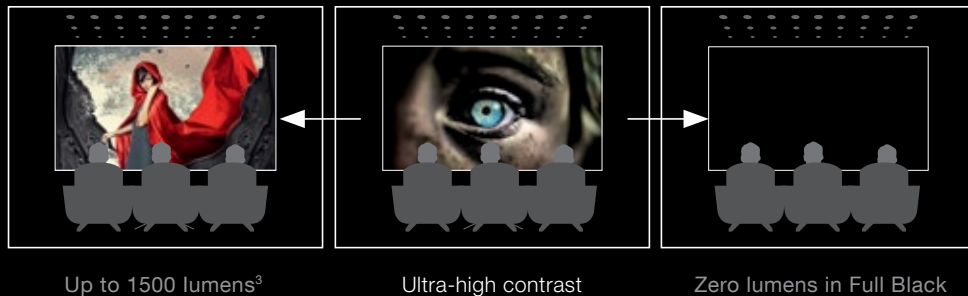
For decades, 3LCD projectors have been praised within the industry for delivering superior colour and gradation. Now, with Epson's innovative 3LCD Reflective system, you get remarkably high contrast as well. Featuring advanced liquid crystal on quartz technology, these 3LCD Reflective projectors boast exceptional performance, including an improved pixel density and increased aperture ratio for smoother, high-quality images.

ABSOLUTE BLACK CONTRAST RATIO

Experience incredible, unprecedented black levels — with zero lumens during Absolute Black scenes.

3LCD REFLECTIVE PANELS

Light reflection reduces and corrects the variation of polarisation, delivering rich, deep blacks.





Step into the picture. ○



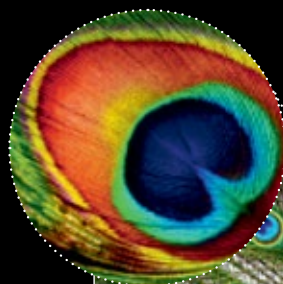
○ Get wrapped up in the details.

EXPERIENCE STUNNING 4K ENHANCEMENT

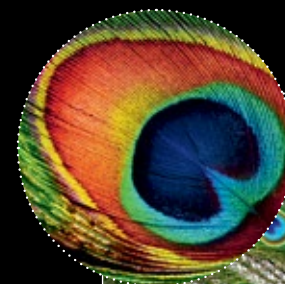
Discover a whole new way to watch movies — the way filmmakers intended. Epson's 4K Enhancement Technology¹ delivers astonishing picture quality. Now, every subtle intricacy is captured — even your most-loved films will offer something new. Plus, Epson's Super-resolution with Detail Enhancement Technology refines surface details for true-to-life images that pop off the screen. Users can adjust levels of sharpness and detail enhancement for optimal viewing. This isn't just a new way to watch movies — it's the best way.

4K ENHANCEMENT TECHNOLOGY

4K Enhancement makes standard and HD content come alive. From the feathers in a plume to freckles on a nose, you'll see every incredible detail.



Full HD

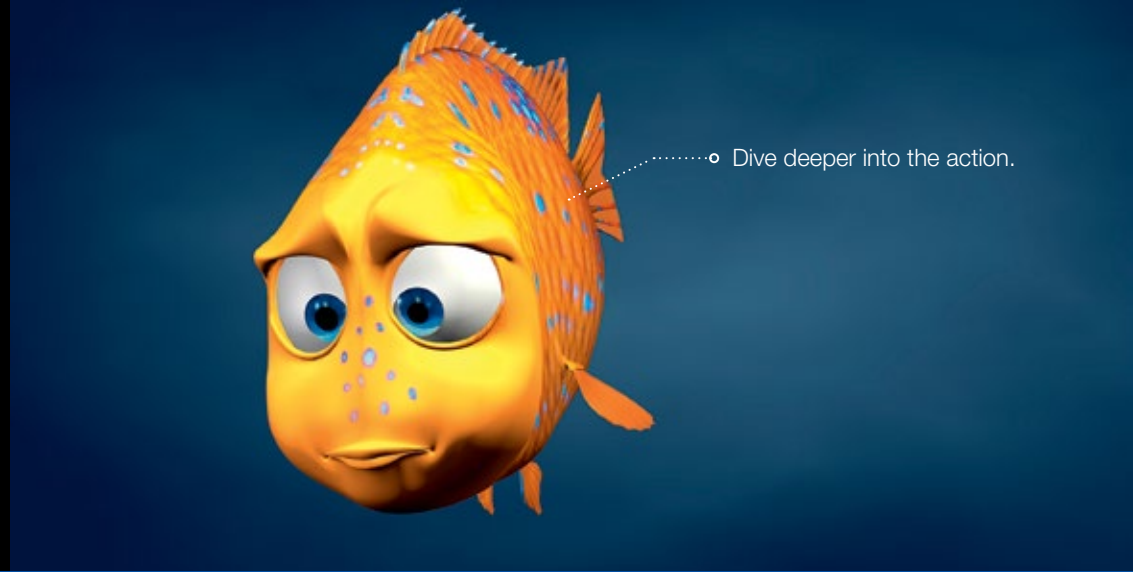


4K Enhancement





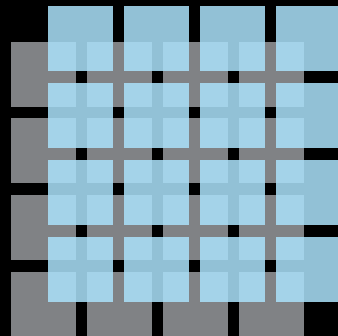
It's impossible to look away.



Dive deeper into the action.

PIXEL SCALING

Epson's revolutionary 4K Enhancement Technology shifts each pixel diagonally by 0.5 pixels for twice the vertical and horizontal resolution.



FRONT-ROW SEATS TO WATCH THE ACTION

Enjoy unbelievable sharpness and clarity, even closer to the screen. 4K Enhancement delivers immersive images.





Picture-perfect gradations.

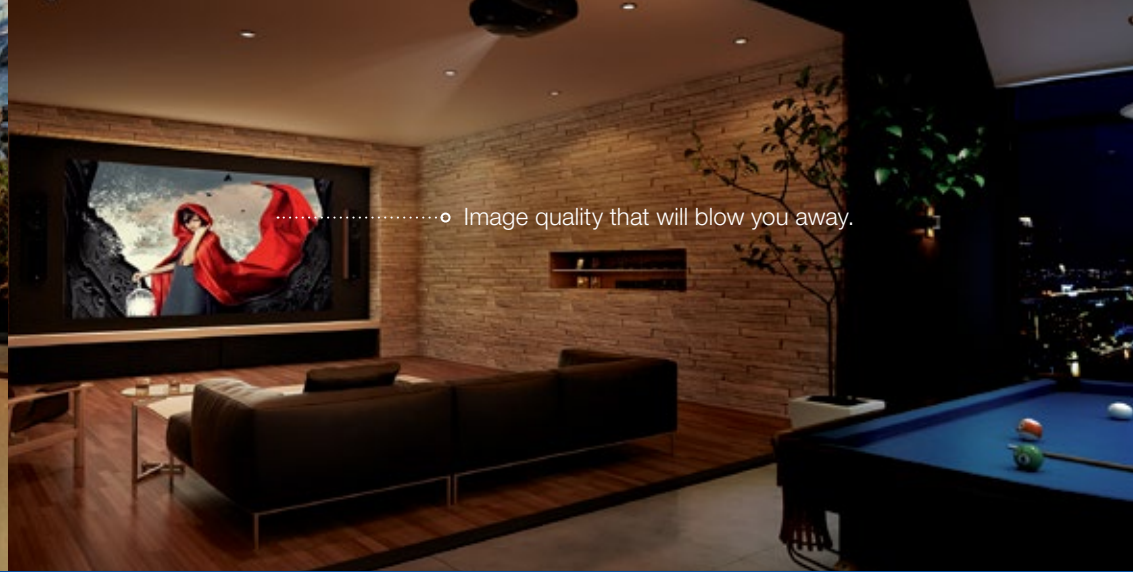


Image quality that will blow you away.

WITNESS HOME CINEMA IN A WHOLE NEW LIGHT

When it came to designing the EH-LS10000 projector, Epson's engineers focused on a singular goal: achieving the best possible image quality, for an unbelievable home theatre experience. Unlike laser projectors that are intended for business or commercial settings — where brightness is the priority — this projector was designed to deliver higher contrast and a more natural colour expression. The result is a projector that is capable of Absolute Black like you've never seen, as well as smooth, dark gradations and finely-tuned colours.

COLOUR MODES

Choose from an array of colour modes for an optimised viewing experience. Colour modes include Dynamic, Living Room, Natural, Cinema, Adobe RGB, Digital Cinema, 3D Dynamic and 3D Cinema.

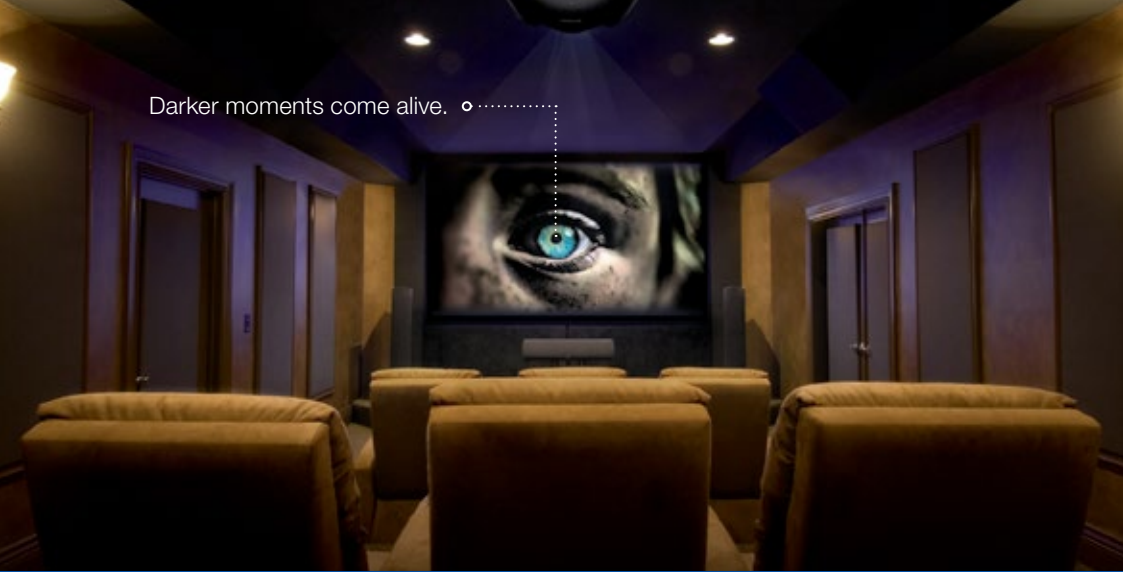


RELIABLE PERFORMANCE

Enjoy fast, reliable projection from a constant beam of light. The laser light source delivers images that are more stable.



Darker moments come alive. ◦.....



Find yourself in a sea of colour. ◦.....



Projected screen images are simulated.

FINELY-TUNED COLOUR

The laser light source means that the correct colour gamut is fully realised at all times.

ISF® CALIBRATION

Exceptional video performance with ISF Calibration tools.



PICTURE-PERFECT, PROVEN 2D & 3D TECHNOLOGIES

Whether you're watching a cinema classic or the latest 3D blockbuster, the advanced projection features on the EH-LS10000 deliver outstanding performances. These innovations include Epson's unique Super-resolution with Detail Enhancement Technology, exceptional Frame Interpolation capabilities, as well as powerful Bright 3D Drive projection. Experience a new standard of home entertainment.

SUPER-RESOLUTION WITH DETAIL ENHANCEMENT

Super-resolution defines edges for standard and HD content, while Detail Enhancement refines surface detail for true-to-life images.



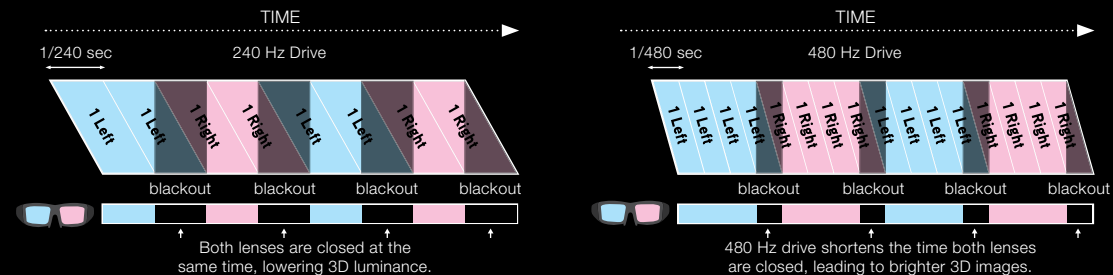
FRAME INTERPOLATION

Frame Interpolation technology inserts multiple new frames between the original ones, so motion appears smoother, sharper and more realistic.



BRIGHT 3D DRIVE

Bright 3D Drive Technology doubles the image refresh rate from 240 Hz to 480 Hz and reduces the blackout time of 3D glasses to provide greater brightness when viewing 3D content.



POWERFUL INNOVATION IN AN ELEGANT PACKAGE

Elegant body. Bold, glamorous curves. Textured black surface. These features are all part of a premium product that's packed with innovation and power. Every inch of this projector has been considered. There's no wasted space — and no exposed cables. Even the dark, matte finish of the EH-LS10000 is itself an innovation: It's not just beautiful to look at, but it absorbs light, too.



TOTAL RECALL: POWERED LENS POSITION MEMORY

Fast, quiet and precise, the ES-LS10000 allows you to preset up to 10 positions for zoom, focus and lens shift for both standard projection and wide cinema ratios. Project 2.40, 2.35, 1.85 and 1.78 aspect ratios on the same screen without an anamorphic lens — and no downtime when switching between ratios. Watch movies on a grander scale at the touch of a button, without any disruptive black bars.

16:9



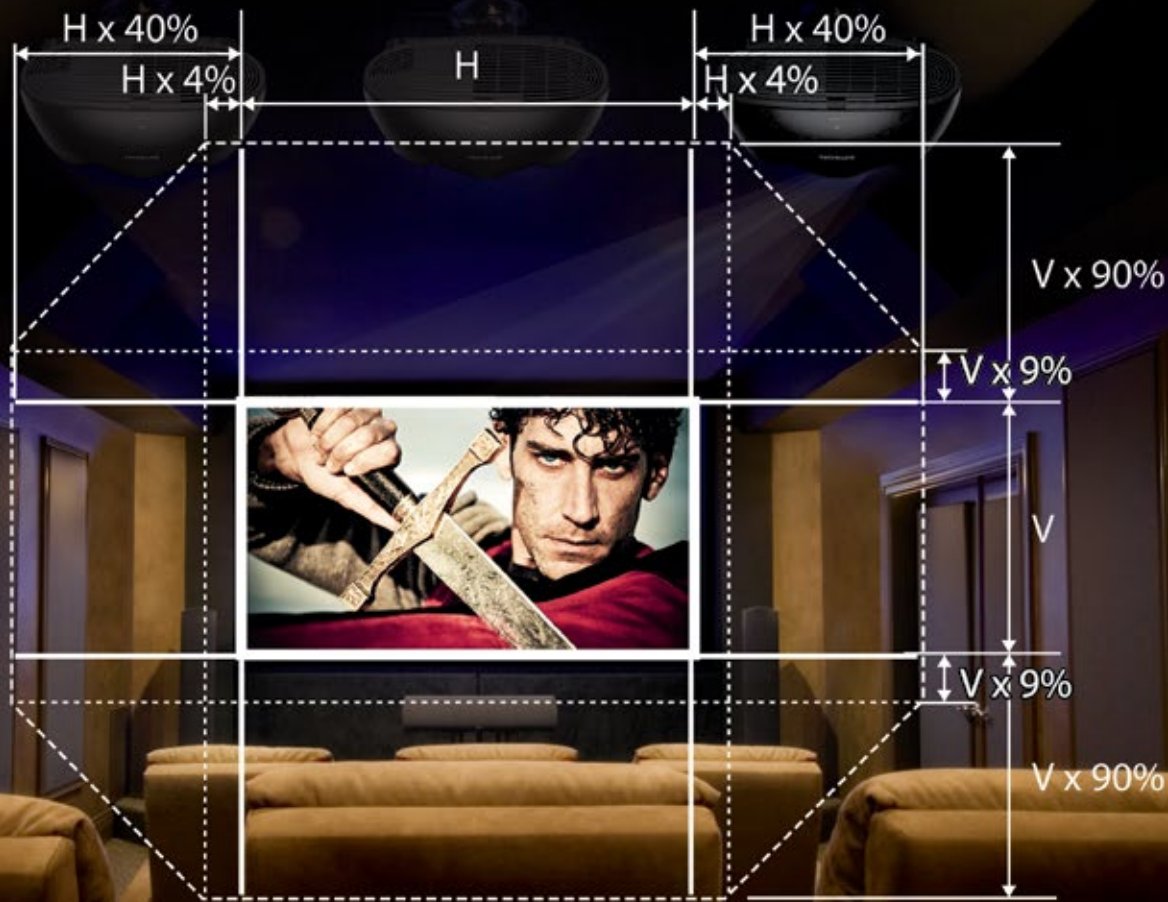
16:9 movie on a 2.40:1 screen

2.40:1



2.40:1 movie on a 2.40:1 screen





H – Horizontal V – Vertical

DESIGNED FOR EXTRAORDINARY INSTALLATION FLEXIBILITY

In addition to added reliability and amazing colour performance, Epson's advanced projection technology enables a wide range of lens shift capabilities for outstanding installation flexibility. The EH-LS10000 has an incredible range of up to ± 90 percent on the vertical axis and up to ± 40 percent on the horizontal axis. Users can operate the lens shift functions using the remote control, the projector control panel, or control commands.

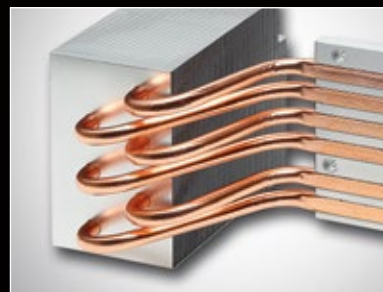
A PERFORMER THAT'S THE STRONG, SILENT TYPE

When it comes to home cinema, you want to focus on what's in front of you — and nothing else. That's the idea behind the innovative, efficient cooling system of the EH-LS10000. With noise levels as low as 19 dB, these are among the quietest projectors in the industry. It's time to enjoy engaging cinema without distraction — all the better for those moments when the picture takes your breath away.



COOLING EFFICIENCY

A whisper-quiet fan that's so silent, you won't even notice there's a projector in the room.



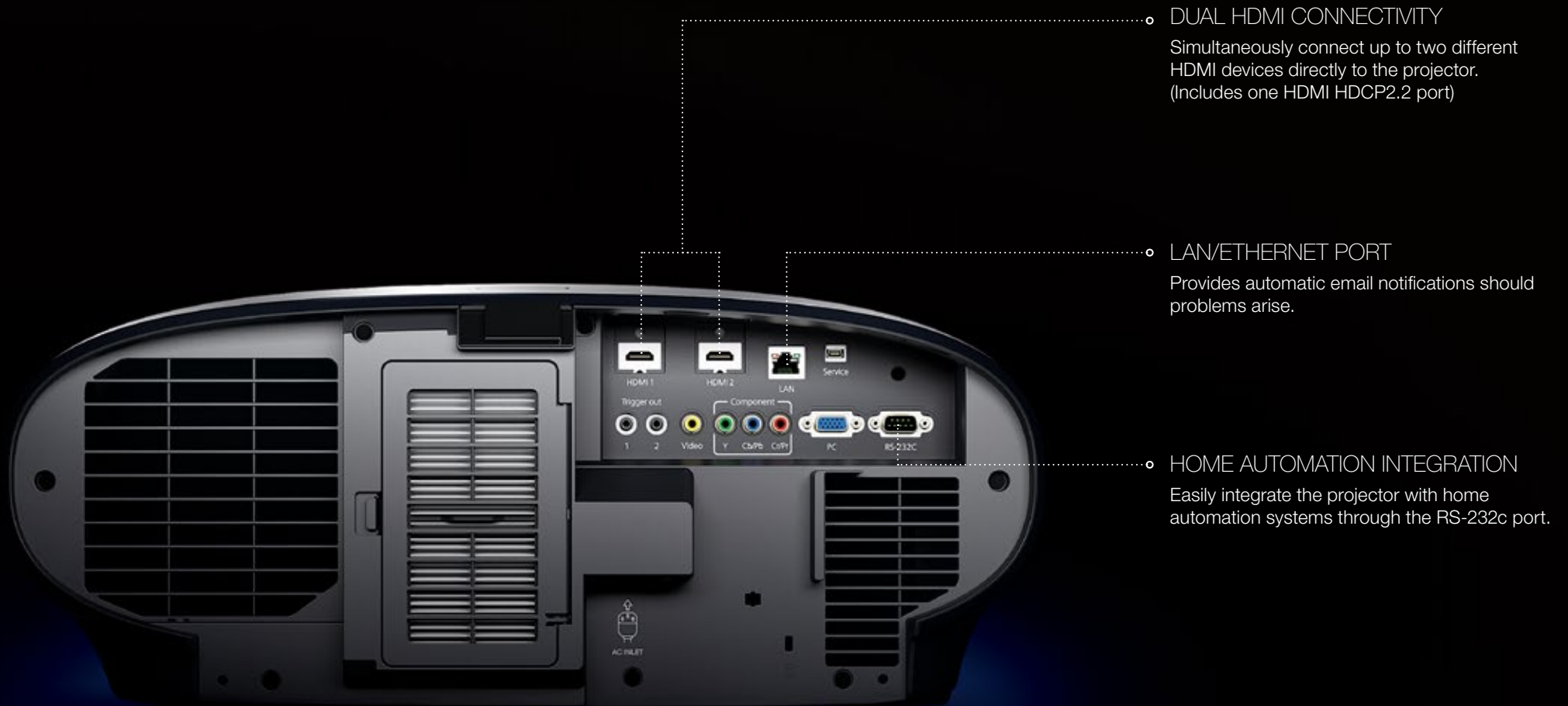
PREMIUM COMPONENTS

The projectors feature thermal-conductive copper piping to help dissipate heat.



PRACTICAL FUNCTIONALITY, CONVENIENT CONNECTIVITY

Take the trouble out of troubleshooting with enriched network functionality and convenient hands-free features that make servicing the projector easier than ever before. Dealer representatives can securely and remotely monitor the projector's status to address issues that may arise. There is even an email notification function that can send status alerts to a designated recipient.



○ DUAL HDMI CONNECTIVITY
Simultaneously connect up to two different HDMI devices directly to the projector.
(Includes one HDMI HDCP2.2 port)

○ LAN/ETHERNET PORT
Provides automatic email notifications should problems arise.

○ HOME AUTOMATION INTEGRATION
Easily integrate the projector with home automation systems through the RS-232c port.

SPECIFICATIONS

EH-LS10000

Projection System	3LCD Reflective, 3-chip technology Poly-silicon TFT active matrix
Projection Methods	Front / rear / ceiling mount
Driving Method	Epson Poly-silicon TFT active matrix, 0.74-inch wide panel Reflective HTPS
Projected Output	HD, 2D, 3D, 1080p
Pixel Number	2,073,600 dots (1920 × 1080) × 3
Colour Brightness³ (Colour Light Output)	1500 lumens
White Brightness³ (White Light Output)	1500 lumens
Aspect Ratio	Native 16:9 widescreen (4:3 resize), compatible with 4:3 and 2.35:1 video formats with Normal, Full or Zoom Modes
Native Resolution	Native 1080p (1920 × 1080)
Laser Type	Laser Diode 41.9 mW (Output)
Light Source Life²	Up to 30,000 hours (ECO Mode)
Size (projected distance)	100" diagonal (wide: 9.3' – tele: 19.8')
Contrast Ratio	Absolute Black (Full White 1500 lm / Full Black 0 lm)
Projection Lens Type	Powered optical zoom / Powered focus
F-Number	2.5 – 3.7
Focal Length	21.3 mm – 44.7 mm
Zoom Ratio	1 – 2.1
Powered Lens Shift	Vertical: 90% max (up and down with horizontal centered), Horizontal: 40% max (left and right with vertical centered)
Lens Cover	Powered, slide lens shutter
Lens Iris	Fine adjustments
Lens Position	The following 3 items are saved in memory: Lens Shift Position, Zoom Position, Focus Position
Memory Positions	10 (Memory 1 – 10)
Display Performance	1920 × 1080 native 1080p; HD, 2D, 3D, 2D to 3D conversion
Aspect Mode	Auto / Normal / Full / Zoom / Anamorphic Wide / Horizontal Squeeze
Super-resolution / 4K Enhancement¹	Off / 1 / 2 / 3 / 4 / 5 / 4K-1 / 4K-2 / 4K-3 / 4K-4 / 4K-5
Frame Interpolation	Off / Low / Normal / High (2D and 3D Mode)
Colour Modes	Dynamic, Living Room, Natural, Cinema, Adobe RGB, Digital Cinema, 3D Dynamic, 3D Cinema
Input Signal HDMI	480i / 576i / 480p / 576p / 720p / 1080i / 1080p / 4K × 2K
Terminal Inputs	2 HDMI (1 HDMI HDCP2.2), 1 RS-232c, 1 RCA (composite), 3 RCA (component), 1 VGA D-sub 15 pin (computer input), 1 Wired LAN (RJ45, 100 Mbps) for command and control only
Computer Compatibility	PC, Mac [®]
Fan Noise	19 dB (4K Enhancement: Off)
Power Supply Voltage	100 – 240V AC ± 10%, 50/60 Hz
Power Consumption	220 – 240V, Laser on 442W, Laser on (ECO) 262W, Standby Mode – Communication on 3.3W / off 0.38W
Dimensions / Weight	550mm × 553mm × 225mm (W × D × H), Weight: 18Kg



- 1 4K Enhancement Technology shifts each pixel diagonally by 0.5 pixels to double the resolution to 3840 × 2160 and surpass Full HD image quality. Resolution is 1920 × 1080 in 3D Mode.
- 2 30,000 hours is the estimated projector life when used in ECO mode. The projector and any accessories supplied with it come with a three year warranty, except 3D Glasses which come with one year warranty. Actual hours may vary depending on usage environment.
- 3 Colour brightness (colour light output) and white brightness (white light output) will vary depending on usage conditions. Colour light output measured in accordance with IDMS 15.4; white light output measured in accordance with ISO 21118:2012. Caution: Class 2 laser product. Do not stare into the beam.

For further information please contact your local Epson office or visit www.epson-europe.com

Austria 01 253 49 78 333 Belgium +32 (0)2 792 04 47 Czech 800/142 052 Denmark 44 50 85 85 Finland 0201 552 091 France 09 74 75 04 04 (Cost of local call, operator charges may apply) Germany +49 (0) 2159/92 79 500 Greece 210-8099499 Hungary 06800 147 83 Ireland 01 436 7742 Italy 02-660321 10 (0,12 €/min) Luxembourg +352 27860692 Middle East +9714 8872172 Netherlands +31 (0)20 708 5099 Norway +47 67 11 37 00 Poland 0-0-800 4911299 (0,16 zł/min) Portugal 707 222 111 Russia (095) 777-03-55 Slovakia 0850 111 429 South Africa (+2711) 465-9621 Spain 93 582 15 00 Sweden 0771-400135 (Mobilsamtal – 0,99 kr/min, Lokala samtal – 0,30 kr/min, Utlandssamtal – 0,89 kr/min) Switzerland 022 592 7923 Turkey (0212) 3360303 United Kingdom 0871 222 6702

Trademarks and registered trademarks are the property of Seiko Epson Corporation or their respective owners. Product information is subject to change without prior notice.

EPSON[®]