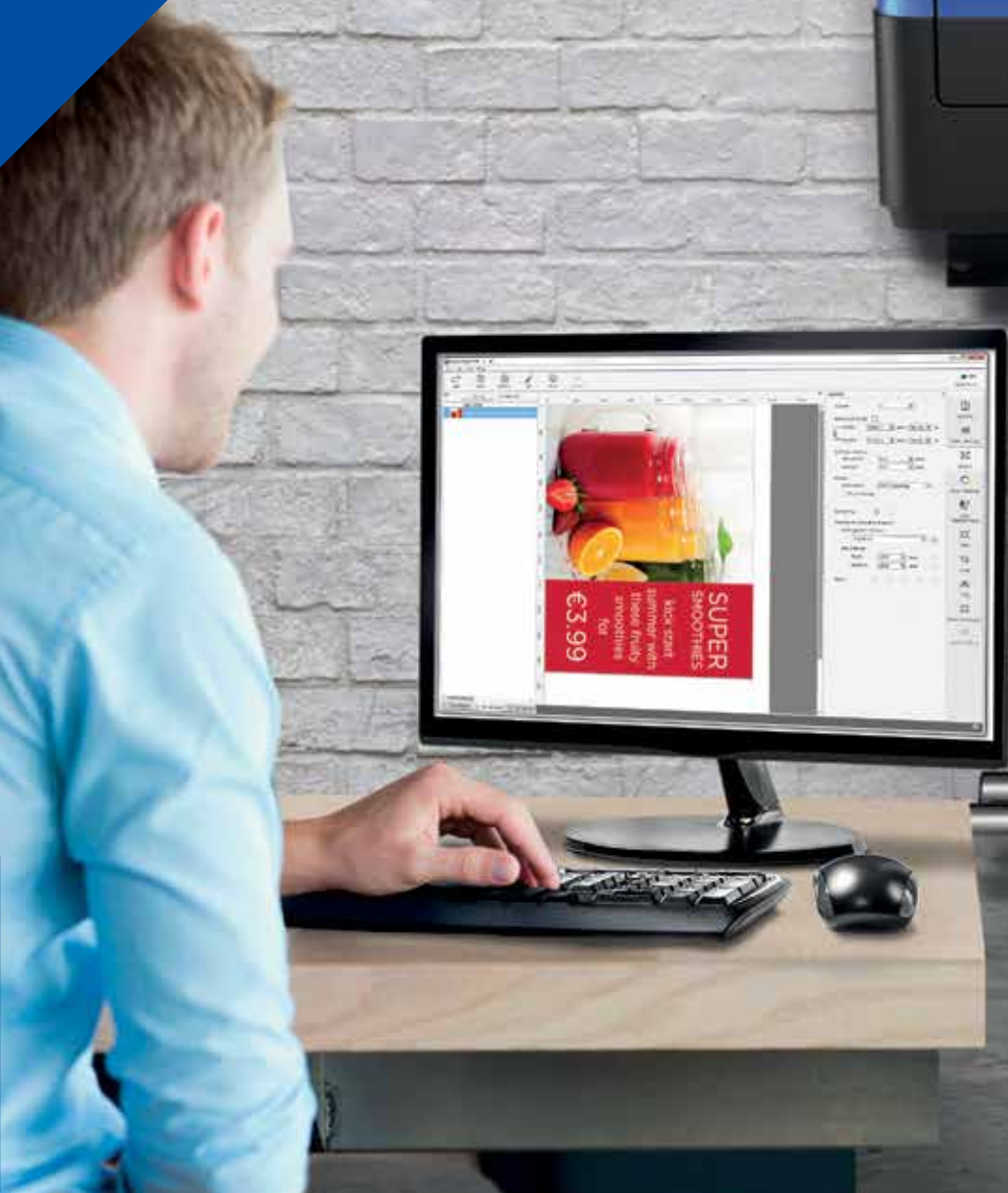


Epson Edge Print Software

For simplified
high-quality
printing



EPSON[®]
EXCEED YOUR VISION



Powerful and feature-rich, Epson Edge Print software is easy-to-use and provides a simplified print-ready solution.

A complete solution is all you need

Epson Edge Print software is included as standard, with the SureColor SC-S and SC-F Series printers¹. This easy-to-use, yet feature-rich software provides a complete solution and gives you the opportunity to boost your business, speed up printing and increase high-quality production.

Calculate the value of each print

Work in harmony with the LFP Accounting tool to help you calculate the cost of each print, based on ink and paper consumption. This gives you better visibility and provisioning on each job.

Bring designs to life

Deliver smooth gradations, consistent colour matching and prints with minimal graininess.

Simplify production

Set-up one to ten printers quickly, and be up and running as soon as the Epson Print Edge software is installed.

Provide consistent, high-quality outputs

Make the most of your Epson printers (SureColor SC-S and SC-F series printers¹) wide colour gamut. When used in combination with media profiles, you'll get superb results every time.

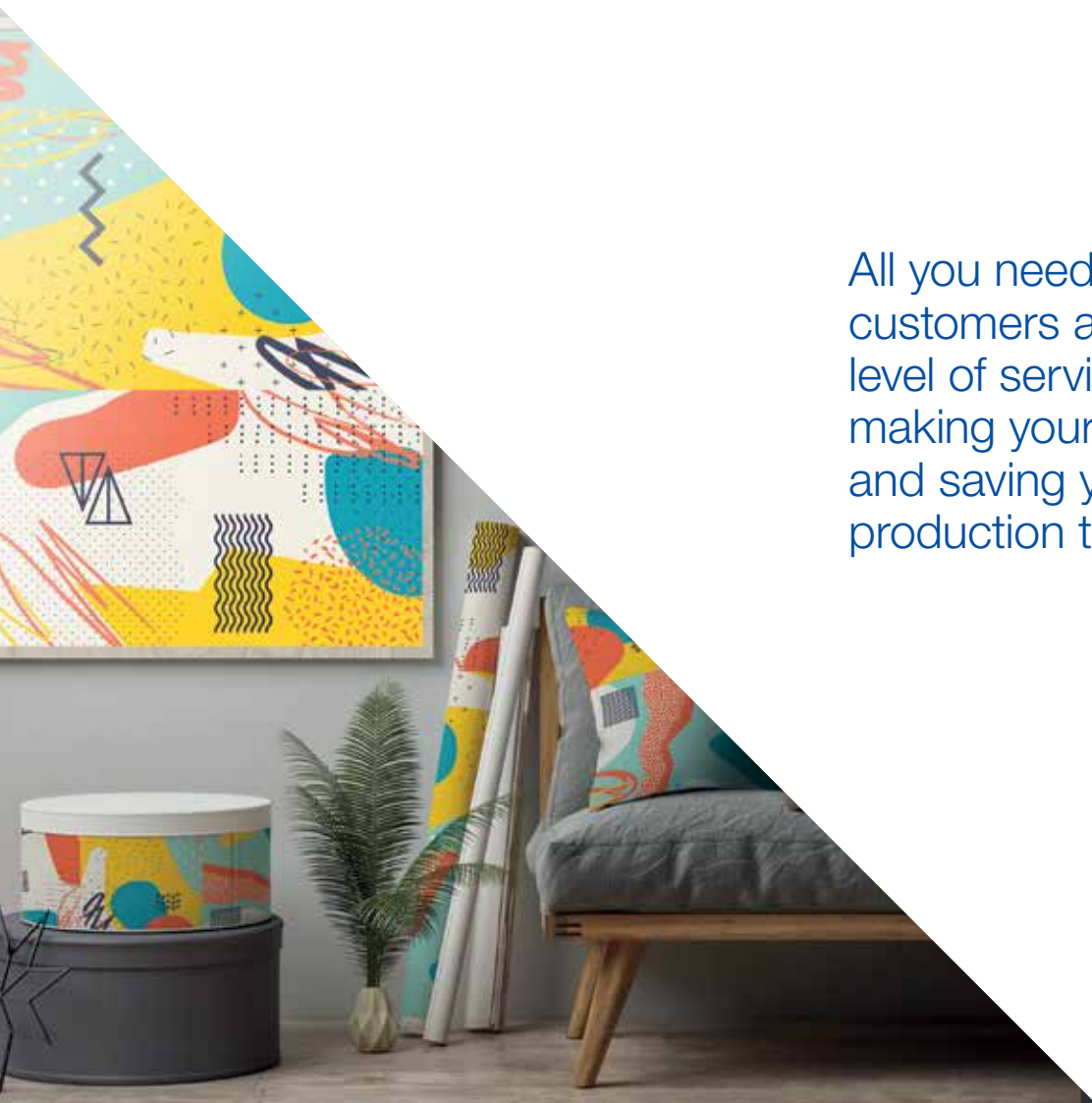
Signage and textile printing made easy

Epson Edge Print software has been designed by us to work exclusively with our combination of printer hardware and ink technologies.

Epson Edge Print software is all you need to offer your customers a greater level of service whilst making your life simpler and saving you valuable production time. It opens up new opportunities for your business, as you can easily print on a variety of medias, allowing you to consider venturing into new services for high-quality large format signage and textile prints and, ultimately, offer your customers more choice.

With the addition of the integrated Epson Edge Dashboard, you can download over 250 media profiles, free of charge, ensuring you can provide the optimal printer settings to your workflow and produce the most colour accurate prints for your customers.

Powerful and feature-rich, Epson Edge Print software is easy-to-use and provides a simplified print-ready solution to get your business up and running quickly, increasing your productivity and speeding-up print production techniques.



All you need to offer your customers a greater level of service whilst making your life simpler and saving you valuable production time.

Unleash the profitability of your printers

Accurate colour matching

Match target colours with accuracy by leveraging your printer's high colour gamut for amazing colour reproduction. This is particularly important when printing brand logos on advertising posters and other signage. It's also easy to replace colours and apply profiles for the most popular media in just a few steps – up to 250 media profiles are available to download for free.

Smart nesting to reduce media usage and waste

Epson Edge Print software enables you to maximise your media dimensions and minimise wastage through intelligent planning or smart nesting. Giving you one-click media savings.

Job label printing for better visibility on orders

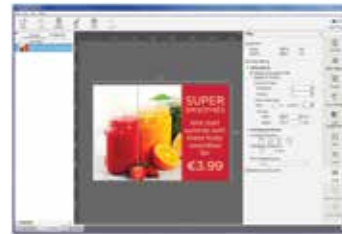
Keep track of every job by adding key information to print outs. With everything from file, printer and media names, to start dates and settings, you can easily reference orders.

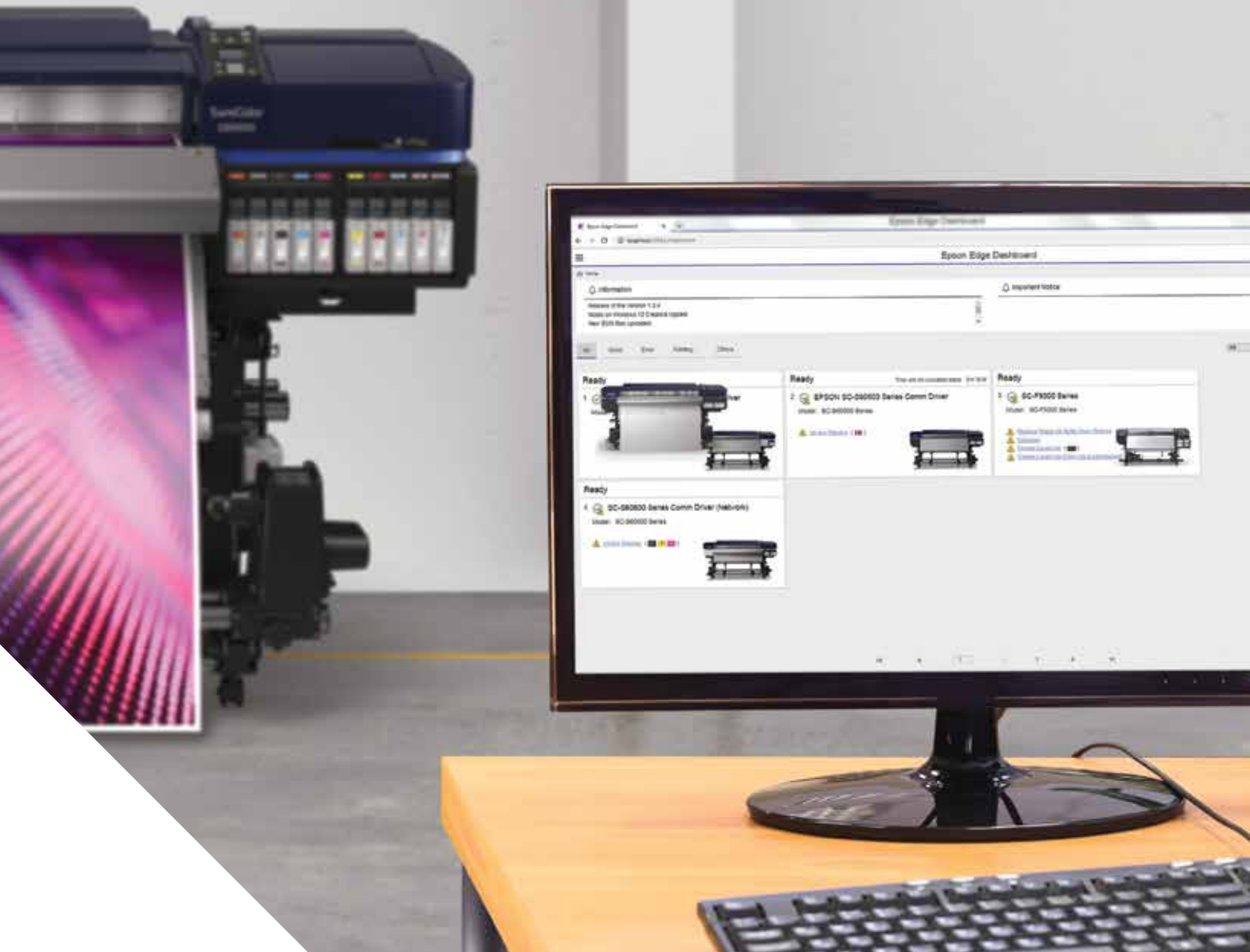
Cut line options

Epson Edge Print software allows for a variety of crop marks (frame line, tomo or western styles), or you can simply choose to go without.

Multi-layer printing for accurate white and silver reproduction

Easy multi-layer printing allows you to accurately reproduce pure white and metallic silver with precision on the SureColor SC-S80600/SC-S80610 – even when they're not in the data files – to help increase turnaround times.





Epson Edge Dashboard

Epson Edge Print software integrates with Epson Edge Dashboard. With its intuitive, user-friendly interface, it's easy to manage up to ten printers from any device to optimise productivity and reduce waste.

Epson LFP Accounting tool²

The LFP Accounting tool measures media and ink costs, so you understand the exact print and production costs for each job. This can help to maintain competitive pricing and boost your productivity.

Make full use of Epson expertise to optimise your production

Contact your Epson reseller to find out how Epson Edge Print software can deliver impressive results for your expanding business.



Committed to corporate and social responsibility

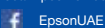
Epson is committed to developing environmentally conscious products, which means that sustainability is considered from conception to completion. We help customers recognise the environmental gains brought on by technology, whether it is redefining manufacturing through innovative robotics, saving energy with our office printing technology or revolutionising textile printing with digital solutions.

We are committed to all 17 United Nations' sustainable development goals and to the aims of the circular economy. We offer sustainable innovations because we recognise that the choices we make as organisations, individuals or a society will be essential to our shared success.

¹ SureColor SC-F6200/F7200/F9300
² SureColor SC-S Series and SC-F9300 only

For further information please contact your local Epson office or visit www.epson-middleeast.com

Epson Middle East
P.O. Box 371567, Dubai
United Arab Emirates
Telephone: +9714 2677638
www.epson-middleeast.com



Trademarks and registered trademarks are the property of Seiko Epson Corporation or their respective owners. Product information is subject to change without prior notice.