

The Epson SureColor SC-S70610 is Epson's first 64-inch (162.6cm) printer to support white and metallic ink simultaneously, enabling creative print makers, specialist sign makers and professional display printers to expand their service portfolios and produce high-quality, creative, indoor and outdoor signage, quickly and with minimal environmental impact.



Orange vibrancy



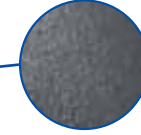
Metallic silver lips



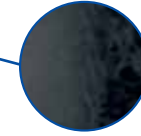
SureColor SC-S70610



Smooth transitions



Neutral greyscales



Competitors



# 1

## HIGH-QUALITY

- **10 Colour printing** supporting both white and metallic silver inks, (8 colour model available) offering the widest achievable colour range in the SureColor line-up.
- **True photo-quality prints** using orange, light black, light cyan and light magenta. Light inks provide smooth tonal graduations and transitions, light black ink enhances greyscale printing.
- **New UltraChrome white and metallic GSX inks** add versatility, flexibility and high-end quality.
- **Proven Micro Piezo® TFP print head technology** print resolutions up to 1440×1440dpi offers smooth colour blends and fine detailing. Epson TFP printhead for precise droplet formation and long production life.

# 2

## VERSATILE

- **Prints** on a wide range of materials, including transparent films and canvas substrates.
- **White and metallic silver inks** increase the scope for output giving customers new business opportunities from simple signage to high-end displays and décor.

# 3

## PRODUCTIVE

- **Dramatically faster** print speeds with white and metallic inks than competitor products - the SC-S70610 prints at up to 26.8m<sup>2</sup>/hour (high-speed mode) and achieves speeds of up to 4.0m<sup>2</sup>/hour when using metallic ink.
- **Easy-to-operate** thanks to a jack system at the rear, loading a new roll is a one-person job. The media loading lever can be accessed from both the front and back of the printer, and users can make feed adjustments during printing without stopping and re-starting, minimising downtime and reducing wastage.

# 4

## ECO-FRIENDLY

- **UltraChrome GSX inks** are odourless and nickel-free, and require no special ventilation.
- **Low energy consumption** (ENERGY STAR- qualified) – No dedicated electrical supply required, allows for simple installation into any room to commence printing.



PRODUCT SPECIFICATIONS

MODEL	SureColor SC-S70610 (8 colour)	SureColor SC-S70610 (10 colour)
TECHNOLOGY Printing technology Print resolution	Micro Piezo TFP Print Head 1440 x 1440dpi	
INK SYSTEM Colour	Epson UltraChrome GSX Cyan, Magenta, Yellow, Black, Light Black, Light Cyan, Light Magenta, Orange	
PRINT SPEED	Up to 26.8m <sup>2</sup> /hr (high-speed mode) and 18.2m <sup>2</sup> /hr (production mode)	Up to 26.8m <sup>2</sup> /hr (high-speed mode) and 18.2m <sup>2</sup> /hr (production mode) - metallic ink up to 4.0m <sup>2</sup> /hr white ink up to 3m <sup>2</sup> /h
CONNECTIVITY Ethernet TCP/IP	10/100/1000 - USB High Speed 2.0 / 1.1	
PAPER HANDLING Print margins roll media Roll dimensions	60 x 80mm width: 300 to 1625.60mm	
ELECTRICAL SPECIFICATION Power consumption operating Power consumption standby Power consumption sleep	approx. 800W approx. 580W (heater off) 12W	
DIMENSIONS (W x D x H)	2620 x 1259 x 1311mm	
WEIGHT	229kg	
NOISE LEVEL	59dB	
DRIVER	Adobe Illustrator Plug-in Software	
SOFTWARE	XP, Vista, 64, Mac Os	
LIGHT FASTNESS	Up to 3 years*	
OPTIONS	Heavy roll media system: C12C890761 Additional print drying system: C12C890751	
WARRANTY	Standard: 1-year on site, Extended: 3 years on site	

PRODUCT LOGISTICS

MODEL	SureColor SC-S70610 (8 colour)	SureColor SC-S70610 (10 colour)
SKU CODE	C11CC20401A0	C11CC20401A1
BARCODE	8715946512709	8715946512709

SUPPLIED AS STANDARD

- Main unit
- Substrate support system
- Full set of inks
- Main power cables
- Set up guides
- Maintenance kit
- Software
- CD-ROM with PDF guides
- Waste ink bottle

INK CARTRIDGE COMPATIBILITY

700ml cartridges

- Black C13T714100
- Cyan C13T714200
- Magenta C13T714300
- Yellow C13T714400
- Light Cyan C13T714500
- Light Magenta C13T714600
- Light Black C13T714700
- Orange C13T714800

600ml cartridges

- White\*\* C13T714A00

350ml cartridges

- Metallic Silver\*\* C13T714B00

FOR THE BEST RESULTS ALWAYS USE GENUINE EPSON INK

\* Based on Epson test standards: ISO18930. Does not constitute a guarantee or warranty to the longevity of printed images. Longevity of printed images may vary depending on substrates, application and environmental conditions.  
\*\* Available with the 10 colour version only

All information correct at time of publishing

For further information please contact your local Epson office or visit [www.epson-europe.com](http://www.epson-europe.com)

Austria 0810/20 01 13 (0,07 /min.) Belgium 070/350120 (0.1735 /min.) Czech 800/142 052 Denmark 44 50 85 85 Finland 0201 552 091 France 09 74 75 04 04 (Cost of local call, operator charges may apply) Germany 01805/23 41 10 (0.14 /min. aus dem dt. Festnetz, Mobilfunkpreise abweichend. Ab 1.3.2010 Mobilfunkpreis max. 0,42 /min.) Greece 210-8099499 Hungary 06800 147 83 Ireland 01 436 7742 Italy 02-660321 10 (0.12 /min.) Luxembourg 900/43010 (0,24 /min.) Middle East +9714 8818934 Netherlands 0900-5050808 (0.05 /oproep + 0.15 /min.) Norway +47 67 11 37 00 Poland 0-0-800 4911299 (0,16 zł/min.) Portugal 707 222 111 Russia (095) 777-03-55 Slovakia 0850 111 429 South Africa (+2711) 465-9621 Spain 93 582 15 00 Sweden 0771-400135 (Mobilsamtal – 0,99 kr/min, Lokala samtal – 0,30 kr/min, Utlandssamtal – 0,89 kr/min) Switzerland 0848 448820 (4-8 cent. /min.) Turkey (0212) 3360303 United Kingdom 0871 222 6702

Trademarks and registered trademarks are the property of Seiko Epson Corporation or their respective owners. Product information is subject to change without prior notice.

