

Versatile printing  
Outstanding results  
Increased revenue



# The commercial photo printer that delivers professional results

The SureLab SL-D800 is a compact commercial photo production printer. It is designed for photo shops and professional photographers who want to print high-quality photos and offer a wider range of services.

With a low total cost of ownership and improved cost efficiency, the SL-D800 has the flexibility to produce whatever your customers want on a wide range of media, delivering outstanding results. Being able to print a wider range of media will help grow your business in an increasingly competitive market place.

The two-step roll change and improved driver UI enables you to quickly switch between media options and improves ease of use. Event photographers will benefit from the improved reaction time when using the Quick Print Mode.

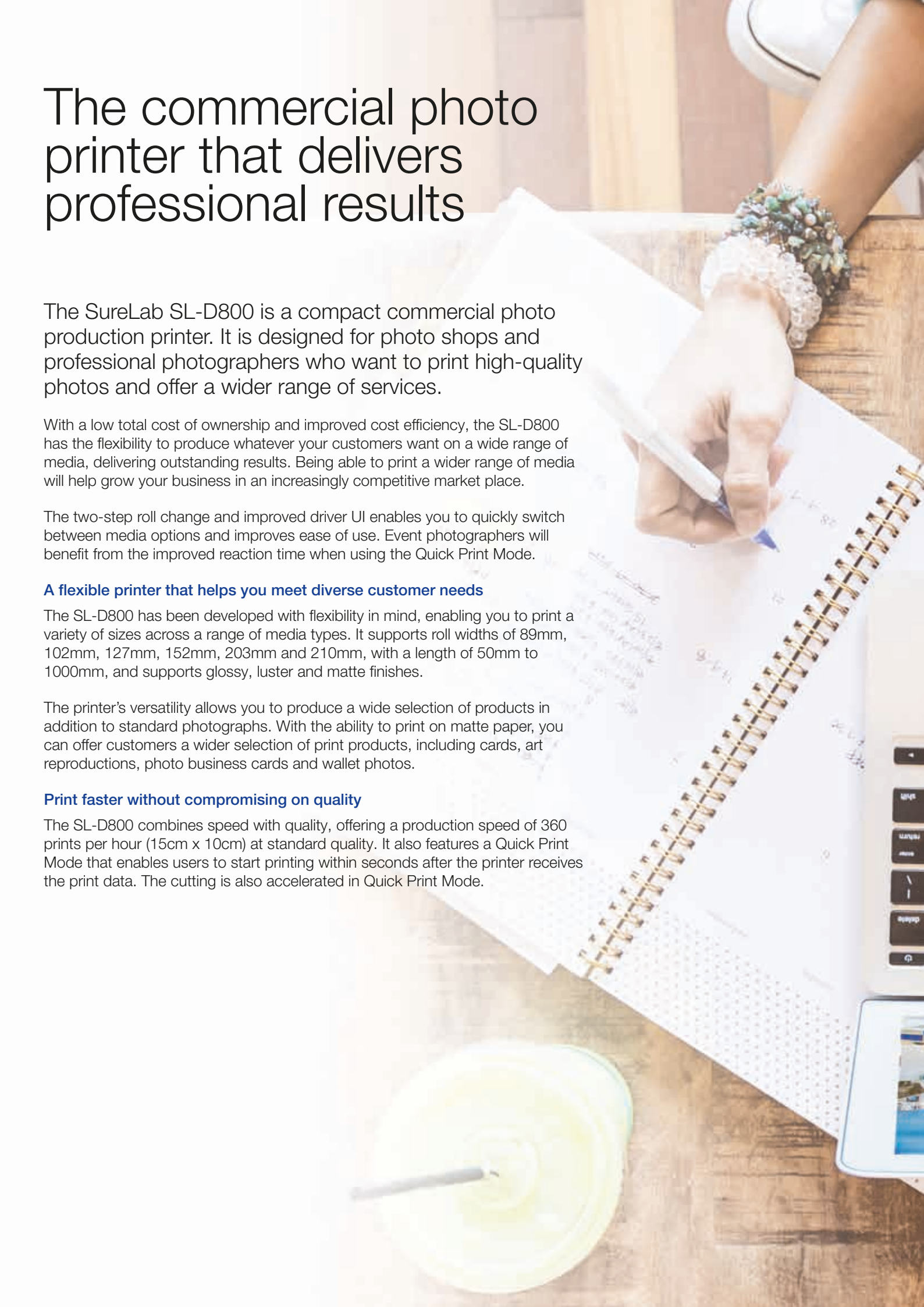
## **A flexible printer that helps you meet diverse customer needs**

The SL-D800 has been developed with flexibility in mind, enabling you to print a variety of sizes across a range of media types. It supports roll widths of 89mm, 102mm, 127mm, 152mm, 203mm and 210mm, with a length of 50mm to 1000mm, and supports glossy, luster and matte finishes.

The printer's versatility allows you to produce a wide selection of products in addition to standard photographs. With the ability to print on matte paper, you can offer customers a wider selection of print products, including cards, art reproductions, photo business cards and wallet photos.

## **Print faster without compromising on quality**

The SL-D800 combines speed with quality, offering a production speed of 360 prints per hour (15cm x 10cm) at standard quality. It also features a Quick Print Mode that enables users to start printing within seconds after the printer receives the print data. The cutting is also accelerated in Quick Print Mode.









# Reliable and cost-efficient

The SL-D800 features an improved spindle design, faster intuitive paper changing and an optional rigid print tray as well as an optional flexible tray.

It can handle a high print volume with impressive durability to ensure downtime is kept to a minimum. The printer's increased lifetime<sup>1</sup> and reduced power consumption in Ready Mode make the SL-D800 extremely cost-efficient.

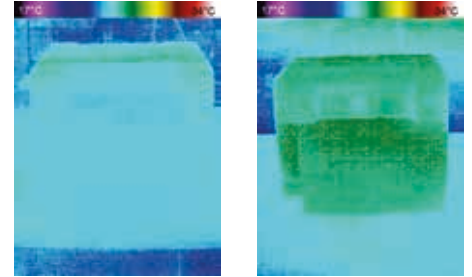
Sophisticated heater and fan management is responsible for its comparatively low power consumption in Ready Mode<sup>2</sup>, while also minimising the impact on the temperature environment i.e. in printer cabinets. In addition, the noise level is halved during standby (Ready Mode), optimising your printing environment for customers.

## Single-sided maintenance makes life easier

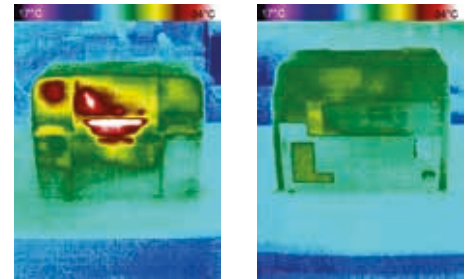
The SL-D800 offers easy routine maintenance, saving you time and resources. You only need to access one side of the printer to change the media roll, simplifying and speeding up the process.

This model also has much improved fan management: the fan slows down when the print has left the printer. As a result, the noise level is halved during standby, keeping your printing environment customer-friendly.

IR image showing heat distribution in standby



Epson SL-D800 front and back



Competitor four-colour inkjet product front and back



## A complete printing solution

A trusted print partner with an impressive heritage, Epson provides the complete solution. We offer a range of inks, papers and software; all tested to work perfectly together to help you get the most from the SL-D800 printer.

We recommend using the SureLab Pro-S Paper ranges and the SureLab Pro Paper ArtMatte media to ensure reliable, consistent printing with superior image quality, time after time.

The UltraChrome D6r-S ink system provides superior image quality, which helps finely tune the printer, extending its product life. The wide colour gamut delivers detailed images and realistic skin tones with smooth tonal gradations and deep, natural blacks with the superior gloss level of a dye-based printer. In addition, the high-quality ink has been designed with longevity in mind to protect prints from colour degradation.

## Epson Professional Media



# Flexible software that optimises your workflow

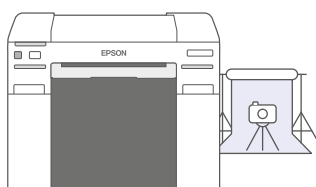
Epson's OrderController software offers great print flexibility and productivity, featuring powerful image optimisation and correction tools that produce superior results.

This easy-to-use, yet powerful order management software provides an automatic and manual service for uploading, editing, production management and control.

## One printer, many configurations to meet diverse business needs

The flexible OrderController software gives you the opportunity to expand your printing capacity as your business grows, offering a scalable system tuned to your requirements.

You can combine up to four SL-D800 printers with the software and optional additional equipment. The latest software release enables you to optimise job flows, improving productivity by running multiple jobs simultaneously.



x1

### Event Photo and Studio

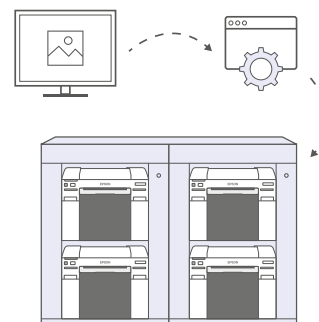
Compact and easy to transport, for high quality images on site.



x2

### Kiosk and Microlab system

Improved TCO, operation and print flexibility while keeping the same footprint per printer.



x4

### Minilab system

Improved flexibility and/or productivity.

Approx.

# 17 sec

One-off/single printing (per 10x15cm with Quick Print Mode)

Approx.

# 360 pph

(15x10cm per printer)

With 4 printers approx.

# 1440 pph

(15x10cm)



A solution for every application



Event Photo



Kiosk and Microlab system



Minilab system





<b>Model</b>	<b>SL-D800</b>
<b>Durability/printer lifetime</b>	200,000 (4" x 6") prints, or 5 years
<b>Improved roll change</b>	Easy roll media change (two steps)
<b>Media support</b>	Media width 89mm, 102mm, 127mm, 152mm, 203mm, 210mm Print length 50mm – 1000mm 65m rolls of SureLab Pro-S Paper Glossy, SureLab Pro-S Paper Luster, SureLab Pro Paper ArtMatte
<b>Power consumption</b>	120W (Operating) 60W (Ready Mode)
<b>Noise level</b>	55dB (Operating) 43dB (Ready Mode) Reduced fan speed in ready state
<b>Print Modes</b>	High Speed, Standard, High Quality, additional admin-enabled Quick Print Mode for quick-start printing plus quick paper ejection
<b>Ink</b>	Epson UltraChrome D6r-S
<b>Print speed</b>	360 prints per hour (15 x 10cm in standard quality)
<b>Printer size (W x D x H)</b>	460 x 430 x 354 mm
<b>Installation space requirement (W x D)</b>	Without tray: 520 x 460 mm With rigid tray: 520 x 670 mm

## Committed to corporate and social responsibility

Epson is committed to developing environmentally conscious products, which means that sustainability is considered from conception to completion. We help customers recognise the environmental gains brought on by technology, whether it is redefining manufacturing through innovative robotics, saving energy with our office printing technology or revolutionising textile printing with digital solutions.

We are committed to all 17 United Nations' sustainable development goals and to the aims of the circular economy. We offer sustainable innovations because we recognise that the choices we make as organisations, individuals or a society will be essential to our shared success.

The content of this publication has not been approved by the United Nations and does not reflect the views of the United Nations or its officials or Member States [www.un.org/sustainabledevelopment](http://www.un.org/sustainabledevelopment)



1 The printer has a lifetime output of 200,000 prints (4" x 6") or 5 years.  
2 Epson image of heat distribution comparison of SL-D800 vs. competitive 4-color IJ model, March 2019.

For further information please contact your local Epson office or visit [www.epson.co.za](http://www.epson.co.za)

Algeria (+2213) 770 938 617 Austria 01 253 49 78 333 Belgium +32 (0)2 792 04 47 Czech 800/142 052 Denmark 44 50 85 85 East Africa (+254) 734 354 075  
Finland 0201 552 091 France 09 74 75 04 04 (Cost of local call, operator charges may apply) Germany +49 (0) 2159/92 79 500 Greece (0030) 211 198 62 12  
Hungary 06800 147 83 Ireland 01 436 7742 Israel (+972)-3-5751833 Italy 02-660321 10 (0,12 €/min) Luxembourg +352 27860692 Middle East +9714 2677638  
Morocco (+212) 661 31 11 18 Netherlands +31 (0)20 708 5099 Norway +47 67 11 37 00 Poland 0-0-800 491 1299 (0,16 zł/min) Portugal 707 222 111  
Romania 0040 214025024 Russia (095) 777-03-55 Slovakia 0850 111 429 Southern Africa (+2711) 465-9621 Spain 93 582 15 00 Sweden 0771-400135  
(Mobilsamtal – 0,99 kr/min, Lokala samtal – 0,30 kr/min, Utlandssamtal – 0,89 kr/min) Switzerland 022 592 7923 Tunisia (+216) 9833 3571 Turkey (0212) 3360303  
United Kingdom 0871 42 37766 (+10p per minute plus network extras) West Africa (+234)8020727843

Trademarks and registered trademarks are the property of Seiko Epson Corporation or their respective owners.  
Product information is subject to change without prior notice.