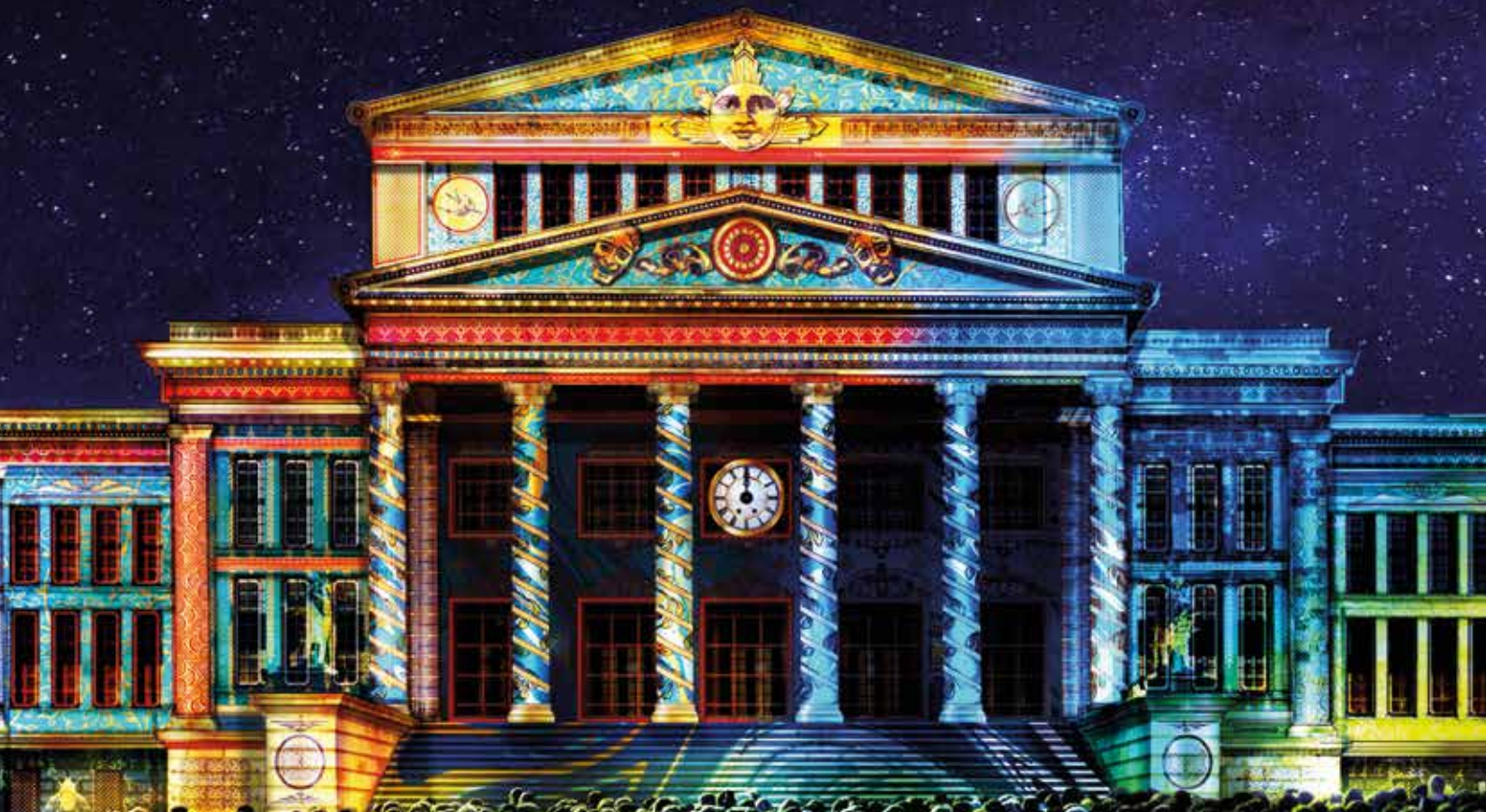


Rental and staging installation projectors

Create the ultimate
performance



EPSON[®]
EXCEED YOUR VISION

Create visual masterpieces

Epson's high-performance installation Pro AV projectors offer exceptional reliability and flexibility. Since the turn of the century we've been recognised as Worldwide No.1 projector manufacturer¹ and our meticulous research and development has led us to create some world firsts in the field of laser technology.



**EPSON
WORLD LEADER
IN PROJECTORS¹**

Thanks to their compact construction and easy installation, Epson's Pro AV projectors create visual masterpieces in auditoriums, theatres, concerts, large-scale corporate events and outdoor venues across the world, making them ideal for rental and staging applications.

Let your audience feel truly connected

There's more to a performance than what you see on stage. It's about allowing your audience to feel truly connected to the stunning visual effects; to really experience the texture, sharpness, clarity and detail. Epson's versatile range of large-screen projectors are designed to transform large performance venues with our breath-taking laser light source and 4K enhancement technology.

"We had to choose projectors that would be 100% spot on, because this projection would be watched by many people, so there could be no room for errors. Epson provided us with the best quality, flexibility and approach to our Client's needs."

Anton Hajenko, Sales Manager ATEA

Content creators: Taavi Varm <http://www.varmstudio.com/wp/>
and Erika Saaks <http://www.pult.ee/>

Quality is in our DNA

We are the first projector manufacturer to combine inorganic 3LCD panels with an inorganic phosphor wheel, achieving higher brightness and reliability with the world's brightest 3LCD laser projector². Developments such as 4K enhancement technology produce pin-sharp, high-definition images that are vital to large-scale presentations and events.

Maintenance free operation

Epson's large-screen laser projectors are tested under rigorous conditions to perform consistently for longer periods. Featuring inorganic LCD panels that produce bright, vibrant images over extremely long periods, your creativity can be extended for longer. Enjoy 20,000 hours of maintenance free projection, and with the EB-L25000U, benefit from a filter life up to 30,000 hours with fully sealed optics designed for harsh environments.

360° flexible installation

Project from any angle and onto any surface without losing image quality with our wide lens shift and 360° installation, and easily switch to portrait projection without the need to change a lamp.

Epson's edge blending technology allows you to project seamless panoramic, multi-screen images that blend edges by matching colour and brightness perfectly, even in areas that overlap. And with a range of versatile lens options, focus and lens shift functions, you can achieve superb image quality in any venue, regardless of whether your projector is ceiling or wall mounted.



Offers the brightest performance

The world's first 3LCD laser projector with 25,000 lumens² plus 4K Enhancement.

EB-L25000U

Designed for dynamic, high-impact live stage productions, the EB-L25000U is Epson's flagship laser projector, offering the best and brightest performance of the Epson L Series.

Easily transportable and quick to install, the EB-L25000U is ideal for outdoor and large venues due to its brightness capability. It comes with a high contrast ratio of 2,500,000:1, which is capable of producing absolute black and vivid colours.



Premium features

25,000 lumens of both colour and white brightness

4K quality lenses

Native WUXGA resolution with 4K Enhancement Technology

Sealed optical engine to prevent dust and smoke to prevent dust and smoke intake

3G-SDI and HDBaseT™ connectivity

Installers can choose from eight optional lenses with powered lens shift and lens memory

Brighter definition

The brightest 3LCD Laser projector in the world - 25,000lm WUXGA 3LCD projector²

3LCD technology produces bright, vivid colours

4K enhancement for projections with exceptional sharpness, clarity and detail

Installation flexibility

360° operation

Portrait mode

Compact size

Reliable operation

Inorganic phosphor wheel construction ensures reliable operation with minimal intervention

20,000 hours maintenance free laser light source

Magnesium base plate and pipe frame structure for enhanced robustness

Fully sealed internal optics prevent dust, smoke and other airborne contaminants from entering the projector – making it ideal for use in live performance and other demanding rental applications



Setting the standard for installation projection

These projectors are designed to be used at events, festivals, visitor attractions, large auditoriums, trade shows and shopping centres, as well as for corporate and educational purposes.

EB-L20000U

Epson's first model in the 20,000 lumen WUXGA installation projection sector. Offering sealed design and durable inorganic phosphor wheel technology and a laser light source for fit and forget reliability. With no lamp to replace, it comes with a five-year, 20,000-hour warranty. Its light and compact casing makes it easy and flexible to install and integrate with existing infrastructure.

EB-L12000Q

The EB-L12000Q is the industry's first 12,000-lumen native 4K 3LCD projector³ - and one of the lightest in its class. It's compatible with existing Epson 4K-quality lenses, as used on EB-L1000-Series and EB-L20000U projectors. Designed to ensure ease of installation for any orientation, the EB-L12000Q can rotate 360° without any compromise in brightness. There is also an in-built camera to allow remote diagnostics and setup.



"I choose Epson projectors because they give the production amazing new clarity. What the audience can see is very immersive."

Jeff Wayne, Composer and Producer - War of the Worlds

Ultra-bright, compact, and low-maintenance

Epson's EB-L600 series projectors are ideal for those who want to replace their existing lamp-based projectors with a compact and easy-to-maintain ultra-bright laser installation product.

EB-L615U

An entry-level 3LCD installation laser projector with WUXGA resolution, designed as a replacement for lamp-based 6,000 lumen projectors. Built for maximum uptime with outstanding durability and a five-year 12,000-hour warranty for even the most challenging installation demands.



“The reliability of the technology that I’ve suggested go into a show is very important – if you lose a projection during a show that has a massive effect on the audience”

Luke Halls, Projection Designer

Exceptional colour, small footprint, huge impact

Epson's EB-L1700 series laser projectors are built to handle the rigours of large live events. Utilising advanced technology, they deliver exceptional colour output and durability to produce incredible visual impact.



Compact and light for easy transportation and flexible positioning

Wide range of lens options

Lens memory function stores projectors' settings

360° flexible installation

Built-in camera for image calibration

Wide range of inputs including HDBaseT™, HDMI, DVI, and 3G-SDI (3G-SDI not available on the EB-L1715S)

Filter maintenance cycle typically between 20,000hrs and 30,000hrs

All models in the EB-L1700 series can take advantage of the free Epson Projector Professional Tool software, allowing you to set up multi-projector installations straight out of the box, as well as utilising advanced techniques such as projection-mapping and edge-blending.

EB-L1755U

The world's first 15,000 lumen WUXGA 3LCD laser model on the market⁴. It features new remote image capture with a built-in camera for diagnostic purposes, flexible connection options, high native contrast ratio, 360° installation and projection at any angle.

EB-L1715S

Your images and video are sure to pack a punch with this exceptionally bright 3LCD projector. Delivering 15,000 lumen SXGA+ performance, the EB-L1715S offers high reliability and almost no maintenance, while inorganic phosphor wheel technology provides superior light and heat resistance to deliver excellent reliability. Installation is possible almost anywhere without loss of brightness or distortion of image thanks to its 360° installation flexibility.

EB-L1505UH

A super bright laser projector offering brightness up to 12,000 lumens and WUXGA resolution, as well as a new remote image capture feature for diagnostic purposes, interchangeable lenses and housing colour options to suit a wider range of venues.

EB-L1495U

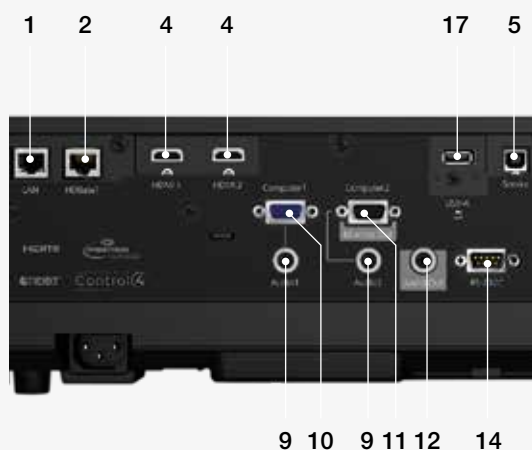
With its outstanding 9,000 lumens performance, 4K enhancement technology and WUXGA resolution, the EB-L1495U is not only perfectly suited for large-scale events, conferences and expos installations, but also for other demanding applications such as screenings and permanent installations.



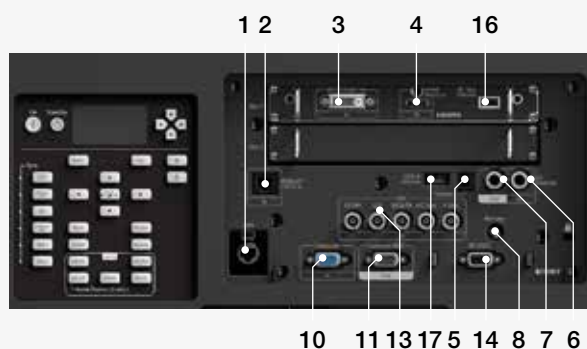
Connectivity

1. LAN port (RJ45: 100Base-TX)
2. HDBaseT™ port
3. DVI-D
4. HDMI input port (HDMI)
5. Service port
6. Monitor out SDI
7. 3G-SDI (excludes EB-L1715S)
8. Remote port (stereo mini)
9. Audio in
10. Computer input port (Mini D-Sub15-pin)
11. Monitor out port (Mini D-Sub15-pin)
12. Audio out
13. BNC input port (5BNC)
14. RS-232C port (Mini D-Sub 9-pin)
15. USB Type-B
16. DC Power Out (500mA)
17. USB Type-A
18. 1x 12G SDI and 3x 3G SDI

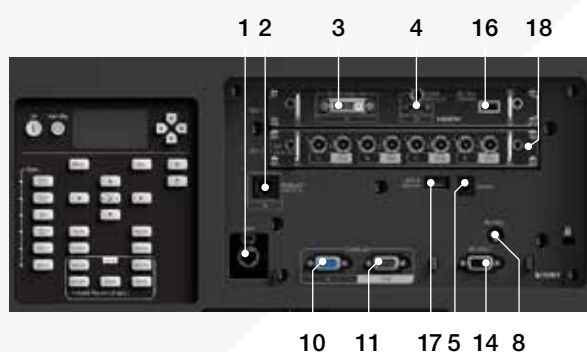
EB-L615U



EB-L20000U



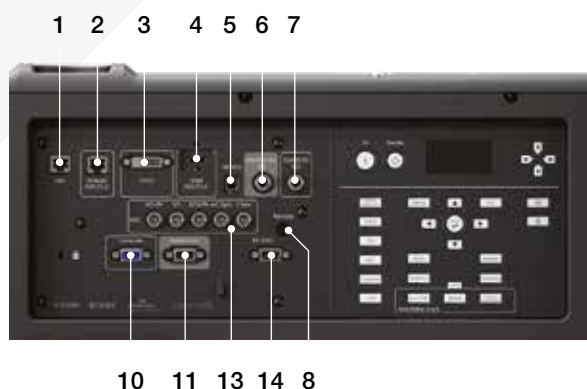
EB-L12000Q



EB-L1495U / EB-L1505UH / EB-L1755U / EB-L1715S



EB-L25000U



Lenses for every application

Introducing the Epson ELPLX02 ultra-short-throw lens designed for our ultra-high brightness EB-L1000 series projectors, plus the new EB-L20000U and EB-L12000Q. The innovative design allows you to position the projector close to the screen and makes it possible to achieve crystal clear, sharply focused images up to 1000 inches, even in confined spaces. The 0.35:1 throw ratio means you can project onto a 200-inch screen from just 1.5m away.



ELPLX02

EB-L25000U






Lens type	Rear throw	Short throw	Wide throw	Mid throw	Mid throw	Mid throw	Long throw	Long throw
Reference	ELPLR05	ELPLU05	ELPLW07	ELPLM12	ELPLM13	ELPLM14	ELPLL09	ELPLL10
Lens option								
Order number	V12H004R05	V12H004U05	V12H004W07	V12H004M0C	V12H004M0D	V12H004M0E	V12H004L09	V12H004L0A
Zoom ratio	N/A	1.21x	1.37x	1.35x	1.52x	1.50x	1.50x	1.50x
Throw ratio	0.63:1	0.90 - 1.09:1	1.29 - 1.76:1	1.74 - 2.35:1	2.28 - 3.46:1	3.41 - 5.12:1	4.79 - 7.20:1	6.96 - 10.45:1
Image size (inches)	100 - 1000	100 - 1000	100 - 1000	100 - 1000	100 - 1000	100 - 1000	100 - 1000	100 - 1000
Lens shift	V: ±15% H: ±5%	V: ±55% H: ±25%	V: ±65% H: ±30%	V: ±65% H: ±30%	V: ±65% H: ±30%	V: ±65% H: ±30%	V: ±55% H: ±25%	V: ±55% H: ±25%

EB-L1700 series / EB-L20000U / EB-L12000Q

Reference	ELPLX02*	ELPLU03S	ELPLU04	ELPLW08	ELPLW06	ELPLM15	ELPLM10	ELPLM11	ELPLL08
Lens option									
Order number	V12H004X02	V12H004UA3	V12H004U04	V12H004W08	V12H004W06	V12H004M0F	V12H004M08	V12H004M09	V12H004L08
Image size (inches)	80 - 1000	60 - 1000	60 - 1000	60 - 1000	60 - 1000	60 - 1000	60 - 1000	60 - 1000	60 - 1000
Throw	0.36:1	0.49 - 0.59:1	0.66 - 0.8:1	0.89 - 1.25:1	1.23 - 1.67:1	1.62 - 2.65:1	2.5 - 3.84:1	3.64 - 5.58:1	5.43 - 7.65:1
Shift (V/H)	SXGA+	±10% / ±5%	±16% / ±9%	±55% / ±19%	±55% / ±19%	±55% / ±19%	±55% / ±19%	±55% / ±19%	±55% / ±19%
Throw		0.35:1	0.47 - 0.57:1	0.64 - 0.78:1	0.86 - 1.20:1	1.19 - 1.62:1	1.57 - 2.56:1	2.43 - 3.71:1	3.54 - 5.41:1
Shift (V/H)	WUXGA	+25% / ±15%	±24% / ±10%	±60% / ±18%	±60% / ±18%	±60% / ±18%	±60% / ±18%	±60% / ±18%	±60% / ±18%
Throw		0.34:1	0.46 - 0.55:1	0.62 - 0.75:1	0.83 - 1.17:1	1.15 - 1.57:1	1.52 - 2.47:1	2.34 - 3.59:1	3.42 - 5.23:1
Shift (V/H)	4K	+13% / ±5%	±18% / ±6%	±58% / ±15%	±58% / ±15%	±58% / ±15%	±58% / ±15%	±58% / ±15%	±58% / ±15%

* also available in white order number: ELPLX02W

Specifications

Model	EB-L615U	EB-L1495U	EB-L1505UH	EB-L1715S	EB-L1755U
					
Resolution	WUXGA (1920 × 1200)	WUXGA (1920 × 1200)	WUXGA (1920 × 1200)	SXGA+ (1400 × 1050)	WUXGA (1920 × 1200)
Native aspect	16:10	16:10	16:10	4:3	16:10
Colour Light Output (lumens) normal / eco	6,000 / 4,200	9,000 / 6,300	12,000 / 8,400	15,000 / 10,500	15,000 / 10,500
Contrast ratio	> 2,500,000:1	> 2,500,000:1	> 2,500,000:1	> 2,500,000:1	> 2,500,000:1
Light source life (hours) normal / eco	20,000 / 30,000	20,000 / 30,000	20,000 / 30,000	20,000 / 30,000	20,000 / 30,000
Throw ratio in native aspect	1.35 - 2.20:1	1.57 - 2.56:1	1.57 - 2.56:1	1.62 - 2.65:1	1.57 - 2.56:1
Scalable image size (diagonal)	50 - 500"	60 - 1,000"	60 - 1,000"	60 - 1,000"	60 - 1,000"
Zoom	Optical x1.6	Optical x1.6	Optical x1.6	Optical x1.6	Optical x1.6
Vertical keystone	Manual ±30°	Manual ±45°	Manual ±45°	Manual ±45°	Manual ±45°
Horizontal keystone	Manual ±30°	Manual ±30°	Manual ±30°	Manual ±30°	Manual ±30°
Lens shift	± 50% Vertical ± 20% Horizontal	± 60% Vertical ± 18% Horizontal	± 60% Vertical ± 18% Horizontal	± 55% Vertical ± 19% Horizontal	± 60% Vertical ± 18% Horizontal
Speaker output	10W	N/A	N/A	N/A	N/A
Connectivity	USB 2.0 Type A, USB 2.0 Type B, RS-232C, VGA in (2x), VGA out, HDMI in (2x), HDBaseT, Miracast	HDBaseT, BNC in, HDMI in, DVI in, VGA out, VGA in, RS-232C, HD-SDI	HDBaseT, BNC in, HDMI in, DVI in, VGA out, VGA in, RS-232C, HD-SDI	HDBaseT, BNC in, HDMI in, DVI in, VGA out, VGA in, RS-232C	HDBaseT, BNC in, HDMI in, DVI in, VGA out, VGA in, RS-232C, HD-SDI
Audio connectivity	Stereo mini in x2, Stereo mini out	Stereo mini in x3, Stereo mini out	Stereo mini in x3, Stereo mini out	Stereo mini in x3, Stereo mini out	Stereo mini in x3, Stereo mini out
Networking	LAN (RJ45) and wireless LAN	LAN (RJ45) and optional wireless LAN unit	LAN (RJ45) and optional wireless LAN unit	LAN (RJ45) and optional wireless LAN unit	LAN (RJ45) and optional wireless LAN unit
Epson software solutions	Epson Projector Management, Epson Projector Content Manager, Epson iProjection, Web control	Epson Projector Professional Tool, Epson Projector Management, Epson iProjection, Web control	Epson Projector Professional Tool, Epson Projector Management, Epson iProjection, Web control	Epson Projector Professional Tool, Epson Projector Management, Epson iProjection, Web control	Epson Projector Professional Tool, Epson Projector Management, Epson iProjection, Web control
Other features	Home Screen, A/V mute, Split screen, Auto power on, Auto source search, Quick corner, Quick startup	Lens Memory, Integrated camera for colour calibration and diagnostic image capture, 4K enhancement, 360° installation, Edge blending, Portrait projection	Lens Memory, Integrated camera for colour calibration and diagnostic image capture, 4K enhancement, 360° installation, Edge blending, Portrait projection	Lens Memory, Integrated camera for colour calibration and diagnostic image capture, 360° installation, Edge blending, Portrait projection	Lens Memory, Integrated camera for colour calibration and diagnostic image capture, 4K enhancement, 360° installation, Edge blending, Portrait projection
Noise (dB) normal / eco	38 / 27	37 / 30	37 / 30	40 / 32	40 / 32
Weight (kg)	8.5	21.9	21.9	22.3	22.3
Dimensions exc. feet (W × D × H mm)	440 × 304 × 120	586 × 492 × 211	586 × 492 × 211	586 × 492 × 211	586 × 492 × 211
Power consumption normal / eco	353W / 265W	626W / 512W	908W / 597W	1,024W / 647W	1,024W / 647W
Power consumption standby, comm. off	0.3W	0.33W	0.33W	0.30W	0.30W

EB-L12000Q**EB-L20000U****EB-L25000U**

Native 4K (3840 × 2160) 16:9	WUXGA (1920 × 1200) 16:10	WUXGA (1920 × 1200) 16:10
12,000 / 8,400	20,000 / 14,000	25,000 / 17,500
> 2,500,000:1	> 2,500,000:1	> 2,500,000:1
20,000 / 30,000	20,000 / 30,000	20,000 / 30,000
1.52 - 2.47:1	1.62 - 2.65:1	1.74 - 2.35:1
60 - 1,000"	60 - 1,000"	100 - 1,000"
Optical x1.6 Manual ±45° Manual ±30°	Optical x1.6 Manual ±45° Manual ±30°	Optical x1.4 Manual ±45° Manual ±30°
± 58% Vertical ± 16% Horizontal N/A	± 60% Vertical ± 18% Horizontal N/A	± 65% Vertical ± 30% Horizontal N/A
HDBaseT, DVI in, VGA out, VGA in, RS-232C, USB 2.0 Type B (Service Only), HDMI (HDCP 2.2), Display Port (optional), 12G-SDI, Quad Link SDI, USB Type A	HDBaseT, BNC in, DVI in, VGA out, VGA in, RS-232C, USB 2.0 Type B (Service Only), HDMI (HDCP 2.2), 3G-SDI Input, 3G SDI monitor output, USB Type A	VGA in, VGA out, DVI in, BNC in, HDBaseT, HD-SDI, HDMI (HDCP 2.2)
N/A	N/A	N/A
LAN (RJ45) and wireless LAN	LAN (RJ45) and wireless LAN	LAN (RJ45) and optional wireless LAN unit
Epson Projector Professional Tool, Epson Projector Management, Epson iProjection	Epson Projector Professional Tool, Epson Projector Management, Epson iProjection	Epson Projector Professional Tool, Epson Projector Management, Epson iProjection
Lens Memory, Integrated camera for colour calibration and assisted blending, 360° installation, Edge blending, Portrait projection	Lens Memory, Integrated camera for colour calibration and assisted blending, 360° installation, Edge blending, Portrait projection	Lens Memory, Integrated camera for colour calibration, 4K enhancement, 360° installation, Edge blending, Portrait projection
45 / 38	45 / 38	49 / 40
51.4	49.6	66.6
620 × 790 × 358	620 × 790 × 358	790 × 710 × 299
1,741W / 1,030W	1,860W / 1,123W	2,500W / 1,850W
0.5W	0.5W	0.39W



Committed to corporate and social responsibility

Epson is committed to developing environmentally conscious products, which means that sustainability is considered from conception to completion. We help customers recognise the environmental gains brought on by technology, whether it is redefining manufacturing through innovative robotics, saving energy with our office printing technology or revolutionising textile printing with digital solutions.

We are committed to all 17 United Nations' sustainable development goals and to the aims of the circular economy. We offer sustainable innovations because we recognise that the choices we make as organisations, individuals or a society will be essential to our shared success.

The content of this publication has not been approved by the United Nations and does not reflect the views of the United Nations or its officials or Member States www.un.org/sustainabledevelopment



- 1 Survey conducted by Futuresource Consulting Limited for the period from 2001 to 2019.
- 2 Brightest 3LCD projector as of September 2018. Some short-throw and ultra-long-throw lenses will not produce 25,000lm
- 3 As of October 2018
- 4 As of October 2018

For further information please contact your local Epson office or visit www.epson-middleeast.com

Epson Middle East
P.O. Box 371567, Dubai
United Arab Emirates
Telephone: +9714 2677638
www.epson-middleeast.com



Trademarks and registered trademarks are the property of Seiko Epson Corporation or their respective owners. Product information is subject to change without prior notice.