

Expression 12000XL and 12000XL Pro

Precision scanning Detailed results



Official Team Partner

EPSON
EXCEED YOUR VISION



AMG
PETRONAS
MOTORSPORT

EPSON[®]
EXCEED YOUR VISION

Precision scanning made simple

Capture detailed images at high resolutions, reproduce the detail of a document with the highest accuracy and precisely manipulate images for the sharpest results.

The Expression 12000XL and 12000XL Pro are high-quality A3 scanners designed for applications that demand high precision. The scanner makes it simple to precisely capture media up to A3+ in size and ensure crisp images and professional results every time. The range is ideal for accurately capturing detailed images, including historic records, X-rays¹, film negatives, architectural plans, forensic evidence and artefacts. It's also flexible, easy to use and has low power consumption.

High-quality image reproduction

A resolution of 2400 x 4800 dpi, an optical density of 3.8 Dmax and 48-bit colour depth allow you to easily and consistently achieve scans with superior tones and colour reproduction. To eliminate image 'ghosting', the CCD sensor is covered with anti-reflection coated glass, while Epson's Micro Step Drive™ technology moves the optical carriage with ultra-high precision to produce greater detail.

Clearer, sharper scans

A 6-line CCD sensor array with large pixels provides greater scanning details during every pass. An Auto Focus system can achieve pinpoint focusing automatically for enhanced image clarity and accuracy, or you can take full creative control using the Manual Focus option.

Versatile film scanning

With the Expression 12000XL Pro you can capture transparent and clear media in unrivalled levels of detail. The unit supports a wide range of film formats right up to A3+ size. Additionally the scanner is supplied with holders for 35mm strip film, 35mm mounted film, 6 x 18cm medium format film and 4" x 5" large format film. The transparency unit is available as an option to the standard Expression 12000XL.

ReadyScan LED Technology

The Expression 12000XL is equipped with ReadyScan LED, an energy-saving and eco friendly light source that requires zero warm-up time, providing hyper-responsive scanning. The device's two lamp design includes bright white for positive transparency scanning; a blue light is used for negative transparencies. In post production this reduces processing time in the conversion of the final image.



Powerful software included

The 12000XL and 12000XL Pro include professional image enhancement software. Epson Scan 2 software offers advanced imaging features, including colour restoration, dust removal and grain reduction. LaserSoft SilverFast Ai 8.8 brings you further easy-to-use image processing capabilities, including professional standard dust and grain reduction, noise elimination and automatic IT8 colour calibration. When in professional mode you can use advanced features such as Histogram, Image Adjustment, Tone Correction, Colour Palette to fine tune your settings before proceeding with your scan.



Backlight Correction

Adjust the brightness of the images which are darkened due to backlighting.



Before



After

Colour Restoration

Restores colours of faded photos and film.



Before



After

Dust Removal

Use software-based detection to reduce dust and scratches from your film & photo scans.



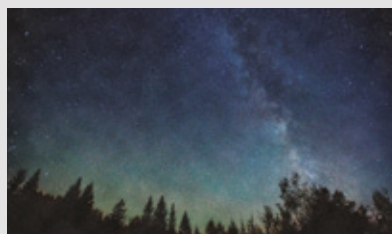
Before



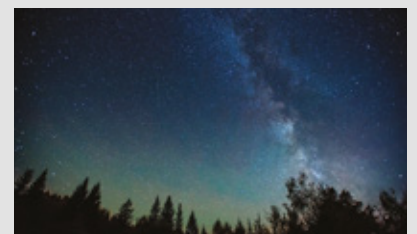
After

Grain Reduction

Reduces film grain in the output images for film scanning.



Before

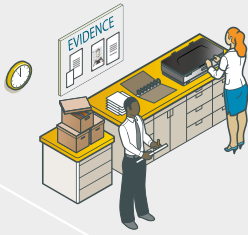


After

Efficient, eco-friendly operation

Using an energy-saving ReadyScan LED light source that requires zero warm-up time and a power-saving sleep mode, energy consumption is further reduced.

Applications



Legal and public sector

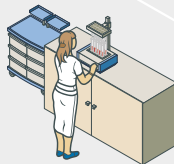
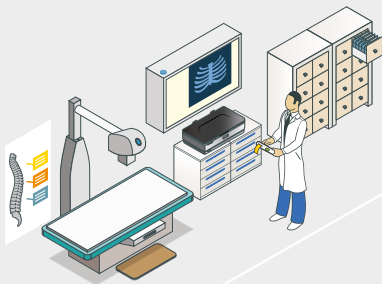
Scan sensitive data

Capture every detail of photographs, transparencies, architectural plans and even fingerprints for forensic analysis. The high quality documents can then be used in case sensitive situations, where accuracy is of paramount importance.

Healthcare

Every detail – captured in confidence

Using the latest software, capture photographs, negatives and x-rays in high resolution detail, and to international standards such as DICOM¹.



Education and attractions

Research and review with ease

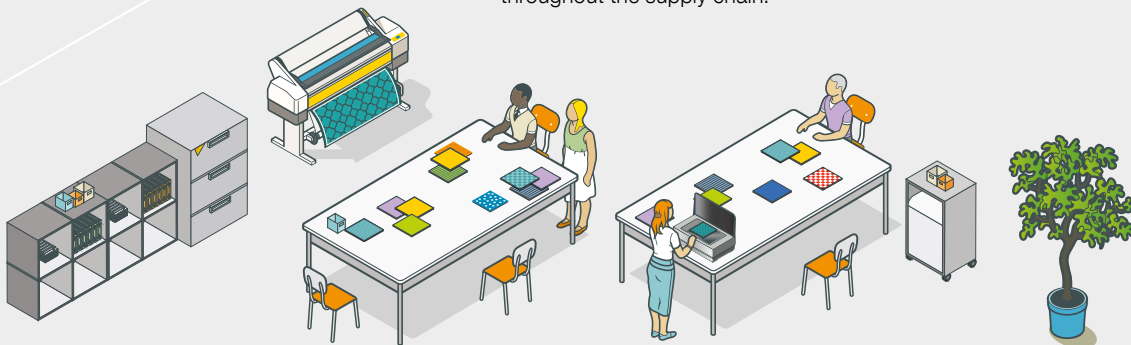
Enable students to capture research materials for fine art and graphic design projects to construction plans and newspaper cuttings. Preserve historic documents at the highest detail for museums.



Design and manufacturing

Colour consistency and quality controlled

Scan swatches and samples to gain approvals at concept stages, use high quality software tools to ensure QC standards are maintained throughout the supply chain.



1. Additional software required at extra cost