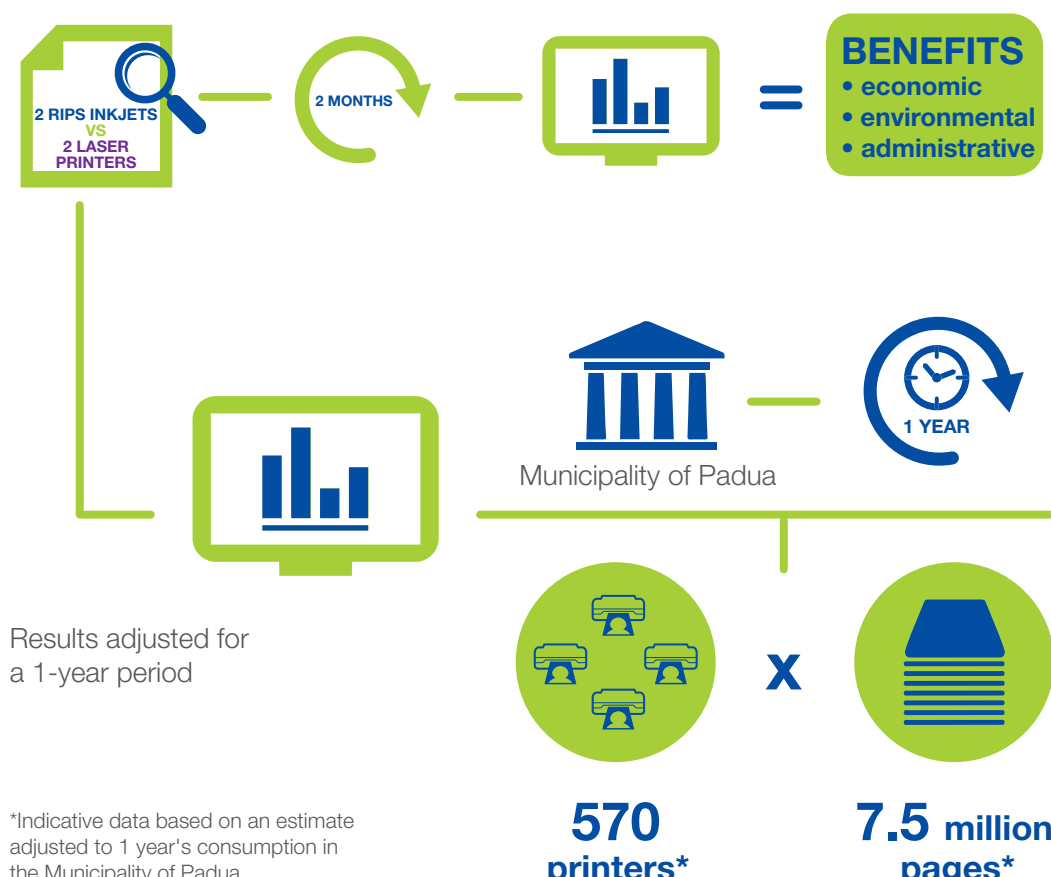


## Epson WorkForce Pro RIPS

# THE ECONOMIC, ADMINISTRATIVE AND ENVIRONMENTAL BENEFITS OF RIPS INKJET TECHNOLOGY

The experimental study, conducted for two months at the Municipal Police and Civil Protection Sector of the Municipality of Padua, compared the multifunction Epson WorkForce Pro RIPS (Replaceable Ink Pack System) with

the traditional laser printers present on site. The study analysed a wide range of parameters, which revealed the economic, administrative and environmental benefits deriving from the use of the RIPS inkjet technology.



## Epson WorkForce Pro RIPS

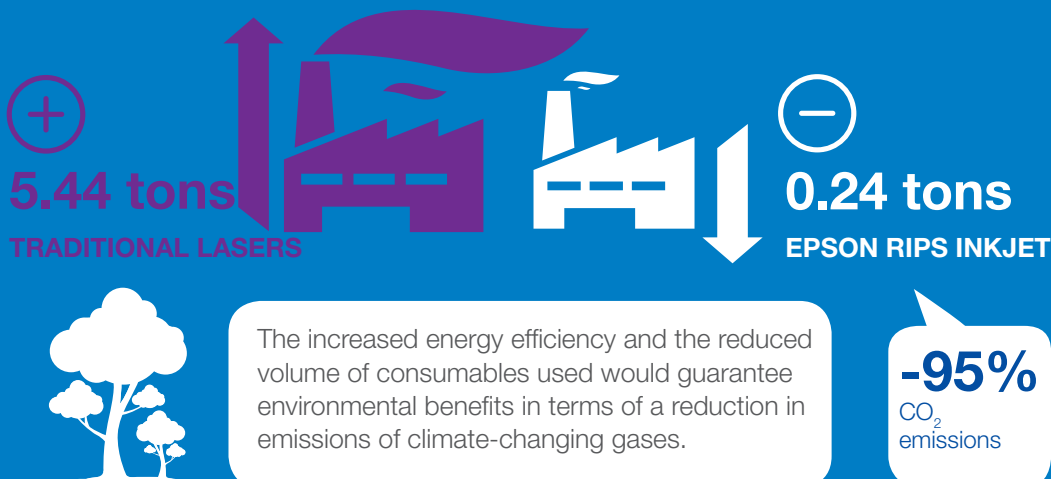
### WASTE REDUCTION



The use of Epson WorkForce Pro RIPS printers would guarantee a consistent reduction of waste associated with the use of consumables.

## Epson WorkForce Pro RIPS

### REDUCTION IN CO<sub>2</sub> EMISSIONS



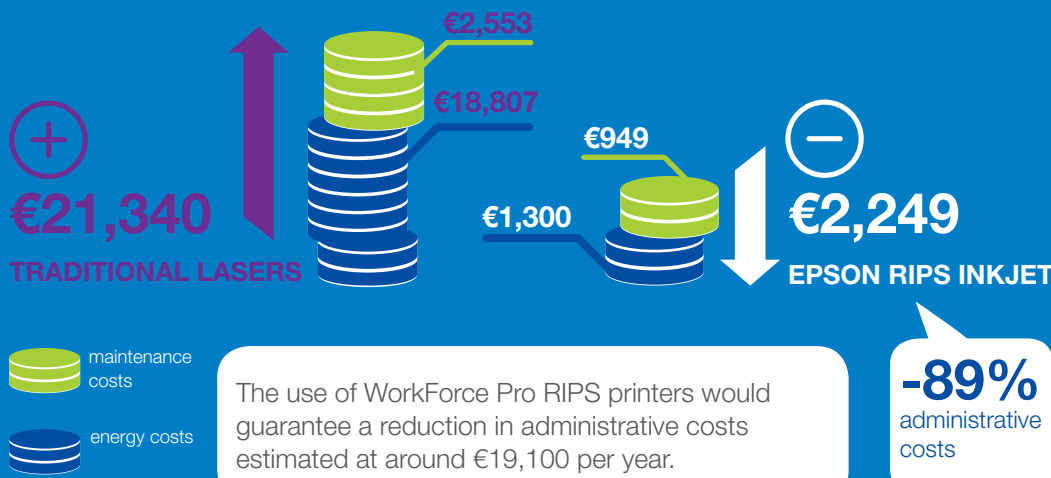
## Epson WorkForce Pro RIPS

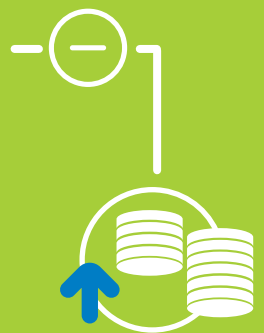
### LESS CLUTTER



## Epson WorkForce Pro RIPS

### SAVINGS ON ADMINISTRATIVE COSTS





**REDUCES COSTS AND IS ENVIRONMENTALLY FRIENDLY**

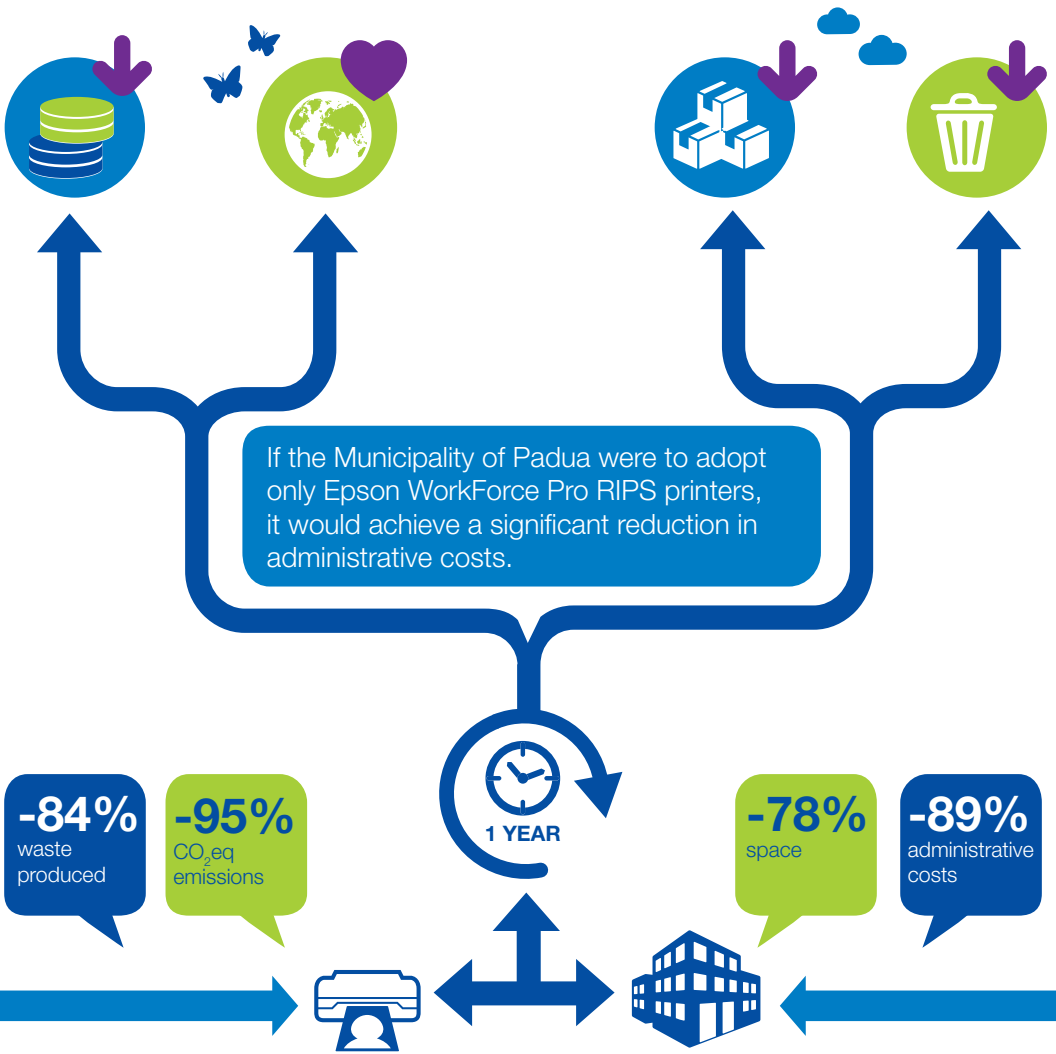
**Epson WorkForce Pro RIPS**

**Epson WorkForce Pro RIPS**

**EPSON RIPS INKJET SCENARIO**

The “Epson RIPS Inkjet” scenario is based on replacing the printers in all of the Municipality's offices with Epson WorkForce Pro RIPS, to enable

an assessment of the environmental and administrative benefits of a year of printers for the entire Organisation.



**Epson WorkForce Pro RIPS**

**THE WORKFORCE PRO RIPS RANGE**

**WF-R5190DTW**



- Up to 75,000 pages per black and white ink bag
- Up to 50,000 pages per colour ink bag
- A4 colour printer
- Prints up to 34 ppm in black and white, 30 ppm in colour (20 ppm ISO)
- Monthly printing volume up to 45,000 pages
- Standard paper capacity of 580 sheets

**WF-R5690DTWF**



- Up to 75,000 pages per black and white ink bag
- Up to 50,000 pages per colour ink bag
- A4 colour multifunction with print, scan, copy and fax functions
- Prints up to 34 ppm in black and white, 30 ppm in colour (20 ppm ISO)
- Monthly printing volume up to 45,000 pages
- Standard paper capacity of 580 sheets

**WF-R8590DTWF**



- Up to 75,000 pages per ink bag
- A3+ colour multifunction with print, scan, copy and fax functions
- Prints A4 up to 34 ppm in black and white and in colour (24 ppm ISO)
- Monthly printing volume up to 75,000 pages
- Standard paper capacity of 831 sheets

**WF-R8590D3TWFC**



- Same specifications as the WF-R8590DTWF model, plus:
- 2 additional trays of 500 sheets
  - Paper capacity of 1,831 sheets
  - Cabinet