

# Reimagine projection

High-performance home projectors



 SERIES

**EPSON®**

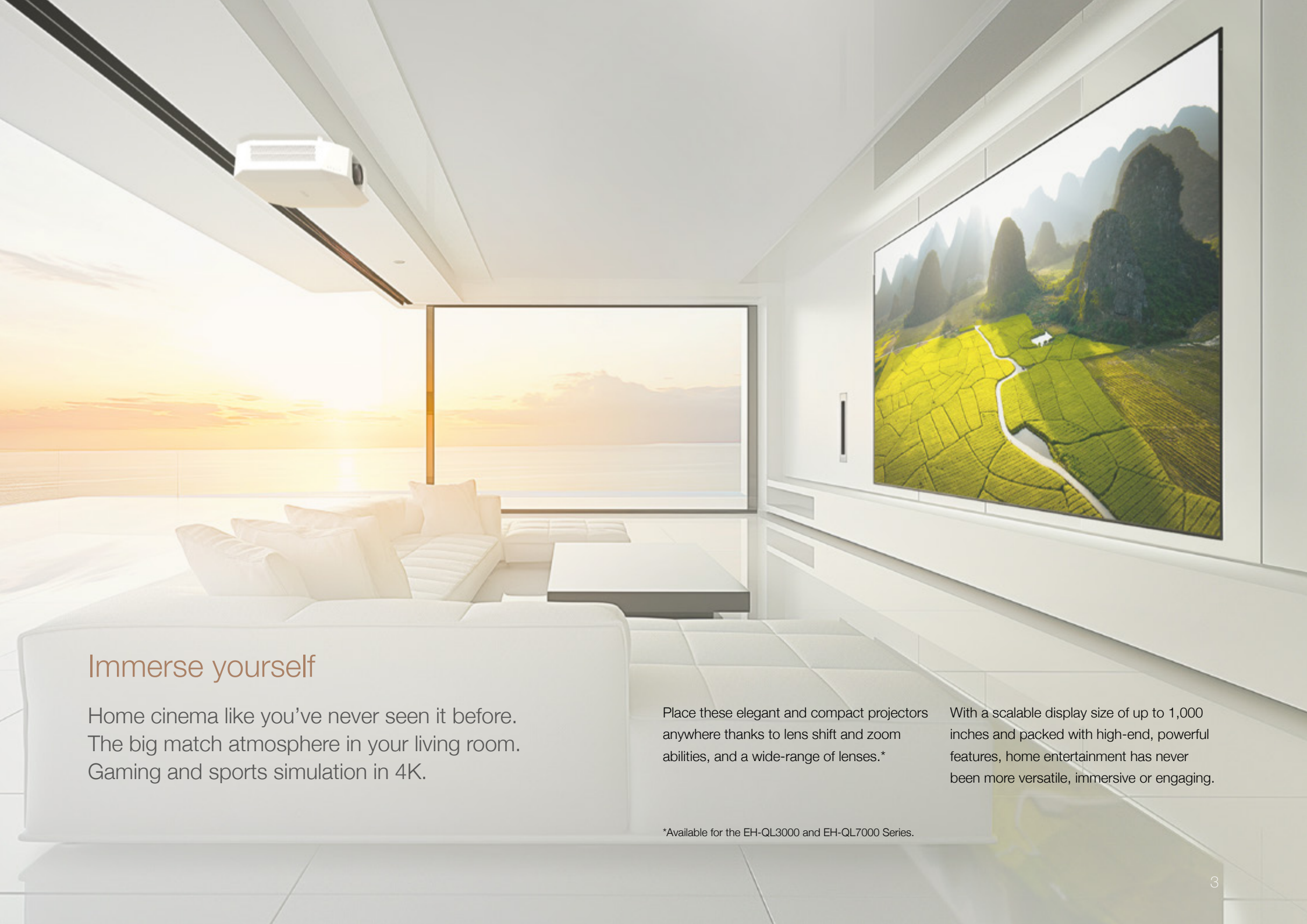


See entertainment  
in a whole new light

Now you can enjoy the big screen, big event or big game experience at home. In stunning 4K. Even in bright environments.



Introducing Epson's professional home laser projectors, made for film, entertainment and gaming enthusiasts. Delivering exceptionally bright, sharp, fast-moving images, and an incredibly high contrast ratio, all with great connectivity, easy set up and flexible placement. Designed for epic-sized projection in light living spaces, these projectors use 3LCD technology to deliver vibrant colour and true-to-life image quality.



## Immerse yourself

Home cinema like you've never seen it before.  
The big match atmosphere in your living room.  
Gaming and sports simulation in 4K.

Place these elegant and compact projectors  
anywhere thanks to lens shift and zoom  
abilities, and a wide-range of lenses.\*

With a scalable display size of up to 1,000  
inches and packed with high-end, powerful  
features, home entertainment has never  
been more versatile, immersive or engaging.

\*Available for the EH-QL3000 and EH-QL7000 Series.

# The big screen experience

Front row seats just got more comfortable



Laser optical engine generates a high colour purity light source with 3LCD.

Projection up to a massive 1,000 inches\*

4K (3,820 × 2,160)  
8.3m pixels

1.04" panel size  
that delivers a  
bright image\*

100% Colour and  
White Light Output

\*EH-QL3000 and EH-QL7000 Series.



# Unmatched brilliance

## Make any room centre stage

Thanks to 3,300, 6,000 and 10,000 lumens you no longer need a dedicated dark room or theatre to witness projection perfection.

Now, you can go lighter, brighter, bigger and bolder in any area of your home. Without compromising on image quality.



It's all in the detail



#### Advanced 4K image processing

Thanks to Epson's advanced 4K image processing chip, you can enhance any movie screening or game simulation into an enthralling experience.

#### Exquisite, crisp clarity

Dynamic tone mapping creates more realistic images by automatically adjusting the brightness frame by frame.

Plus, scene adaptive gamma correction allows you to adjust colour manually.



#### Game-changing operation

Play in 4K at 120Hz thanks to HDMI 2.1 connectivity, and enjoy smoother action with auto low-latency mode.



4K super resolution and auto contrast enhancement function as standard.



### A better view

Super resolution enhances the image and refines surface detail for true-to-life images and more comfortable viewing.

### 4K, without the blur

4K frame interpolation – means multiple new frames are inserted between the original ones, so motion appears smoother, sharper and more stable.






## Vivid colour, breathtaking depth

Powered by 3LCD laser technology to deliver high White and Colour Light Output, greater contrast and a more natural colour expression.

The result? Projectors capable of absolute black that will take your breath away, as well as smooth, dark gradations and finely-tuned, rich colours.





Exceptional colour  
contrast for richer  
blacks and vivid  
colours.





## Picture perfect

High Dynamic Range (HDR) display technology enhances contrast, brightness and colour of video content, making standard and HD content truly come alive.

Together with Dynamic Tone Mapping, it can display the best image frame by frame.

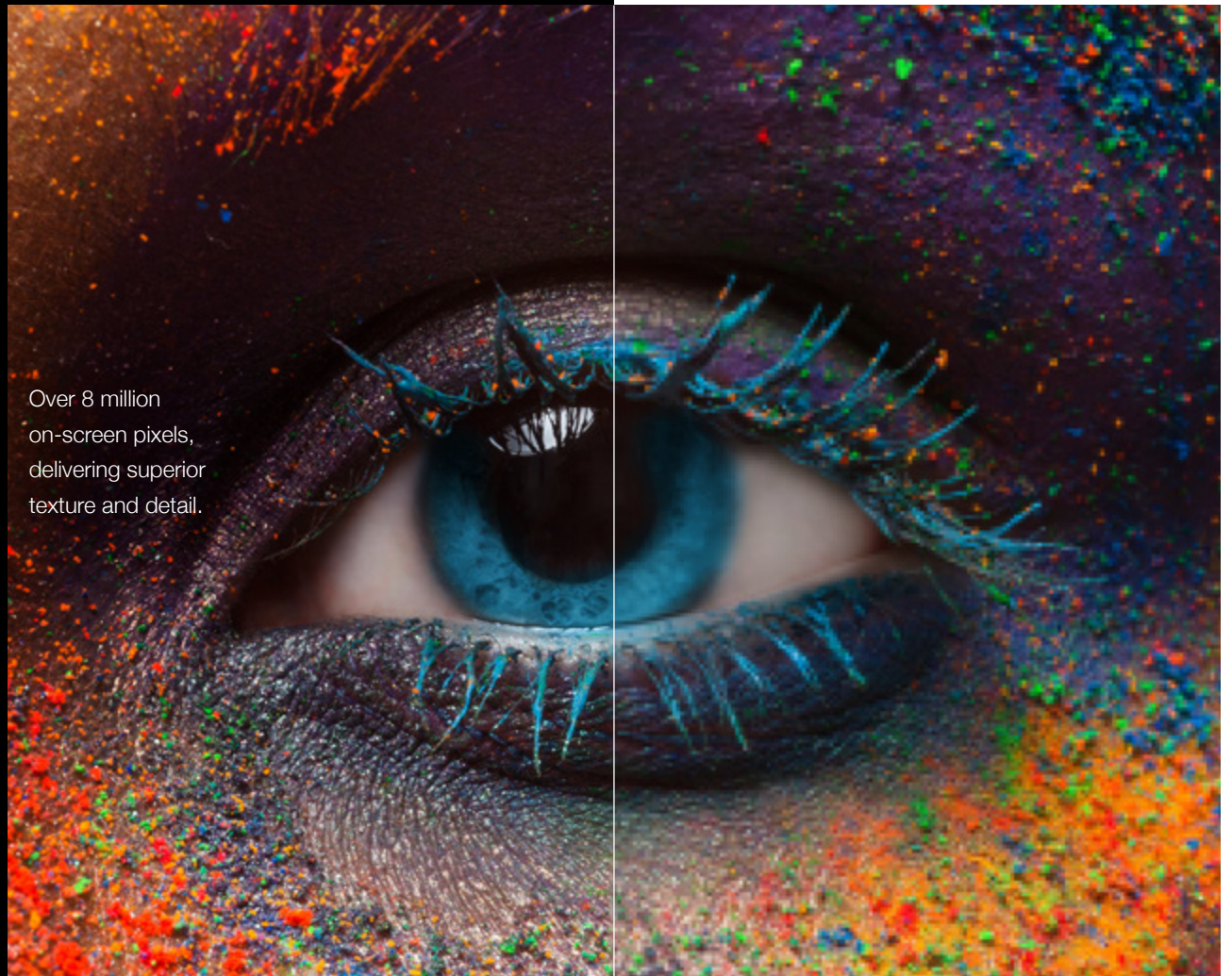


5,000,000:1 high  
contrast ratio for  
well-defined shadows  
and deep blacks.

4 colour modes

Dynamic  
Vivid  
Cinema  
Natural

Over 8 million  
on-screen pixels,  
delivering superior  
texture and detail.



# Effortless integration

Simple to set up and  
designed to blend  
seamlessly into your  
home environment

Epson's advanced projection technology enables a wide range of IP controls and motorised lens shift and interchangeable lenses, so the projectors can easily be set up wherever you require, and seamlessly fit with your existing installations.

Up to 20,000 hours of use provides virtually worry-free operation. And there's no waiting for the projector to warm-up or cool down – it reaches maximum brightness and turns off almost immediately.





Discreet installation options

Compact and lightweight

Enhanced connectivity

Motorised lens shift –  
zoom and focus

Easily swap out lenses for  
different purposes, room sizes  
and configurations\*

Preset up to 10 aspect ratios

Suppressed fan noise and  
cooling system

\*Available for the EH-QL3000 and EH-QL7000 Series.





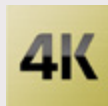
EH-QS100W / EH-QS100B  
LaserTV



EH-QS100W



EH-QS100B



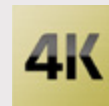
EH-QB1000W / EH-QB1000B



EH-QB1000W



EH-QB1000B



EH-QL3000W / EH-QL3000B



EH-QL3000W



EH-QL3000B



EH-QL7000W / EH-QL7000B



EH-QL7000W



EH-QL7000B

Scan for technical specifications

## Lens options

EH-QL Series only

| Model name             | Model code            | Function     |               |         | F Number |      | Zoom ratio | Throw ratio |      | Lens shift   |            | EH-QL3000 Series      |                      | EH-QL7000 Series      |                      |
|------------------------|-----------------------|--------------|---------------|---------|----------|------|------------|-------------|------|--------------|------------|-----------------------|----------------------|-----------------------|----------------------|
|                        |                       | Powered zoom | Powered focus | Lens ID | Wide     | Tele |            | Wide        | Tele | Vertical     | Horizontal | Brightness limit (lm) | Brightness limit (%) | Brightness limit (lm) | Brightness limit (%) |
| Ultra short throw lens | ELPLX02S<br>ELPLX02WS | N/A          | Yes           | Yes     | 1.9      | –    | –          | 0.34        | –    | +45%<br>~75% | ±13%       | 5,000                 | 100                  | 8,400                 | 100                  |
| Zoom lens              | ELPLW06               | Yes          | Yes           | Yes     | 1.8      | 2.3  | 1.4        | 1.15        | 1.57 | ±64%         | ±16%       | 5,700                 | 100                  | 9,500                 | 100                  |
| Zoom lens              | ELPLM08               | Yes          | Yes           | Yes     | 1.7      | 2.3  | 1.6        | 1.02        | 1.64 | ±25%         | ±8%        | 5,700                 | 100                  | 9,600                 | 100                  |
| Zoom lens              | ELPLM15               | Yes          | Yes           | Yes     | 1.8      | 2.3  | 1.6        | 1.52        | 2.47 | ±64%         | ±16%       | 6,000                 | 100                  | 10,000                | 100                  |
| Zoom lens              | ELPLM10               | Yes          | Yes           | Yes     | 1.8      | 2.4  | 1.5        | 2.34        | 3.59 | ±64%         | ±16%       | 5,900                 | 100                  | 9,900                 | 100                  |

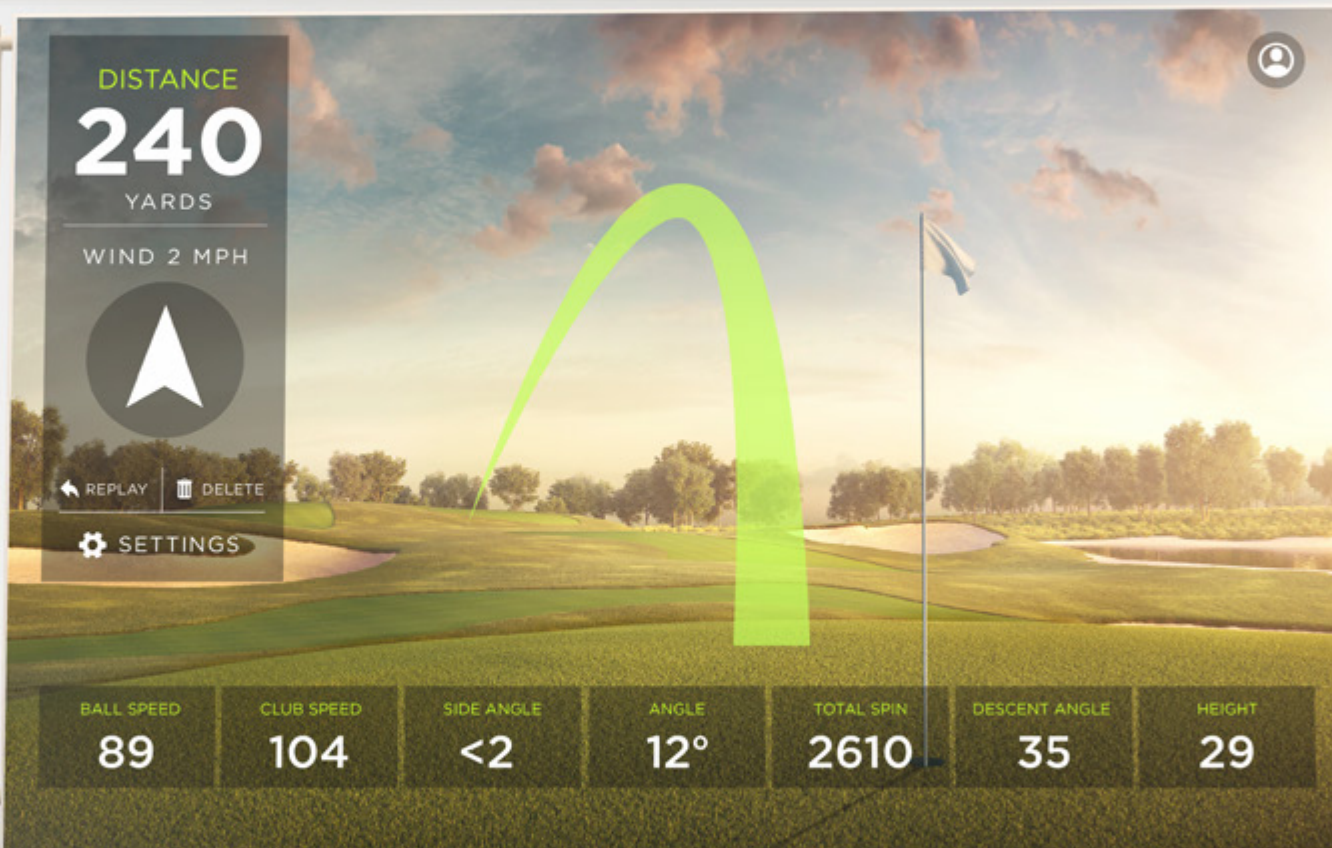
## Cover options

EH-QL Series only

| Option                     | Option code |
|----------------------------|-------------|
| Vanity board – Champagne   | ELPVB05     |
| UST lens cover – White     | ELPVB02W    |
| UST lens cover – Black     | ELPVB03B    |
| UST lens cover – Champagne | ELPVB04C    |







Please recycle responsibly

This projector series is designed for versatile use, with key features including high brightness and flexible placement options. This series is particularly suited for living rooms or media rooms with ambient light - such as windows daylight or typical evening lighting. However, actual performance may vary depending on specific room conditions, including lighting levels, wall colours, and layout. Projection distance may vary depending on the lens used.

For further information please contact your local Epson office or visit [www.epson.eu/contact-us](http://www.epson.eu/contact-us)

**Austria** 01 253 49 78 333 **Belgium** +32 (0)2 792 04 47 **Czech** +420 246 037 281 **Denmark** 44 50 85 85  
**Finland** 09-3158 3267 **France** 09 74 75 04 04 (Cost of local call, operator charges may apply)  
**Germany** +49 (0) 2159/92 79 500 **Greece** (0030) 211 198 62 12 **Hungary** 06800 147 83 **Ireland** 01 436 7742  
**Italy** 02-660321 10 (0,12 €/min) **Luxembourg** +352 27860692 **Netherlands** +31 (0)20 708 5099  
**Norway** +47 67 11 37 00 **Poland** +48 22 295 37 25 (0,16 zł/min) **Portugal** 707 222 111  
**Romania** 0040 214025024 **Slovakia** +421 232 786 682 **Spain** 935 821 500  
**Sweden** +46 8 5051 3701 (Mobilsamtal - 0,99 kr/min, Lokala samtal - 0,30 kr/min, Utlandssamtal - 0,89 kr/min)  
**Switzerland** 022 592 7923 **United Kingdom** 0871 42 37766 (+10p per minute plus network extras)

Trademarks and registered trademarks are the property of Seiko Epson Corporation or their respective owners.  
Product information is subject to change without prior notice.  
Golf simulation image created for illustration purposes only. Actual software not included.

**EPSON®**