

Business and educational display solutions

Create bigger collaborative spaces



EPSON®

Market leading displays

Epson, the market leader in projectors since 2001¹, offers display solutions with a superior viewing experience compared to flat panel screens, helping to increase audience engagement.

Introducing a wide range of innovative features for enhanced image quality, reliability and flexibility, Epson solutions are the clear choice.

Large, scalable displays to create agile working environments in a variety of spaces. Enjoy hassle-free connectivity for users and seamless connectivity to existing IT infrastructures.



Ultimate displays for hybrid working

Large displays provide a bigger space for remote attendees or learners to truly collaborate with colleagues or classmates in real time. Everyone feels included and represented whether at home or in the office or classroom.



Great content at the right size

The correct display size for your room maximises audience engagement. Unlike fixed flat panel displays, Epson's scalable solutions project incredible quality displays up to 1000". Project images in up to 4K resolution with rich colours and brightness up to three times that of 1-chip DLP projectors³.



Unrestricted viewing experiences

Epson display solutions avoid the glare, blind spots and fingerprints associated with flat panel displays and can be viewed clearly from anywhere in the room, creating equal opportunities and engagement for all.



Hassle-free connectivity

Epson display solutions offer both wired and wireless connectivity, and our iProjection app makes it easy for people to stream and share from their own devices².

An end to maintenance cycles

Epson's fit-and-forget display solutions combine performance with reliability, meaning lower costs, longer life cycles and impressive warranties of up to five years. You can count on up to 17,000 hours life for lamps and up to 30,000 hours for laser light sources, so for schools, that's over 12 years lamp-life, or over 21 years¹ laser-life based on normal school hours*.

A sustainable IT choice

Epson works to TCO Certification⁴ standards as a commitment to social and environmental sustainability. As a member of the RBA, our supplier guidelines are based on the RBA Code of Conduct, and all of our suppliers are expected to adhere to this. At the end of 2023, we became the first RE100 Japanese manufacturer to transition to 100% renewable electricity across all Epson Group owned sites.

*Based on an estimated 200 school days per year and 7 hours lamp usage per day.

Why choose an Epson display?

When choosing the right display solution for your business or educational establishment, you'll soon discover Epson displays hold many advantages over flat panels.

Easier on the eye

Flat panels emit light that appears much brighter and may cause eye fatigue when you view them for long periods of time. Epson projectors produce indirect light with no reflection and clear viewing from every angle making for a more comfortable experience.

Unrestricted viewing

Unlike flat panels, Epson projectors have no blind spots or restricted viewing angles, making it easier to see content even from the sides of a room. There are no visible finger marks left on the screen, and when using Epson displays with anti-bacterial whiteboard surfaces, it eradicates any breeding ground for bacteria and viruses.

Scalable displays

Thanks to scalability and flexibility, Epson projectors suit rooms and audiences of every size. Their ability to deliver large-scale, data-heavy content makes it more comfortable and engaging for the audience to view. With Epson projectors, you have the flexibility to scale a display up to 1000", in multiple aspects ratios. You can also connect multiple projectors to create one large seamless display.



Mobile presenting

With most of our projectors, you aren't restricted to one room, one venue, one setting. They're lightweight, portable and easy to set up.

Easy and cost-effective to install

Flat panels are heavy, require strong walls and a lot more physical exertion to install. Connecting Epson projectors to your business couldn't be easier. Simple to install, they're also fully compatible with most industry-standard image software and collaboration tools.

Enterprise security with peace of mind

Thanks to Epson enterprise security, our projectors operate in a network that can't be accessed wirelessly without a password. Also, any saved data and annotations made on our interactive displays can be encrypted and password protected.



True colours, beautiful detail

Epson's 3LCD technology produces high-resolution images with rich, life-like colours at levels of brightness that make presentations clear and engaging, even in well-lit environments.

Images are up to three times brighter than 1-chip DLP projectors³ and achieve levels of quality, versatility and creative freedom greater than flat panel displays.





High brightness

Inspire and engage audiences by bringing subjects to life with the brightest, most colourful images. With equally high White and Colour Light Output, whatever the subject, you can count on that level of brightness for all content across the entire screen.



Higher contrast, amazing clarity

Project every detail even on the biggest screens with high contrast ratios up to 5,000,000:1. This means that the brightest white is 5,000,000 times brighter than the darkest black, bringing content to life.



High definition for total clarity

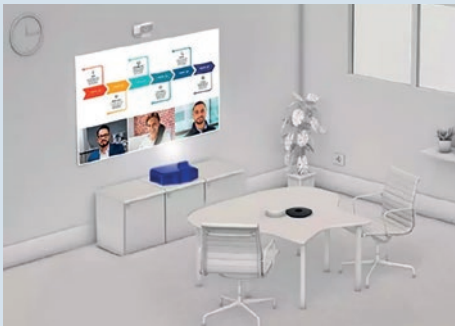
Reproduce every detail to add clarity to any scenario with resolutions up to 4K. Create sharper text and detailed images that are easier on the eye and get your message across more effectively.



Business projectors for hybrid working

Hybrid workspaces have reshaped the way we work. That's why it's very important to combine physical space, technological hardware and collaboration platforms for the ultimate participant experience in hybrid working environments.

Epson workplace projectors allow you to be collaborative and creative whether you're at home, at another office or in the office. There is an Epson hybrid working solution for every meeting room configuration.



Small to medium meeting rooms

In smaller meeting rooms and personal offices, space is at a premium. But that doesn't mean you need to compromise on image quality or the interactive feel of your hybrid meetings.



Large meeting rooms

Home to the strategic decision-making meetings within a business, the modern boardroom must give all participants equal representation and equal access to content being discussed and debated. All of which can be achieved with Epson projection technology.



Boardroom and conference rooms

This space is suitable for more than 12 people, needs to be equipped with technology that encourages interaction and enhances inclusivity, bringing remote participants into the heart of the activity, as if everyone is in the same room.



Flexible display options and sizes

Deliver impactful sessions with a choice of display options and sizes* at one fixed cost:

Up to 100" (16:10 standalone)

Up to 100" (16:9 standalone)

Up to 120" (16:6 standalone)

Up to 155" DuoLink interactivity (EB-1485Fi only), which combines two interactive displays using edge blending.

Up to 160" (21:9 standalone) on EB-810E / EB-815E

Collaborate and connect

Create agile working environments and share content quickly and simply with easy-to-use, intuitive on-screen interfaces and optional pen or finger touch on the interactive models.

Wirelessly connect any mobile device with Epson iProjection app or Screen Mirroring (Miracast) functionality*. Compatible with Windows, MacOS, iOS, Android and Chromebooks, iProjection is free to download and allows you to display content from multiple devices and platforms whilst retaining control over what is displayed and when.

Enhance hybrid meeting interactions

Combine up to four sources, such as video conference systems from multiple video sources and presentations, by creating a sliding split screen*.

Fit and forget laser technology*

Use for up to 30,000 hours (Eco mode) without any maintenance, with the additional peace of mind of a five-year warranty.

Interactive displays

Laser: EB-760Wi, EB-770Fi, EB-1485Fi

Lamp: EB-685Wi, EB-695Wi

Non-interactive displays

Laser: EB-L210SW, EB-L210SF, EB-760W, EB-770F, EB-800F, EB-805F, EB-810E, EB-815E

These laser models are compatible with the ELPWP10 wireless presentation system

Lamp: EB-685W, EB-W56S



EB-810E / EB-815E

Epson's first 4KE ultra-short-throw projector with ultra-wide 21:9 support

Designed for businesses, hybrid working and immersive spaces

Scalable 80-160" display**

Built-in wireless and Screen Mirroring (Miracast)

Multiple connectivity options including HDMI and HDBaseT

Quick and easy set-up with Epson's Setting assistant app

Compatible with the ELPCS01 Mobile AV cabinet

*Not available on all products, please check product specifications for details.

**160" max is based on EB-810E/EB-815E being table/console mounted. If used with ELPMB75 the max display will be 150".

Versatile, scalable display solutions

Bring presentations for audiences of any size to life with our mainstream business displays. Versatile connectivity and installation options mean, whatever your budget, there is a display to suit your needs.

Bright, scalable and affordable

EB-994F

Full HD resolution – 1080p

Flexible installation or move between rooms

4,100 lumens brightness

Up to 304" scalable display

Built-in wireless and Screen Mirroring (Miracast)

Up to 17,000 hours lamp life (in Eco mode)

Other models in the range EB-E24, EB-X49, EB-W49, EB-982W, EB-FH54



Creative laser solutions

EB-L890E

4KE (WUXGA) resolution

8,000 lumens brightness

Up to 500" scalable display

Multi-projection functions

Built-in wireless and Screen Mirroring (Miracast)

Up to 30,000 hours light source life (in Eco mode)

Other models in the range EB-L260F, EB-L265F, EB-L210W, EB-L520U, EB-L530U, EB-L690U, EB-L790U, EB-L895U, EB-L890U, EB-L690SE, EB-L695SE, EB-L690SU, EB-L695SU, EB-L790SU, EB-L795SE



Compact displays with flexible connectivity either mounted or mobile

EB-2250U

Full HD resolution – WUXGA

5,000 lumens brightness

Up to 300" scalable display

Optional wireless

Up to 10,000 hours lamp life (in Eco mode)



Portable, slim and lightweight for truly mobile presenting

EB-1795F

1.8kg

Full HD resolution – 1080p

3,200 lumens brightness

Up to 300" scalable display

Automatic vertical and horizontal keystone correction and Screen Fit

Built-in wireless and Screen Mirroring (Miracast)

Up to 7,000 hours lamp life (in Eco mode)

Other models in the range EB-1780W



Create the right impression

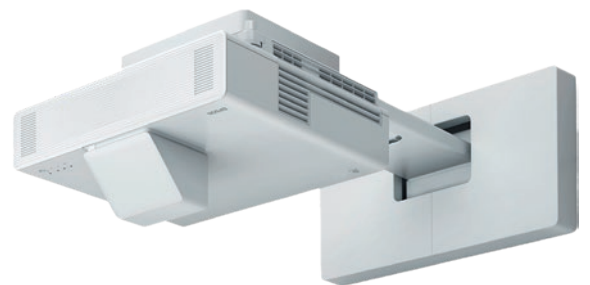
Improve the customer experience in your business or attraction with Epson's lighting and signage solutions.

Flexible mounting options mean projectors can be mounted out of sight and reach on ceilings, walls and lighting tracks for dynamic, impactful signage that doesn't clutter your environment. And, with a maintenance-free life of up to 30,000 hours, these laser light-source products are the ideal solution for displaying engaging messaging.



EB-800 Series

EB-800F, EB-805F



5,000lm with Full HD 1080p resolution

Ultra-short-throw with edge blending support

Scalable and affordable informative signage display solution

Other models in the ultra-short-throw lighting and signage range EB-770F, EB-775F



EV-110 Series

EV-110, EV-115



2,200lm brightness with WXGA solution,
HD ready

Transform spaces with experiential lighting and
signage projection

Display information and entertainment to objects
and surfaces, even glass

Other models in the lighting and signage range
EB-L260F, EB-L265F



Premium solutions for large audiences

Take your visual creativity to the next level with our breathtaking laser installation projectors.

Create superb projections with Epson's range of installation projectors in up to 30,000lm brightness. Transform larger spaces, auditoriums and even buildings with creative display and mapping solutions using Epson laser installation projectors.



Superb image quality

Enjoy the improved texture and exceptional sharpness, clarity and detail of laser projectors with 4K Enhancement and 4K Crystal Motion technology.

Flexibility

A wide choice of interchangeable lenses makes finding the perfect solution for a new or upgraded projection set-up easy. Even short projection distances can be achieved with the optional ultra-short-throw, zero-offset lenses. Motorised optics, advanced geometric correction and 360 degree projection facilitate fast and flexible installation, while portrait projection and edge-blending offer even wider scope for creating stunning, seamless displays in large environments.

Better connections

Integrate easily into almost any IT set-up with advanced connectivity features. Offering HDMI, HDBaseT and RJ45 support across the range, it is easy to connect and control your display. Advanced models in the range support HDMI and SDI input and output.

High reliability

The inorganic phosphor wheel offers superior light- and heat-resistance and excellent reliability, resulting in a light source which is maintenance-free for up to 20,000 hours.

EB-PU1000 Series

EB-PU1006W, EB-PU1007W, EB-PU1007B, EB-PU1008W, EB-PU1008B, EB-PU2010W, EB-PU2010B

EB-PU2200 Series

EB-PU2113W, EB-PU2213B, EB-PU2116W, EB-PU2216B, EB-PU2120W, EB-PU2220B

EB-L30000U

EB-PQ2000 Series

EB-PQ2008W, EB-PQ2008B, EB-PQ2010W, EB-PQ2010B, EB-PQ2213B, EB-PQ2216W, EB-PQ2216B, EB-PQ2220B

4K resolution and HDR with 4K Crystal Motion technology

Ultra-high brightness display solutions - 8,000 to 20,000 lumens

The world's smallest and lightest 10,000 and 20,000 lumens 4K projectors⁵.

Optional lenses and motorised optics for advanced installation flexibility

Optional camera for quick and easy set up and calibration





Present wirelessly

Epson's wireless presentation systems make it easy for you to share your screen and increase your productivity.

Automatic start-up

Epson display solutions automatically turn on when the transmitter is plugged into a laptop.

Receiver functionality

The receiver functionality is integrated with Epson display solutions* reducing your initial costs (ELPWP10 only).

Intuitive design

It's simple enough that anyone can use it without special training. Multi-screen display and screen hiding are just as easy.

Smooth screen switching

Switching to the next presenter's screen is a breeze. No more interrupting meetings to fiddle with cables or moving to a seat where the cable can reach.

Achieve a wire free meeting room



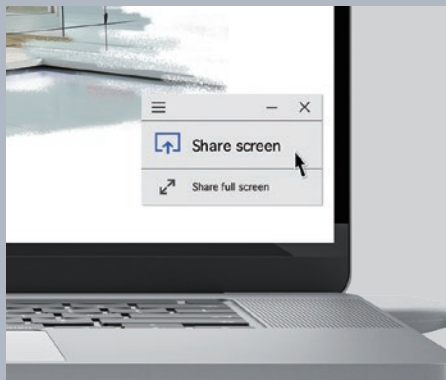
Just plug the transmitter into your laptop

To connect, plug the transmitter into a USB port. No need to worry about wireless settings or cables. No special software to install, no prior preparation.



Click and share it's that easy

One click on the app's button and you are displaying on a big screen.



Share up to four screens on one display

Enhance your productivity by comparing multiple documents on the big, easy-to-view screen.



ELPWP10

For Epson display solutions*



Transmitter x2



Wireless LAN adapter



Tray for transmitters

ELPWP20

For any HDMI display



Transmitter x2



Receiver (base unit)



Tray for transmitters

ELPWT01

Additional transmitter



*Selected Epson laser products only, alternatively use ELPWP20 for all other HDMI displays.

Bring content to life

Bring content into a new dimension by capturing and recording 3D objects and displaying them on the big screen. These compact high-resolution video cameras are easy to connect to your projector, whether you're at home or in the office.

Crisp detail

Capture and record pictures and objects in Full HD using the high-resolution 2-megapixel camera. The optical and digital zoom provides ultra-sharp detail and magnification. Rely on smooth video with no motion blur thanks to a high frame rate of 30 frames per second.

Large, real life image capture

Enjoy full flexibility from any angle by rotating the camera and amplifying content. Easily capture larger materials up to A3 in size – from full A4 textbook spreads to large 3D objects – without having to reposition them.



Easy operation, simple control

Access camera controls easily on-screen for hassle-free presenting without having to move between PC, projector and camera.



A versatile presenting partner

Recordings of images, clips, screen pictures and annotations from another device can be saved and viewed using an SD card, or a USB stick (ELPDC30 only).

Microscope attachment included

Included as standard on ELPDC13, ELPDC21 and ELPDC30.



Portable

ELPDC07, ELPDC13 and ELPDC21 are supplied with carry case. Carry case is optional with the ELPDC30.



The ELPCS01 mobile A/V cabinet

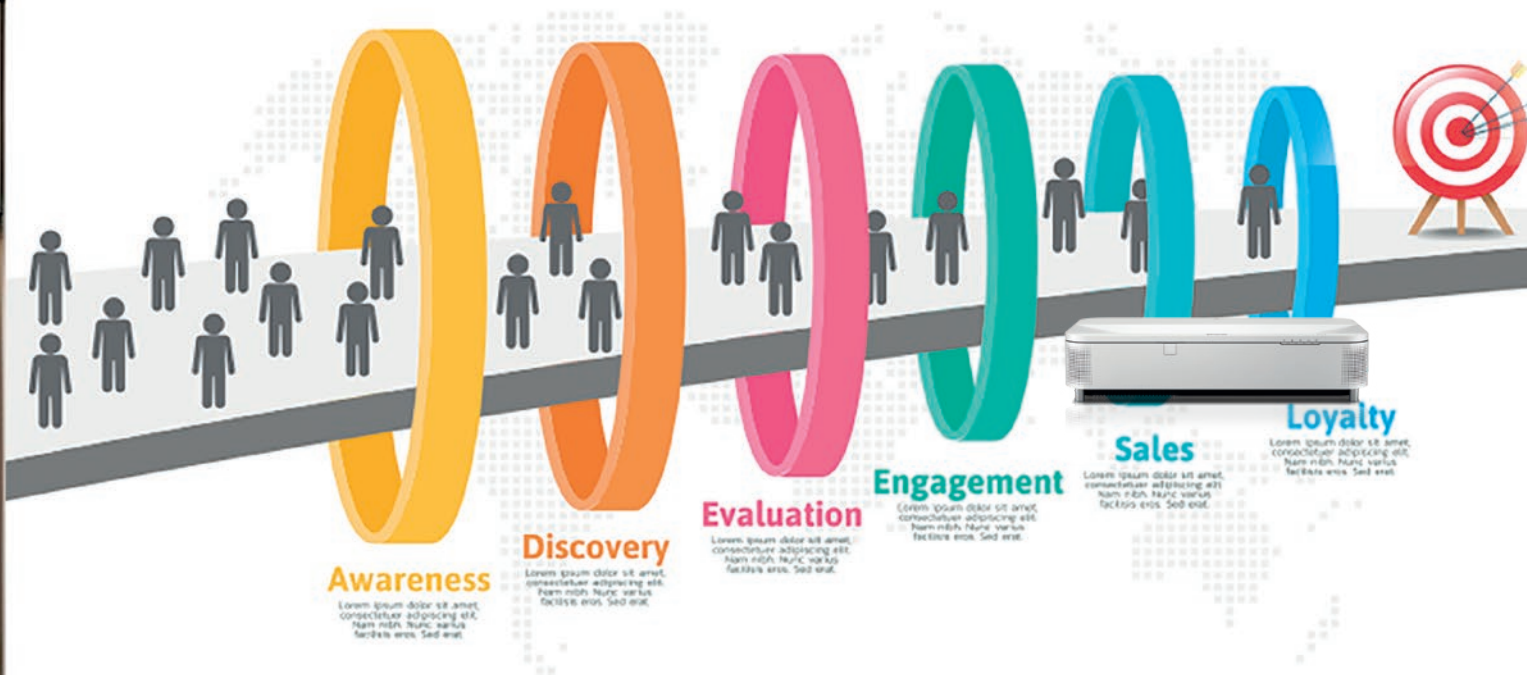
Every environment and every presentation is different, which is why Epson offers a wide range of solutions to create your perfect projector package.

Introducing the ELPCS01, designed specifically for use with the EB-810E/EB-815E ultra-short-throw projectors (sold separately). It offers high quality projection of up to 160" in any room by simply moving the unit to wherever it is needed.

All you require is a blank wall and the Epson Setting Assistant app to easily ensure the display dimensions are correct and the image is clear.



INFOGRAPHIC
Design Template



Create the perfect solution

We offer a wide range of solutions to create your perfect projector package, including lamps, ceiling mounts, screens and lenses.



Epson genuine lamps

Guarantee the best, brightest and most consistent images for longer with genuine Epson lamps. They guarantee the best image quality, maximise reliability, minimise maintenance and ensure ongoing comprehensive warranty cover.



Ceiling mounts

Fit your projector perfectly to your venue and ensure flexibility, safety and security with tailor-made mounts.



2.4GHz wireless LAN adapter ELPAP10

2.4/5GHz wireless LAN adapter ELPAP11

Make fast, secure, wireless presentations or connect to your wireless infrastructure with this USB adapter.

Selected product compatibility.



Active speakers ELPSP02

Add powerful audio to any meeting space solution with compact speakers.



Control and connection box ELPCB03N

Benefit from greater device connectivity, ease of use and neat cable management. This convenient, wall-mounted box boasts a direct source button for 3x HDMI connectivity and split screen support.



Wireless presentation system ELPWP10

Intuitive, low-cost wireless presentation system that improves collaboration by displaying content from up to four devices on a large display.

Expand possibilities

We have built innovative relationships with leading technology companies to enhance the presenting experience even further. From wireless presenting and remote conferencing to whiteboard software, digital content and device control, we make sure that every element adds value and has guaranteed compatibility. This ensures you have the most up-to-date systems, now and in the future.



Crestron

Crestron automation and control solutions allow you to control entire environments with the push of a button, integrating systems such as AV, lighting, shading, security, BMS and HVAC. Monitor, manage and control everything from one platform.



Extron

Extron designs advanced technologies that create impressive-looking images, high-quality sound, and systems that are easy to control and work reliably. Extron's asset management tools help technology professionals manage large numbers of audio/visual systems.



Smit Visual

Smit Visual is a leading Dutch manufacturer of visual supplies, such as whiteboards and projection boards.



Mozaik Education

Mozaik offers market leading interactive educational K-12 content (3D scenes, videos, apps, games, etc) for all subjects with built-in white-boarding functions, LMS, homework and classroom management features.

Enhance your projector's capabilities

Inspiring presentations and innovative solutions go hand-in-hand. That's why we have developed a dynamic portfolio of advanced display tools. Epson solutions will optimise your business productivity and give you a platform to deliver your best work and ideas.

As the world's leading projector manufacturer¹, we enable you to present the way you want, where you want, easily and effectively. To discover just how much more flexible your current Epson display solution could be, visit epson.eu/epson-projector-software.



Stream, share and collaborate

Wirelessly stream and share

iProjection for PC / Mac

Wireless Screen Mirroring solution that utilises the built-in Wi-Fi connection of the presenter's device to stream and share content to the projector. Up to 50 devices can be connected to the same projector and up to four can present their content at the same time. The built-in moderator mode allows one user to take control of incoming content from the connected devices.

iProjection app for iOS / Android

Feature-rich BYOD solution for smartphones and tablets allows users to stream and share content, annotate and even control the projector, all directly from their devices. There is also a multi device mode for group collaboration. The built-in moderator mode allows one user to take control of incoming content from the connected devices.

iProjection app for Chromebooks

Supports fully mirrored display of all your Chromebook content including Google Docs, Slides, Sheets and Chrome browser.

Screen Mirroring (Miracast)

Industry-wide standard that enables screen mirroring from compatible smartphones, tablets and PCs to enhance BYOD flexibility and provide the freedom of wireless connectivity.

Interactivity and collaboration

Easy Interactive Tools

Gives you annotation and drawing capability on projected images or a whiteboard. You can also perform simple control of your document camera and projector.

Projector management solutions

Monitoring and control

Epson Projector Management

The free-to-download centralised management utility lets IT, facilities and network managers efficiently monitor, control and manage their display solution fleet. The software is also compatible with PJLink certified devices.

Functions include operation status, error reporting and input source switching. The scheduling feature can power down all the projectors in a building, while error monitoring helps avoid delays and downtime.

Epson Projector Management Connected

Alternatively, there is Epson Projector Management Connected, which offers similar functionality to Epson Projector Management with the added convenience of accessing and managing all of your projectors via a browser rather than an app.

projection-service.epson.com/epm-connected/

Epson Projector Professional Tool

Simplify multi-projector installations with intuitive geometry corrections such as edge-blending and adjustment for curved surfaces, plus colour-matching and brightness controls.

Epson Projector Configuration Tool

This free application for smart devices makes setting up and configuring multiple projectors easy. Simply register the projector's data using NFC connectivity, read and edit the settings in the app and then upload the settings to a fleet of projectors without even needing to power the projectors on.

Simple set up

Epson Setting Assistant

This clever app automatically corrects the shape of a projected image by taking pictures with your camera. By taking a photo of the projected pattern, the app automatically corrects distortion in the projected image and adjusts its shape to match the screen.

Content management

Epson Projector Content Manager

Add images and videos to playlists, and save them on an external storage device (SD card or USB drive). Insert the storage device into the projector to easily project your playlist content without using a cable connection. Add custom shape filters, overlay effects and scheduling.

Epson Creative Projection

Create custom content on your smartphone or tablet, with ease. Enliven rooms and product displays by combining your photos and movies with the app's built-in templates and stamps.

Utilities

Display size calculator

Work out the ideal display size for your room based on room dimensions, layout and number of seats.

epson.eu/display-size-matters

Throw distance calculator

Easily work out image sizes and projection distance dimensions across our entire projector range. Simply select your desired screen size or the projection distance, and the smart online tool will automatically calculate all the necessary installation dimensions.

epson.eu/distancecalculator





1 2001 to 2023, 500-lumen and above, excluding screenless TVs, Futuresource Consulting – Quarterly Projector Market Insights – Worldwide Analyzer CY23Q4.

2 Networking not available on all products, please check product specifications for details.

3 Colour brightness (colour light output) in brightest mode, measured by a third-party lab in accordance with IDMS 15.4. Colour brightness will vary depending on usage conditions. Top-selling Epson 3LCD projectors versus top-selling 1-chip DLP projectors based on NPD sales data for January 2022 to December 2022.

4 TCO Certified is the world's most comprehensive sustainability certification for IT products, which must meet life cycle criteria for social and environmental sustainability. For more information, please visit <https://tco certified.com>

5 As of November 2024. Main unit without lens. 10,000lm and 20,000lm in accordance with ISO 21118.



Please recycle responsibly

* Warranty offers are not available for all countries. Please contact your local Epson representative.

For further information please contact your local Epson office or visit www.epson.eu/contact-us

Austria 01 253 49 78 333 Belgium +32 (0)2 792 04 47 Czech +420 246 037 281 Denmark 44 50 85 85 Finland 09-3158 3267 France 09 74 75 04 04 (Cost of local call, operator charges may apply) Germany +49 (0) 2159/92 79 500 Greece (0030) 211 198 62 12 Hungary 06800 147 83 Ireland 01 436 7742 Italy 02-660321 10 (0,12 €/min) Luxembourg +352 27860692 Netherlands +31 (0)20 708 5099 Norway +47 67 11 37 00 Poland +48 22 295 37 25 (0,16 zł/min) Portugal 707 222 111 Romania 0040 214025024 Slovakia +421 232 786 682 Spain 935 821 500 Sweden +46 8 5051 3701 (Mobilsamtal – 0,99 kr/min, Lokala samtal – 0,30 kr/min, Utlandssamtal – 0,89 kr/min) Switzerland 022 592 7923 United Kingdom 0871 42 37766 (+10p per minute plus network extras)

Trademarks and registered trademarks are the property of Seiko Epson Corporation or their respective owners. Product information is subject to change without prior notice.

EPSON®