

EPSON®

THE WORLD'S
BEST-SELLING
INK TANK
PRINTERS¹

ecotank

*JUST FILL
& FORGET*

No ink refills for
up to 3 years¹⁵



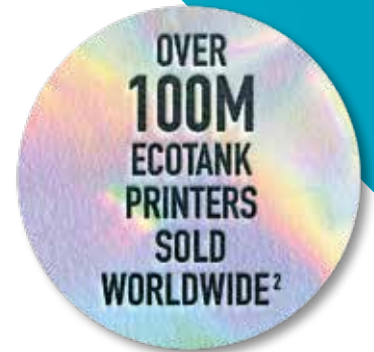
*GOODBYE
CARTRIDGES*
Usain Bolt



We've changed home printing forever

Epson EcoTank printers deliver superb quality, hassle-free printing at an ultra-low-cost. The perfect solution for busy homes, home offices and small businesses, they come with ultra-high-capacity refillable ink tanks allowing you to print thousands of pages without the hassle of replacement ink cartridges.

The ink filling system minimises spills with bottles that are easy to open and have an airflow system so squeezing is not necessary during the filling process. The bottles also feature a key-lock design that ensures each tank is filled with the right colour.



Home printers



Includes ink to print up to **14,000** pages³

Business printers



Includes ink to print up to **13,300** pages³

Mono printers



Includes ink to print up to **11,000** pages³

Photo printers



Print up to **2,300** photos with replacement ink bottles³

Office printers



Includes ink to print up to **14,000** pages³

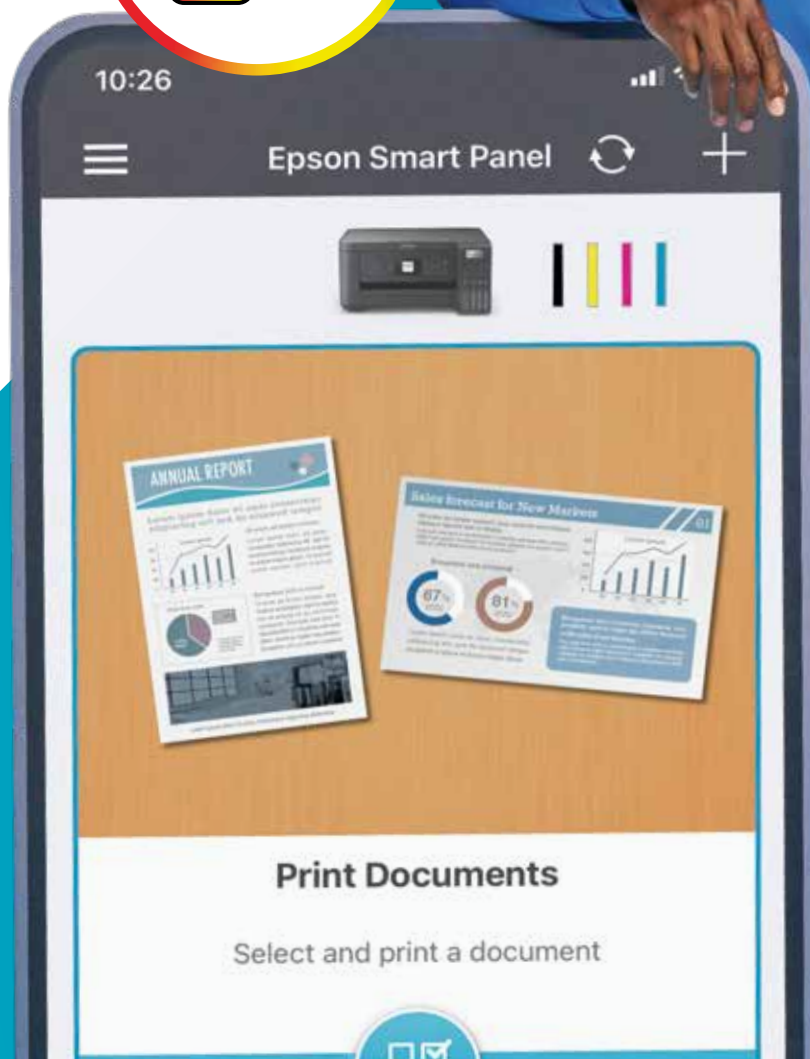


PRINT ON THE GO

with the Epson Smart Panel app

For families on the go, or for businesses that never stop, the Epson Smart Panel app enables you to control your printer from your smart phone or tablet⁴. You can print, copy and scan documents or photos, set up, monitor and troubleshoot your printer, or just let your creativity flow with a wide range of artistic templates.

Look out for the Smart Panel symbol which shows which printers are compatible with the app.



For *BUSY HOUSEHOLDS*

EcoTank ET-1810



Print
Connectivity: Wi-Fi®, Wi-Fi Direct®
Scan and copy with the Epson Smart Panel app
Easy mobile printing
Epson Micro Piezo technology
1 year / 30,000 pages warranty¹⁴
104 ink series: 1 full set included

EcoTank ET-2830



Print, copy & scan
Connectivity: Wi-Fi, Wi-Fi Direct
Compatible with Epson Smart Panel app
Easy mobile printing
Epson PrecisionCore technology
Apple AirPrint compatible
Made with at least 30% recycled plastic¹⁶
1 year / 50,000 pages warranty¹⁴
104 ink series: 1 full set included + 1 extra black

EcoTank ET-2860 series



Print, copy & scan
Connectivity: Wi-Fi, Wi-Fi Direct
Compatible with Epson Smart Panel app
Easy mobile printing
Epson Micro Piezo technology
1 year / 30,000 pages warranty¹⁴
104 ink series: 1 full set included

EcoTank ET-2840



Print, copy & scan
Connectivity: Wi-Fi, Wi-Fi Direct
Compatible with Epson Smart Panel app
Easy mobile printing
Epson PrecisionCore technology
Apple AirPrint compatible
3.7cm colour LCD screen
Made with at least 30% recycled plastic¹⁶
1 year / 50,000 pages warranty¹⁴
104 ink series: 1 full set included + 1 extra black

EcoTank ET-2870 series



Print, copy & scan
Connectivity: Wi-Fi, Wi-Fi Direct
Compatible with Epson Smart Panel app
Easy mobile printing
Epson Micro Piezo technology
Apple AirPrint compatible
3.7cm colour LCD screen
1 year / 30,000 pages warranty¹⁴
104 ink series: 1 full set included

EcoTank ET-2850 series



Print, copy & scan
Connectivity: Wi-Fi, Wi-Fi Direct
Automatic double-sided printing
Compatible with Epson Smart Panel app
Easy mobile printing
Epson Micro Piezo technology
Apple AirPrint compatible
3.7cm colour LCD screen
1 year / 30,000 pages warranty¹⁴
102 ink series: 1 full set included + 1 extra black

Big bottles LOADS OF INK

UP TO
3 YEARS OF
INK INCLUDED¹⁵

SAVE UP TO
90% ON
INK COSTS⁵

Our innovative EcoTank range delivers an unbeatable cost-per-page saving you up to 90% on ink⁵.

With up to 3 years of ink included in the box¹⁵ you can print thousands of pages without the hassle of frequently changing cartridges. So you can just fill and chill!

For **PHOTO ENTHUSIASTS**

EcoTank ET-18100



Ultra-low-cost per photo
6-colour ink system
Connectivity: Wi-Fi, Wi-Fi Direct
Compatible with Epson Smart Panel app
Easy mobile printing
Epson Micro Piezo technology
Print onto CD/DVD and PVC/ID cards
1 year / 50,000 pages warranty¹⁴
107 ink series: 1 full set included

EcoTank ET-8500



Print, copy & scan
Ultra-low-cost per photo
6-colour ink system
Additional grey ink for superior black and white photos
Connectivity: Wi-Fi, Wi-Fi Direct and Ethernet
Compatible with Epson Smart Panel app
Easy mobile printing
Epson Micro Piezo technology
Apple AirPrint compatible
10.9cm colour touchscreen
Print onto CD/DVD and directly from a memory card
Automatic double-sided printing
Separate A4 and photo paper trays
Rear paper feed for speciality media up to A4
Straight pass feed for media up to A4 width, 2m length and 1.3mm thickness
1 year / 50,000 pages warranty¹⁴
114 ink series: 1 full set included



EcoTank ET-8550



Print, copy & scan
Ultra-low-cost per photo
6-colour ink system
Additional grey ink for superior black and white photos
Connectivity: Wi-Fi, Wi-Fi Direct and Ethernet
Compatible with Epson Smart Panel app
Easy mobile printing
Epson Micro Piezo technology
Apple AirPrint compatible
10.9cm colour touchscreen
Print onto CD/DVD and directly from a memory card
Automatic double-sided printing
Separate A4 and photo paper trays
Rear paper feed for specialty media up to A3+
Straight pass feed for media up to A3+ width, 2m length and 1.3mm thickness
1 year / 50,000 pages warranty¹⁴
114 ink series: 1 full set included



For **HOME & SMALL OFFICES**

EcoTank ET-3850



Print, copy & scan
Automatic double-sided printing
30-page document feeder
Connectivity: Wi-Fi, Wi-Fi Direct and Ethernet
Compatible with Epson Smart Panel app
Easy mobile printing
Epson PrecisionCore technology
Apple AirPrint compatible
6.1cm colour LCD screen
250 sheet front-loading paper tray
1 year / 50,000 pages warranty¹⁴
102 ink series: 1 full set included
+ 1 extra black

EcoTank ET-4800



Print, copy, scan & fax
30-page document feeder
Connectivity: Wi-Fi, Wi-Fi Direct and Ethernet
Compatible with Epson Smart Panel app
Easy mobile printing
Epson Micro Piezo technology
Apple AirPrint compatible
3.7cm colour LCD screen
1 year / 30,000 pages warranty¹⁴
104 ink series: 1 full set included

EcoTank ET-4810



Print, copy, scan & fax
30-page document feeder
Connectivity: Wi-Fi, Wi-Fi Direct and Ethernet
Compatible with Epson Smart Panel app
Easy mobile printing
Epson PrecisionCore technology
3.7cm colour LCD screen
Apple AirPrint compatible
Made with at least 30% recycled plastic¹⁶
1 year / 50,000 pages warranty¹⁴
104 ink series: 1 full set included
+ 1 extra black

EcoTank ET-4850 series



Print, copy, scan & fax
Automatic double-sided printing
30-page document feeder
Connectivity: Wi-Fi, Wi-Fi Direct and Ethernet
Compatible with Epson Smart Panel app
Easy mobile printing
Epson PrecisionCore technology
Apple AirPrint compatible
6.1cm colour touchscreen
250 sheet front-loading paper tray
1 year / 50,000 pages warranty¹⁴
102 ink series: 1 full set included
+ 1 extra black

EcoTank ET-14100



Print up to A3
Connectivity: Wi-Fi and Wi-Fi Direct
Compatible with Epson Smart Panel app
Easy mobile printing
Epson PrecisionCore technology
1 year warranty / 50,000 pages warranty¹⁴
104 ink series: 1 full set included
+ 1 extra black

EcoTank ET-15000



Print, copy, scan & fax
Automatic A4 double-sided printing, scanning, copying and faxing
Print A3+ from the rear paper tray
Connectivity: Wi-Fi, Wi-Fi Direct and Ethernet
Compatible with Epson Smart Panel app
Easy mobile printing
Epson PrecisionCore technology
35-page document feeder
Apple AirPrint compatible
6.8cm colour touchscreen
250 sheet front-loading paper tray
1 year / 50,000 pages warranty¹⁴
102 ink series: 1 full set included

EcoTank *COLOUR RANGE*

	Functionality	Included ink bottle yield black/colour ³	Replacement ink bottle yield black/colour ³	A4 ISO print speed black/colour (ppm) ⁵	Epson technology	LOD screen (cm)	ADF	Auto double-sided printing	Scan resolution (dpi)	Epson Smart Panel ¹	Epson Email Print ⁴	Remote Print Driver ⁴	Epson Scan-to-Cloud ⁴	Apple AirPrint ³	Wi-Fi	Wi-Fi Direct	Automatic Wi-Fi set-up ¹²	Ethernet	Warranty ¹⁴
ET-1810	A4 Printer	3,600/ 6,500	4,500/ 7,500	10/ 5	Micro Piezo	-	-	-	-	•	•	•	-	-	•	•	•	-	12 months or 30,000 pages
ET-2860 series	Printer Scanner Copier	3,600/ 6,500	4,500/ 7,500	10/ 5	Micro Piezo	-	-	-	1200	•	•	•	-	-	•	•	•	-	12 months or 30,000 pages
ET-2870 series	Printer Scanner Copier	3,600/ 6,500	4,500/ 7,500	10/ 5	Micro Piezo	3.7 colour LCD	-	-	1200	•	•	•	-	•	•	•	•	-	12 months or 30,000 pages
ET-2830	Printer Scanner Copier	6,600/ 5,900	4,300/ 7,300	15/ 8	Precision Core	-	-	-	1200	•	•	•	-	•	•	•	•	-	12 months or 50,000 pages
ET-2840	Printer Scanner Copier	6,600/ 5,900	4,300/ 7,300	15/ 8	Precision Core	3.7 colour LCD	-	-	1200	•	•	•	-	•	•	•	•	-	12 months or 50,000 pages
ET-2850 series	Printer Scanner Copier	14,000/ 5,200	7,500/ 6,000	10.5/ 5	Micro Piezo	3.7 colour LCD	-	•	1200	•	•	•	-	•	•	•	•	-	12 months or 30,000 pages
ET-3850	Printer Scanner Copier	14,000/ 5,200	7,500/ 6,000	15.5/ 8.5	Precision Core	6.1 colour LCD	•	•	1200	•	•	•	•	•	•	•	•	•	12 months or 50,000 pages
ET-4800	Printer Scanner Copier Fax	3,600/ 6,500	4,500/ 7,500	10/ 5	Micro Piezo	3.7 colour LCD	•	-	1200	•	•	•	-	•	•	•	•	•	12 months or 30,000 pages
ET-4810	Printer Scanner Copier Fax	6,600/ 5,900	4,300/ 7,300	15/ 8	Precision Core	3.7 colour screen	•	-	1200	•	•	•	-	•	•	•	•	•	12 months or 50,000 pages
ET-4850 series	Printer Scanner Copier Fax	14,000/ 5,200	7,500/ 6,000	15.5/ 8.5	Precision Core	6.1 touch screen	•	•	1200	•	•	•	•	•	•	•	•	•	12 months or 50,000 pages
ET-8500	Printer Scanner Copier	1,800 10x15cm photos	2,300 10x15cm photos	16/ 12	Micro Piezo	10.9 touch screen	-	•	1200	•	•	•	•	•	•	•	•	•	12 months or 50,000 pages
ET-8550	A3+ Printer Scanner Copier	1,800 10x15cm photos	2,300 10x15cm photos	16/ 12	Micro Piezo	10.9 touch screen	-	•	1200	•	•	•	•	•	•	•	•	•	12 months or 50,000 pages
ET-14100	A3 Printer	6,400/ 5,600	4,500/ 7,000	15/ 8	Precision Core	-	-	-	-	•	-	-	-	-	•	•	•	-	12 months or 50,000 pages
ET-15000	A3+ Printer A4 Scanner A4 Copier Fax	6,200/ 5,200	7,500/ 6,000	17/ 9	Precision Core	6.8 touch screen	•	•	1200	•	•	•	•	•	•	•	•	•	12 months or 50,000 pages
ET-18100	Printer	1,500 10x15cm photos	2,100 10x15cm photos	8/ 8	Micro Piezo	-	-	-	-	•	•	•	-	-	•	•	•	-	12 months or 50,000 pages

EcoTank for *BUSINESS* *GOODBYE TONERS*

Our range of EcoTank printers are ideal for small businesses. This range provides ultra-fast printing at an ultra-low cost per page, as well as integrated high-capacity ink tanks that reduce the hassle of replacing cartridges or toners.

Save with lower printing costs

A cost effective solution for businesses, this series allows you to print over 360 pages in black for just £1⁸.

High-speed versatility

This EcoTank range is perfect for fast-paced environments with print speeds of up to 25ppm⁶, first-page printout in as little as 5½ seconds⁷, ultra-fast double-sided printing and rapid ADF.

Designed for businesses

Look forward to high-quality printing with all pigment inks which are smudge and highlighter resistant. With large touch screens and wireless connections to smart devices, this EcoTank range has it all.



4-colour ●●●●

EcoTank ET-5100 series



Print, copy and scan
ET-5170 also features fax
250-sheet front tray
35-sheet automatic document feeder
Connectivity: Wi-Fi, Wi-Fi Direct and Ethernet
Compatible with Epson Smart Panel app
Easy mobile printing
Epson PrecisionCore technology
Apple AirPrint compatible
6.1cm colour touchscreen
1 year / 100,000 pages warranty¹⁴
113 ink series: 1 full set included
+ 1 extra black

EcoTank ET-5800 series



Print, copy, scan and fax
ET-5880 features PCL support
Ultra-fast print and scan speeds
Dual paper-loading: 2 x A4 250-sheet front tray, 50-sheet rear feed
50-sheet high-speed document feeder
Connectivity: Wi-Fi, Wi-Fi Direct and Ethernet
Compatible with Epson Smart Panel app
Easy mobile printing
Epson PrecisionCore technology
Apple AirPrint compatible
10.9cm colour touchscreen
1 year / 200,000 pages warranty¹⁴
113 ink series: 1 full set included

EcoTank ET-16150



Print
Ultra-fast print speeds
Dual paper-loading: 2 x A3 250-sheet front tray, 50-sheet rear feed
Connectivity: Wi-Fi, Wi-Fi Direct and Ethernet
Compatible with Epson Smart Panel app
Easy mobile printing
Epson PrecisionCore technology
Apple AirPrint compatible
6.1cm colour LCD screen
1 year / 200,000 pages warranty¹⁴
113 ink series: 1 full set included

1-colour (mono) ●

EcoTank ET-16600 series



Print, copy, scan and fax
ET-16680 features PCL support
Ultra-fast print and scan speeds
Dual paper-loading: 2x A3 250-sheet front tray, 50-sheet rear feed
50-sheet high-speed document feeder
Connectivity: Wi-Fi, Wi-Fi Direct and Ethernet
Compatible with Epson Smart Panel app
Easy mobile printing
Epson PrecisionCore technology
Apple AirPrint compatible
10.9cm colour touchscreen
1 year / 200,000 pages warranty¹⁴
113 ink series: 1 full set included

EcoTank ET-M16600 series



Print, copy and scan
ET-M16680 features PCL support
Ultra-fast print and scan speeds
Dual paper-loading: 2 x A3 250-sheet front tray, 50-sheet rear feed
50-sheet high-speed document feeder
Connectivity: Wi-Fi, Wi-Fi Direct and Ethernet
Compatible with Epson Smart Panel app
Easy mobile printing
Epson PrecisionCore technology
Apple AirPrint compatible
6.8cm colour touchscreen
1 year / 200,000 pages warranty¹⁴
113 ink series: 1 ink bottle included



EcoTank for BUSINESS RANGE



PRECISIONCORE
HEAT-FREE

	Functionality	Included ink bottle yield black/colour ³	Replacement ink bottle yield black/colour ³	A4 ISO print speed black/colour (ppm) ⁶	Epson technology	LOD screen (cm)	ADF	Auto double-sided printing	Scan resolution (dpi)	Epson Smart Panel ⁴	Epson Email Print ⁴	Remote Print Driver ⁴	Epson Scan-to-Cloud ⁴	Apple AirPrint ¹³	Wi-Fi	Wi-Fi Direct	Automatic Wi-Fi set-up ¹²	Ethernet	PCL compatible	Warranty ¹⁴	
ET-5150	Printer Scanner Copier	13,300/ 5,200	7,500/ 6,000	17/ 9.5	Precision Core	6.1 touch screen	•	•	1200	•	•	•	•	•	•	•	•	-	-	12 months or 100,000 pages	
ET-5170	Printer Scanner Copier Fax	13,300/ 5,200	7,500/ 6,000	17/ 9.5	Precision Core	6.1 touch screen	•	•	1200	•	•	•	•	•	•	•	•	-	-	12 months or 100,000 pages	
ET-5185	Printer Scanner Copier Fax	13,300/ 5,200	7,500/ 6,000	17/ 9.5	Precision Core	6.1 touch screen	•	•	1200	•	•	•	•	•	•	•	•	-	•	12 months or 100,000 pages	
ET-5805	Printer Scanner Copier Fax	4,500/ 2,800	7,500/ 6,000	25/ 12	Precision Core	10.9 touch screen	•	•	1200	•	•	•	•	•	•	•	•	-	-	12 months or 200,000 pages	
ET-5855	Printer Scanner Copier Fax	4,500/ 2,800	7,500/ 6,000	25/ 25	Precision Core	10.9 touch screen	•	•	1200	•	•	•	•	•	•	•	•	•	-	-	12 months or 200,000 pages
ET-5885	Printer Scanner Copier Fax	4,500/ 2,800	7,500/ 6,000	25/ 25	Precision Core	10.9 touch screen	•	•	1200	•	•	•	•	•	•	•	•	•	•	•	12 months or 200,000 pages
ET-16150	A3+ Printer	4,500/ 2,800	7,500/ 6,000	25/ 25	Precision Core	6.1 colour LCD	-	•	-	•	•	•	-	•	•	•	•	-	-	12 months or 200,000 pages	
ET-16605	A3+ Printer A3 Scanner A3 Copier Fax	4,500/ 2,800	7,500/ 6,000	25/ 12	Precision Core	10.9 + hard keys	•	•	1200	•	•	•	•	•	•	•	•	-	-	12 months or 200,000 pages	
ET-16655	A3+ Printer A3 Scanner A3 Copier Fax	4,500/ 2,800	7,500/ 6,000	25/ 25	Precision Core	10.9 + hard keys	•	•	1200	•	•	•	•	•	•	•	•	-	-	12 months or 200,000 pages	
ET-16685	A3+ Printer A3 Scanner A3 Copier Fax	4,500/ 2,800	7,500/ 6,000	25/ 25	Precision Core	10.9 + hard keys	•	•	1200	•	•	•	•	•	•	•	•	•	•	•	12 months or 200,000 pages
ET-M16600	A3+ Printer A3 Scanner A3 Copier	4,900	7,500	25	Precision Core	6.8 touch screen	•	•	1200	•	•	•	•	•	•	•	•	-	-	12 months or 200,000 pages	
ET-M16685	A3+ Printer A3 Scanner A3 Copier	4,900	7,500	25	Precision Core	6.8 touch screen	•	•	1200	•	•	•	•	•	•	•	•	•	•	•	12 months or 200,000 pages

Serious about *SUSTAINABILITY*

Save on energy

Epson's Heat-Free Printing Technology means your printer doesn't need to warm up when switched on so the first page can be printed fast and uses less power consumption compared to a laser printer. You'll get improved reliability, reduced downtime and less environmental impact.¹⁷

Built to last

With an EcoTank you're investing in a great product that's built to last. Special features prevent the ink nozzles getting clogged and Heat-Free Printing Technology means the printhead will last the lifetime of the printer¹⁸ so you can benefit from no unnecessary replacement parts or upgrades.

Zero cartridge waste

The ultra-high-capacity ink tanks on an EcoTank printer are refilled with ink bottles so you'll never be replacing cartridges. With the ink included in the box you can forget about ink refills for up to 3 years¹⁵ so you can just fill and chill!

*JUST FILL
AND CHILL
Usain Bolt*



* Register at epson.co.uk/extended-warranty for your
FREE 5 YEAR WARRANTY

Print more *SAVE MORE*

Ultra-low-cost printing

Saving you over 90% on the cost per page¹⁰, you can take the hassle out of printing with up to 11,000 pages worth of ink included in the box⁹. That's the equivalent of up to 5 toner cartridges on average¹⁰.

Save time

Printing is fast with no warm-up time, first print out in as little as 6 seconds⁷ and print speeds of up to 20ppm⁶.

Save energy

Cut energy usage and reduce overheads with savings of up to 95% in power consumption compared to mono laser printers¹¹.

Peace of mind

Giving peace of mind, every EcoTank mono printer comes with a 1-year/100,000-page warranty¹⁴.



*1 INK
BOTTLE
=
UP TO
5 LASER
TONERS¹⁰*

*SAVE UP TO
90% ON
INK COSTS¹⁰*

Mono printers for *SMALL OFFICES AND BUSINESSES*

1-colour ●

EcoTank ET-M1120



Print
Epson Micro Piezo technology
150 sheet front-loading paper tray
Connectivity: Wi-Fi, Wi-Fi Direct
Easy mobile printing
1 year / 100,000 pages warranty¹⁴
111 ink: 1 ink bottle included

EcoTank ET-M1170 series



Print
ET-M1180 features PCL support
Automatic double-sided printing
Epson PrecisionCore Heat-Free technology
250 sheet front-loading paper tray
Connectivity: Wi-Fi, Wi-Fi Direct and Ethernet
Easy mobile printing
1 year / 100,000 pages warranty¹⁴
111 ink: 2 ink bottles included

EcoTank ET-M2120



Print, copy and scan
3.7cm colour LCD screen
150 sheet front-loading paper tray
Epson Micro Piezo technology
Connectivity: Wi-Fi, Wi-Fi Direct
Easy mobile printing
1 year / 100,000 pages warranty¹⁴
111 ink: 1 ink bottle included

EcoTank MONO RANGE

	Functionality	Included ink bottle yield ⁹	Epson technology	Print speed (ppm) ⁶	LOD screen (cm)	Paper handling	Auto double sided printing	ADF	Wi-Fi / Wi-Fi Direct	Ethernet	Epson Connect ⁴	Apple AirPrint ¹³	PCL compatible
ET-M1120	Printer	5,000	Micro Piezo	15	-	150 sheet front feed	-	-	•	-	•	-	-
ET-M1170	Printer	11,000	Precision Core	20	-	250 sheet front feed	•	-	•	•	•	-	-
ET-M1180	Printer	11,000	Precision Core	20	-	250 sheet front feed	•	-	•	•	•	-	•
ET-M2120	Printer Scanner Copier	5,000	Micro Piezo	15	3.7cm	150 sheet front feed	-	-	•	-	•	•	-
ET-M3180	Printer Scanner Copier Fax	11,000	Precision Core	20	6.1cm touchscreen	250 sheet front feed	•	•	•	•	•	•	•



INCLUDES
INK TO
PRINT UP TO
11,000
PAGES⁹

¹As of 31st March 2023. IDC, Quarterly Hardcopy Peripherals Tracker, Q2 2022 to Q1 2023 shipments, published Q1 2023. ²As of 31st January 2024. Cumulative sales of Epson ink tank printers since launch in 2010 based on Epson internal shipment data. ³Quoted yields are extrapolated based on Epson original methodology from the print simulation of Test Patterns provided in ISO/IEC 24712 or 29103. Quoted yields are NOT based on ISO/IEC 24711 or 29102. Quoted yields may vary depending on the images that you are printing, the paper type that you are using, the frequency of your prints and environmental conditions such as temperature. During the initial printer setup, a certain amount of ink is used to fill the print head's nozzles, therefore the yield of the initial bundled set will be lower. ⁴Mobile printing solutions require a wireless and/or an Internet connection to the printer. For a list of Epson Connect enabled printers, compatible devices, apps and ways to connect, visit www.epson.eu/connect ⁵Based on Epson calculations, the average cost per page saving and the average number of inkjet cartridges required to print the same number of pages as the Epson EcoTank "102" and "104" ink bottles. Comparison between the average yield (A4 prints of ISO/IEC 24712 test pattern) of EcoTank "102" and "104" ink bottle series and the genuine consumables (IDC, Hardcopy Peripherals Consumables Tracker, 2021 shipments, published Q1 2022) used within the 30 best-selling consumer A4 inkjet cartridge printers in France, Germany, Italy, Spain and UK (IDC, Quarterly Hardcopy Peripherals Tracker, 2021 shipments, published Q2 2022). Cost per page calculated by dividing the relevant bottle/cartridge average selling price as tracked by IDC by the yield. ⁶Determined in accordance with ISO/IEC 24734 showing the average of ESAT from the Office Category Test for default simplex. For more information visit www.epson.eu/testing. ⁷First-Print-Out-Time (FPOT) measurement method: ISO/IEC17629 Office Category Test; paper size A4. A set of Microsoft Word, Microsoft Excel and PDF files (each set containing 4 pages) is continuously printed. Measurement is based on the average time for the first of the four single-sided prints to exit the printer. Measurement starts when the print button is pressed and ends when the first page of the set exits. ⁸Number of pages printed is based on the highest cost per page (CPP) of Epson 113 ink bottles. CPP is calculated from the total combined price of cyan, magenta and yellow ink bottles RRP's for colour pages or the black ink bottle RRP's for black pages, divided by the published page yields. RRP correct as of May 2023. ⁹Quoted yields are extrapolated based on Epson original methodology from the print simulation of Test patterns provided in ISO/IEC 19752. Quoted yields are NOT based on ISO/IEC 24711. Quoted yields may vary depending on the images you are printing, the paper type that you are using, the frequency of your prints and environmental conditions such as temperature. During the initial printer setup, a certain amount of ink is used to fill the print head's nozzles, therefore the yield of the initial bundled set can be lower. ¹⁰Based on Epson calculations, the average cost per page saving and the average number of toner cartridges required to print the same number of pages as an Epson EcoTank "111" ink bottle. Comparison between the yield (A4 prints of ISO/IEC 19752) of the EcoTank "111" bottle and yield of the genuine consumables (IDC, Hardcopy Peripherals Consumables Tracker, 2020 shipments, published Q1 2021) used within the 10 best-selling 1-20ppm cartridge-based mono laser printers in France, Germany, Italy, Spain and UK (IDC, Quarterly Hardcopy Peripherals Tracker, 2020 shipments, published Q1 2021). Cost per page calculated by dividing the relevant bottle/cartridge average selling price as tracked by IDC by the yield. ¹¹Based on Epson calculations, the average power saving of the Epson EcoTank mono range of printers compared to the 10 best-selling 1-20ppm cartridge-based mono laser printers in France, Germany, Italy, Spain and UK (IDC, Quarterly Hardcopy Peripherals Tracker, 2020 shipments, published Q1 2021). Comparison based on the average power when printing/copying. Power consumptions taken from the manufacturers' official specifications ¹²Automatic set-up compatible with Windows 10, Windows 8, Windows 7, Windows Vista and Mac OS. ¹³AirPrint enables instant wireless printing from iPhone, iPad, iPod touch, and Mac without the need to install drivers or download software. ¹⁴For warranty details please check the product page on your local Epson website. ¹⁵Based on print volume of 100 A4 pages per month and the lowest yield produced from the included set of inks. Excludes photo and business models. ¹⁶In the ET-2830, ET-2840 and ET-4810 models the ratio of the amount of recycled plastic weight to overall plastic component weight of the hardware. The amount of recycled contents and recycled material varies depending on the model, manufacturing time and site. ¹⁷Based on Epson calculations, Epson EcoTank consumer home and home office printers use less energy compared to the average energy of the 5 best-selling A4 1-20ppm colour multi-function laser printers in France, Germany, Italy, Spain and UK (IDC, Quarterly Hardcopy Peripherals Tracker, 2022 shipments, published Q2 2023). Power consumption values as published in the manufacturers' official specifications. ¹⁸This means that due to the unique Micro Piezo technology, Epson printhead has been designed to be a permanent fixture of the printer and does not require regular replacement to maintain performance and efficiency. This however does not constitute a statement of additional warranty; the standard Epson warranty terms apply.

Apple, iPhone, iPad, iPad Air, iPad mini, iPod touch, Mac and OS X are trademarks of Apple Inc., registered in the U.S and other countries. AirPrint is a trademark of Apple Inc. IOS is a trademark or registered trademark of Cisco in the U.S. and other countries and is used under license. Wi-Fi and Wi-Fi Direct are registered trademarks of Wi-Fi Alliance®.

For more information please contact:



Home users: 0343 90 37766
 Business users*: 0871 42 37766
 Republic of Ireland: 01 436 7742

Or visit us at www.epson.co.uk/contactus

*10p per minute plus network extras.

Trademarks and registered trademarks are the property of Seiko Epson Corporation or their respective owners. Product information is subject to change without prior notice.