

Transform spaces with stunning visuals

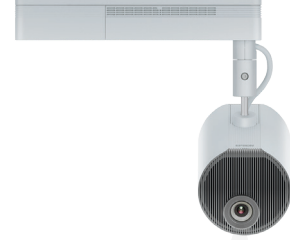


Make an impact with projection mapping

Inspire clients with stunning visual displays and attention-grabbing signage that re-invigorates your business environment.

Reclaim your display spaces and focus attention on your products and services more effectively by switching to signage projection solutions from Epson. Free your public spaces, waiting areas and product demos from the cumbersome black boxes required for LED and flat-panel displays. Instead, project boldly onto virtually any surface with high resolution and vivid colours, and change the content whenever you like with ease. Reduce waste with compact product designs and lower your environmental impact by using less power.

Epson's comprehensive product range, advanced installation options and impressive free software solutions provide a solution for every application. Whether it's driving customer engagement in retail, crafting memorable experiences in the hospitality industry or hosting one-of-a-kind executive events, Epson's product portfolio handles it all so you always create lasting impressions.



Captivate your customers

Whether you run a small boutique shop or a chain of hotels, making your space inviting for patrons can boost customer experience, improve your reputation and increase your earnings.

Projectors can be a simple way to make your environment more captivating. For example, in a hotel or guest house, they can be used to highlight the path to a room or leave a welcome message on the door for guests.

Epson projectors open up new ways of thinking about displaying information. Unlike traditional signage, projectors can bring objects to life and personalise the experience for every visitor. In a coffee shop, for instance, a projector can illuminate individual beverages on the countertop with graphics and details, so customers can distinguish their cappuccino from their friend's latte.



Go beyond traditional signage

Eliminate the constraints and costs of traditional signage. Epson's projector portfolio lets you turn your imagination into stunning visuals with minimal technical limitations.

Take advantage of versatile projection onto any shape or surface without losing image definition. Even windows can become interactive, transparent displays using specialised projection film and larger spaces can be transformed by blending multiple projectors that cover every inch of your canvas.

Breathe new life into retail, hospitality and public spaces with unconventional signage and interactive displays. Project without borders or bezels, using products that blend into the environment or conceal them to heighten their impact. There's no need to limit your creativity.





Focus your communications to maximise impact

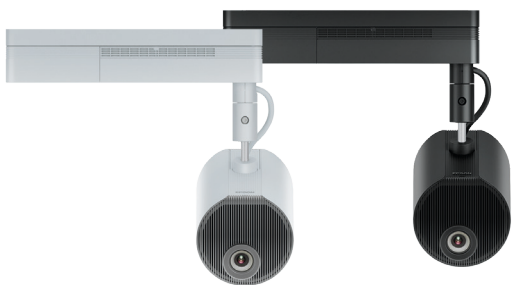
The LightScene range is designed for focused, experiential and informative signage.

Bring products and point-of-sale displays to life with feature highlights, atmospheric content and a call to action. Create 'phygital' experiences that merge the physical and digital worlds, leaving a lasting impression on visitors, clients or business partners.

Deliver information right where you need it, in a memorable format. Project imaginatively in the tightest of spaces without compromising results using our ultra-short-throw solutions.

Project onto any surface to grab attention

Our projectors will help your displays stand out from the crowd, enabling you to create innovative, experiential point-of-sale displays and environments that leave a lasting impression.



EV-110 / EV-115

Create amazing experiential visuals

2,200 lumens

Flexible installation – wall, ceiling, floor or lighting track

Up to 20,000 hours maintenance-free operation

Simple sensor integration to easily create interactive experiences

Built-in media player with network content upload

Attractive spotlight design



EB-L260F / EB-L265F

Create stunning borderless displays

4,600 lumens in a compact and discreet form factor

Flexible installation – wall, ceiling, floor or lighting track

Full HD resolution

Built-in media player with network content upload

New Arrival



EB-770F / EB-775F

Maximum impact in the tightest spaces

- 4,100 lumens brightness and native Full HD resolution
- Scalable ultra-short-throw display up to 150 inches
- Built-in media player with network content upload
- Compact and lightweight design



EB-800F / EB-805F

Create informative signage in bright spaces

- 5,000 lumens brightness and Full HD resolution
- Scalable ultra-short-throw display up to 130 inches
- Built-in media player with network content upload
- Edge blending functionality for even bigger displays

Create stunning displays and immersive environments

Upgrade your commercial signage and advertising with Epson projectors for a more interactive, adaptable and engaging experience. Use them to complement printed collateral, transform spaces or simply display striking standalone advertising.

Epson's projector range offers ultra high brightness solutions, in resolutions up to 4K, to suit a wide variety of installation environments. With impressive zoom capabilities and a range of lens options, the projectors are flexible enough to project in any environment. They can even be concealed, creating mysterious atmospheres or floating images that appear to be coming out of nowhere, as if by magic.

What's more, with reliable laser technology and a low-maintenance design, Epson projectors are long-lasting, cost-effective tools that you can trust.



Higher brightness, maximum impact

Explore the range of high brightness projectors that offer compact and flexible signage display solutions for retail, hospitality, corporate and public display.



EB-L700 Series

Create bright, compelling signage

- Compact 5,200 to 7,000 lumens projectors
- Wide manual lens shift for installation flexibility
- 4K Enhancement and HDR technology
- Built-in media player with network content upload



EB-PU1000 Series

Compact and flexible

- High brightness projection solutions - 6,000 to 10,000 lumens
- Optional lenses and motorised optics for advanced installation flexibility
- 4K Enhancement and HDR technology
- Optional camera for quick and easy set up and calibration



EB-PU2200 Series

Make a big, bright impact

Ultra-high brightness display solutions - 13,000 to 20,000 lumens

Compact and discreet projection solutions

Optional lenses and motorised optics for advanced installation flexibility

4K Enhancement and HDR technology

Optional camera for quick and easy set up and calibration



EB-PQ2000 Series

Bring your ideas to life with stunning clarity

4K resolution and HDR with 4K Crystal Motion technology

Ultra-high brightness display solutions - 8,000 to 20,000 lumens

The world's smallest and lightest 10,000 and 20,000 lumen 4K projectors¹

Optional lenses and motorised optics for advanced installation flexibility

Optional camera for quick and easy set up and calibration

Transform spaces with proven, powerful software

Great software allows you to harness the full capabilities of Epson projectors. Our range of free-to-download software provides powerful tools for projector installations, maintenance and content management.

Project your playlist content from external storage devices (like SD cards and USB drives) without a cable connection with the Epson Projector Content Manager. Customise your content seamlessly by adding custom shape filters, overlaying effects and scheduling.

Create original, dazzling content to liven up rooms, product displays, and spaces around you with the Epson Creative Projection app for iPhones and iPads. The app empowers you to combine videos, photos, text, existing pre-set filters or brand-new content from your mobile device – anytime and anywhere.

Monitor and control your projector fleet and perform scheduled commands with either Epson Projector Management software - our free centralised management solution, or with Epson Projector Management Connected - our new cloud-based management solution.

Transform large spaces by mapping, stacking and blending multiple projections with ease using the Epson Projector Professional Tool that is specially designed for high-brightness projectors.

Epson projectors are also compatible with third-party control systems, content management software and external media players.





Specials

Setting the highest standards

Epson understands that display solutions can be a significant investment, which is why every effort is taken to ensure our products exceed your expectations. From advanced technology to enhanced warranties, you're getting the maximum value for money with Epson.

Leading the class

Epson are world leaders in projectors², thanks to innovative 3LCD and laser technology, capable of producing images up to 3x brighter than rivals³.

Adapt to anything

Epson offer a range of accessories to ensure our projectors can fulfil the task flawlessly. From heavy-duty mounts to external cameras for calibrating and maintaining your display, your needs can, and will, be met.

Comprehensive support

Your peace of mind is key, so as well as building robust, low maintenance products that last, Epson provides a range of service and support options that cover your projectors, so you never have any reason to worry. You can even opt for a CoverPlus package, which extends the cover of your warranty for added peace of mind.



1. As of December 2023. Main unit without lens. 10,000lm and 20,000lm in accordance with ISO 21118.
2. 2001 to 2022, 500-lumen and above, excluding screenless TVs, Futuresource Consulting – Quarterly Projector Market Insights – Worldwide Analyzer CY22Q4.
3. Colour brightness (colour light output) in brightest mode, measured by a third-party lab in accordance with IDMS 15.4. Colour brightness will vary depending on usage conditions. Top-selling Epson 3LCD projectors versus top-selling 1-chip DLP projectors based on NPD sales data for January 2022 to December 2022.

* Warranty offers are not available for all countries. Please contact your local Epson representative.
For further information please contact your local Epson office or visit www.epson.eu/contact-us

Algeria +213 770 938 617 Austria 01 253 49 78 333 Belgium +32 (0)2 792 04 47 Czech +420 246 037 281 Denmark 44 50 85 85 Ethiopia +254700760366
Finland 09-3158 3267 France 09 74 75 04 04 (Cost of local call, operator charges may apply) Germany +49 (0) 2159/92 79 500 Greece (0030) 211 198 82 12
Hungary 06900 147 83 Ireland 01 436 7742 Israel (+972)-3-5751833 Italy 02-660321 10 (0,12 €/min) Kenya +254 207 904 566 Luxembourg +352 27860692
Middle East +9714 2677638 Morocco +212 520 134 040 Netherlands +31 (0)20 708 5099 Norway +47 67 11 37 00 Poland +48 22 295 37 25 (0,16 zł/min)
Portugal 707 222 111 Romania 0040 214025024 Russia (095) 777-03-55 Slovakia +421 232 786 682 Southern Africa +27 (0) 10 109 5320 Spain 93 582 15 00
Sweden +46 8 5051 3701 (Mobilsamtal – 0,99 kr/min, Lokala samtal – 0,30 kr/min, Utlandssamtal – 0,89 kr/min) Switzerland 022 592 7923
Tanzania +255 080 011 1014 Tunisia +216 9811 5564 Turkey (0212) 3360303 Uganda +256 205 491 148 United Kingdom 0871 42 37766
(+10p per minute plus network extras) West Africa +2349046648285

Trademarks and registered trademarks are the property of Seiko Epson Corporation or their respective owners.
Product information is subject to change without prior notice.