

Epson Document Capture

Document capture made easy



EPSON®

Capture

Epson's Document Capture Suite is a range of easy-to-use scanning solutions for capturing, storing and routing documents around your business and beyond.

Document Capture Pro (DCP) enables individuals to scan, save and share information around the business easily. Advanced features for naming, separating and routing documents makes scanning easy - and logical. Save and send files in common formats like PDF, PDF/A, Word, Excel, PPT, jpeg, tiff and other formats. Create simple job profiles for one-touch push scanning. Boost DCP with the Optional DCP Enhanced OCR for MFP to benefit from a high OCR recognition rate.

Document Capture Pro Server (DCPS) is a powerful, server based software for our network scanners and multi-function devices. DCPS allows administrators to centrally manage job profiles and devices. Monitor fleet performance without having to install software on individual computers. Use simple functions to scan documents intuitively and securely.

Document Capture Pro Server Authentication Edition (DCPS-AE) lets IT infrastructure managers control scanning tasks centrally, including user access rights and log-ins, job profiles, and even device management.

Enhance

Epson's Document Capture Pro Suite software includes features designed to enhance and improve an original document. This ensures that the best quality is achieved for future data integrity.

Auto-rotation reduces document preparation time by automatically adjusting scans so they are the right way up.

De-skew straightens documents so they are consistent and easy to read.

Enhanced text sharpens text for improved legibility.

Resolution can be adjusted via the scanner's dpi settings to enhance or reduce image detail as required.

Hole punch marks can be removed from the document automatically.

Dual output creates two digital files with one scan. Set different file formats and destinations, and even scan settings, with parameters customised by the user.



1D & 2D barcodes



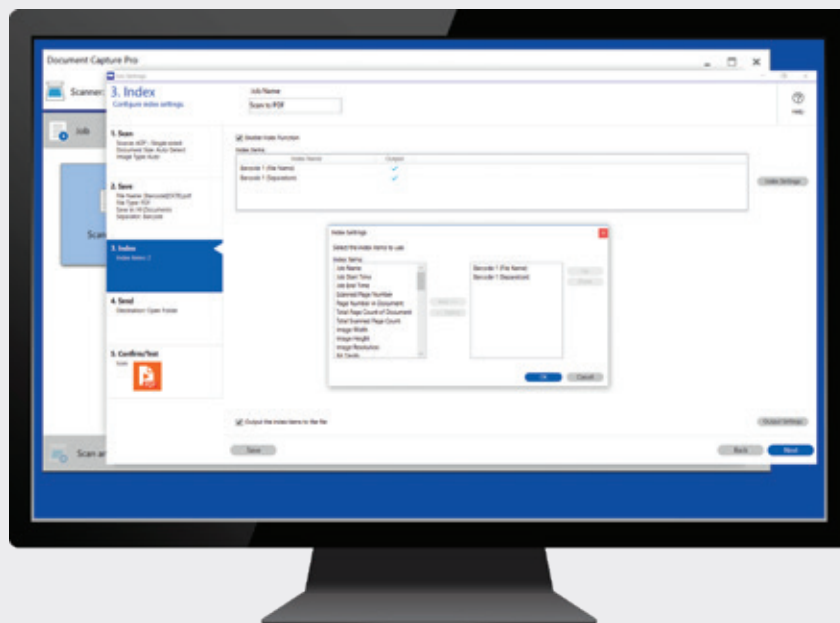
Correct document skew



Zonal OCR



Skip blank page



Text enhancement



Auto-rotation



Patch-code

Control every step with Epson's Document Capture Suite.



www.epson.eu/dcp

Authentication Edition

Separate



Manage

Automatically sort and separate batches of paper documents.

Optical Character Recognition (OCR)

With the ability to detect 40 languages types – Built-in OCR can separate documents from each other via pre-defined templates and use that data to automatically name files and folders. In addition create fully searchable files to easily find the information within scanned documents.

Fixed page separates each specified page into individual files.

Blank page allows sensitivity detection to be set to low, medium or high when separating documents.

Barcode scanning abilities capture and use a wide variety of barcodes, including 1D and 2D, to separate documents.

Patch code inserts codes into the batch of files, allowing easy separation of the documents.

Pre-defined templates allow commonly used forms to be pre-registered in advance, so a stack of documents can be saved into designated folders automatically.

File size lets users set a maximum file size.

Send and share the data stored locally or in the cloud.

Scan to standard destination such as email, folder, printer, FTP and SFTP.

More and more businesses choose to keep their documents safe and accessible online. As a result, there's a growing group of cloud storage providers to choose from.

DCP supports the established players, such as OneDrive, OneNote, SharePoint Online, Google Drive and Dropbox.

Output rich index data files for each scanned document or page.

Select from a wide range of available fields or pick up to 10 zones on a document for recognition.



Features

	Document Capture for Mac	Document Capture Pro	Document Capture Pro Server	Document Capture Pro Server Authentication Edition
Image enhancement and editing features				
Automatic document size detect, document rotation, paper and contents skew	✓	✓	✓	✓
Dynamic skip blank page	✓	✓	✓	✓
Background removal and edge fill	-	✓	✓	✓
Text enhancement	✓	✓	✓	✓
Auto area segmentation - Black and white picture enhancement	✓	✓	✓	✓
Remove hole punches - Top and bottom, left and right, or all edges ¹	✓	✓	✓	✓
Dual image output - Scan once with dual output	-	✓	✓	✓
Automatic Feeding Mode ¹	✓	✓	✓	✓
Scan, save and send - Intuitive user interface with simple mode option	✓	✓	-	-
Job profile creation - Up to 30 jobs for one touch scanning ²	✓	✓	✓	✓
Post scan desktop productivity features to edit scanned files	✓	✓	-	-
User management				
User Management & Authentication: LDAP support / Authentication via card, pin code or username & password	-	-	-	✓
Job personalisation per authenticated user	-	-	-	✓
Monitor Usage: Schedule report per user and group of users	-	-	-	✓
File save and send functions				
Supports all common file formats : JPEG, PNG, TIFF, PDF, PDF/A	✓	✓	✓	✓
Export documents to Searchable PDF ³	✓	✓	✓	✓
Export documents to DOCX, XLSX and PPTX formats ^{1 3 4 5}	✓	✓	-	-
Export documents to FTP, web folders, local and network folders, printer and email	✓	✓	✓	✓
Export to Google Drive	✓	✓	-	-
Export to Microsoft SharePoint Online, OneDrive, OneNote and Dropbox	-	✓	-	-
Create customised export connection via Application Programming Interface (API)	-	✓	✓	✓
Optional DCP Enhanced OCR (MFPs) for Office file formats and searchable PDFs	-	✓	-	-
Job creation functions				
Push scan with pre-registered job profiles	✓	✓	✓	✓
Job separation - Patch code, barcode ⁶ , blank page, zonal OCR	-	✓	✓	✓
Folder naming by barcode recognition ⁶ , zonal OCR and fixed page(s)	-	✓	✓	✓
Folder naming by job name, computer name, time stamp and page counter	-	✓	✓	✓
Monitored folders	-	✓	-	-
Device monitoring through web interface and notification mails	-	-	✓	✓
Machine Readable Zone (MRZ) scanning ⁴	-	✓	-	-
OS compatibility				
Windows 7, Windows 8/8.1, Windows 10, Windows 11	-	✓	-	-
Windows Server 2012/2012R2, Windows Server 2016, Windows Server 2019, Windows Server 2022	-	-	✓	✓
Mac OS X 10.8 or later	✓	-	-	-

1 Available on selected models.

2 Assignment job number to Scanners/MFPs depends on the panel type.

3 Supported Languages for Scanners: English, French, Italian, German, Spanish, Portuguese, Dutch, Czech, Polish, Hungarian, Danish, Finnish, Greek, Norwegian, Romanian, Slovak, Swedish, Turkish, Serbian (Latin), Serbian (Cyrillic), Bulgarian, Slovenian, Croatian, Lithuanian, Bosnian (Latin), Bosnian (Cyrillic), Latvian, Estonian, Macedonian, Japanese, Traditional-Chinese, Simple-Chinese, Korean, Russian, Ukrainian, Arabic, Hebrew, Thai, Malay, Vietnamese.

Supported Languages for MFPs: English, French, Italian, German, Spanish, Portuguese, Dutch, Czech, Polish, Hungarian, Danish, Finnish, Greek, Norwegian, Romanian, Slovak, Swedish, Turkish, Japanese, Traditional-Chinese, Simple-Chinese, Korean, Russian, Ukrainian.

Optional DCP Enhanced OCR for MFPs Supported Languages: English, French, Italian, German, Spanish, Portuguese, Dutch, Czech, Polish, Hungarian, Danish, Finnish, Greek, Norwegian, Romanian, Slovak, Swedish, Turkish, Serbian (Latin), Serbian (Cyrillic), Bulgarian, Slovenian, Croatian, Lithuanian, Bosnian (Latin), Bosnian (Cyrillic), Latvian, Estonian, Macedonian, Japanese, Traditional-Chinese, Simple-Chinese, Korean, Russian, Ukrainian, Arabic, Hebrew, Thai, Malay, Vietnamese.

4 Optional DCP Enhanced OCR license is needed for MFPs.

5 PPTX format not available on Document Capture for Mac.

6 Barcode Support: UPC_EAN_JAN, ITF, CODE39, CODABAR, CODE128, QR, PDF417, DataMatrix.

For further information please contact your local Epson office or visit www.epson.eu/contact-us

Algeria +213 770 938 617 Austria 01 253 49 78 333 Belgium +32 (0)2 792 04 47 Czech +420 246 037 281 Denmark 44 50 85 85 Ethiopia +254700760366
 Finland 0201 552 091 France 09 74 75 04 04 (Cost of local call, operator charges may apply) Germany +49 (0) 2159/92 79 500 Greece (0030) 211 198 62 12
 Hungary 06800 147 83 Ireland 01 436 7742 Israel (+972)-3-5751833 Italy 02-660321 10 (0,12 €/min) Kenya +254 207 904 566 Luxembourg +352 27860692
 Middle East +9714 2677638 Morocco +212 520 134 040 Netherlands +31 (0)20 708 5099 Norway +47 67 11 37 00 Poland +48 22 295 37 25 (0,16 zł/min)
 Portugal 707 222 111 Romania 0040 214025024 Russia (095) 777-03-55 Slovakia +421 232 786 682 Southern Africa +27 (0) 10 109 5320 Spain 93 582 15 00
 Sweden +46 8 5051 3701 (Mobilisamtal – 0,99 kr/min, Lokala samtal – 0,30 kr/min, Utlandssamtal – 0,89 kr/min) Switzerland 022 592 7923
 Tanzania +255 080 011 1014 Tunisia +216 9811 5564 Turkey (0212) 3360303 Uganda +256 205 491 148 United Kingdom 0871 42 37766
 (+10p per minute plus network extras) West Africa +2349046648285

Trademarks and registered trademarks are the property of Seiko Epson Corporation or their respective owners.
 Product information is subject to change without prior notice.

EPSON®