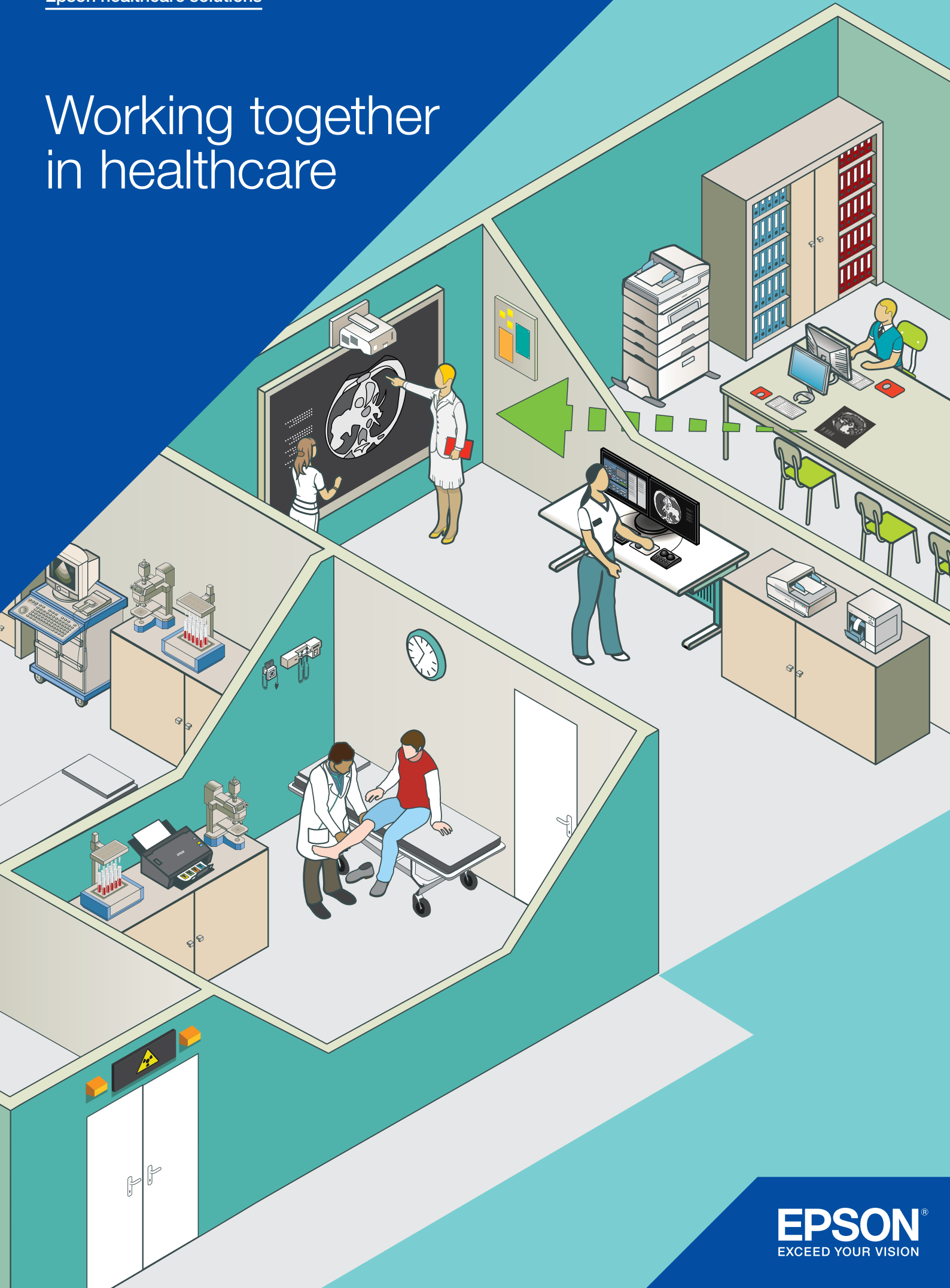


# Working together in healthcare



# Technology solutions for healthcare

At Epson, we understand that you're under pressure to improve collaboration and patient care at the same time as cutting costs and working more efficiently.

That's why we design technology that simplifies and streamlines your workflows, saving you time and resources. This frees up your staff to work across teams and solve problems faster, by bringing your people, places and information together in real time. Delivering a high performance with low intervention, Epson healthcare solutions let you focus on the most important person – your patient.

## Helping IT do more with less

Balancing reduced budgets with the need to provide highly reliable and secure systems, our solutions help you deliver a continuous system of quality care.

- Streamline patient flow and processes with unified devices that scan, project and print quickly, easily and securely, enabling faster patient care
- Collaborate across different sites with Epson ultra-short-throw display solutions, allowing staff to interact effectively for better training and information sharing
- Achieve consistent high-speed printing with Heat-Free Technology that requires no heat to warm up when it is switched on or awoken from sleep
- Process documents quickly and securely with Epson's document capture solutions, and share to collaborative work areas or cloud services at the touch of a button
- Improve workflows in healthcare using Moverio smart glasses; provide an innovative and comfortable method of improving both training and data visualisation by overlaying digital images in the user's field of view
- Make savings with our business EcoTank ranges which offer an ultra-low cost-per-page, thanks to high print yields, fewer consumables and cost-effective ink bottles. They also offer low power consumption and low maintenance.

## Get the full financial picture

Epson technology is designed to let you find cost savings without affecting organisational performance, freeing up budget for other areas and initiatives.

- Improve the clarity of vital information and reduce operational risks with our colour labels; make visual recognition faster without compromising patient care and safety
- Optimise patient care and maximise efficiency in demanding, high-volume departmental environments by scanning, saving, and securing test results with MFPs and scanners
- Store medical data securely, quickly and inexpensively with the Discproducer, which stores records for up to 100 years and eliminates the cost of paper storage
- Enable high-quality displays with installation projectors that are ideal for medical training in lecture theatres, capable of projecting images in Full HD up to 1000"

## Helping managers boost productivity

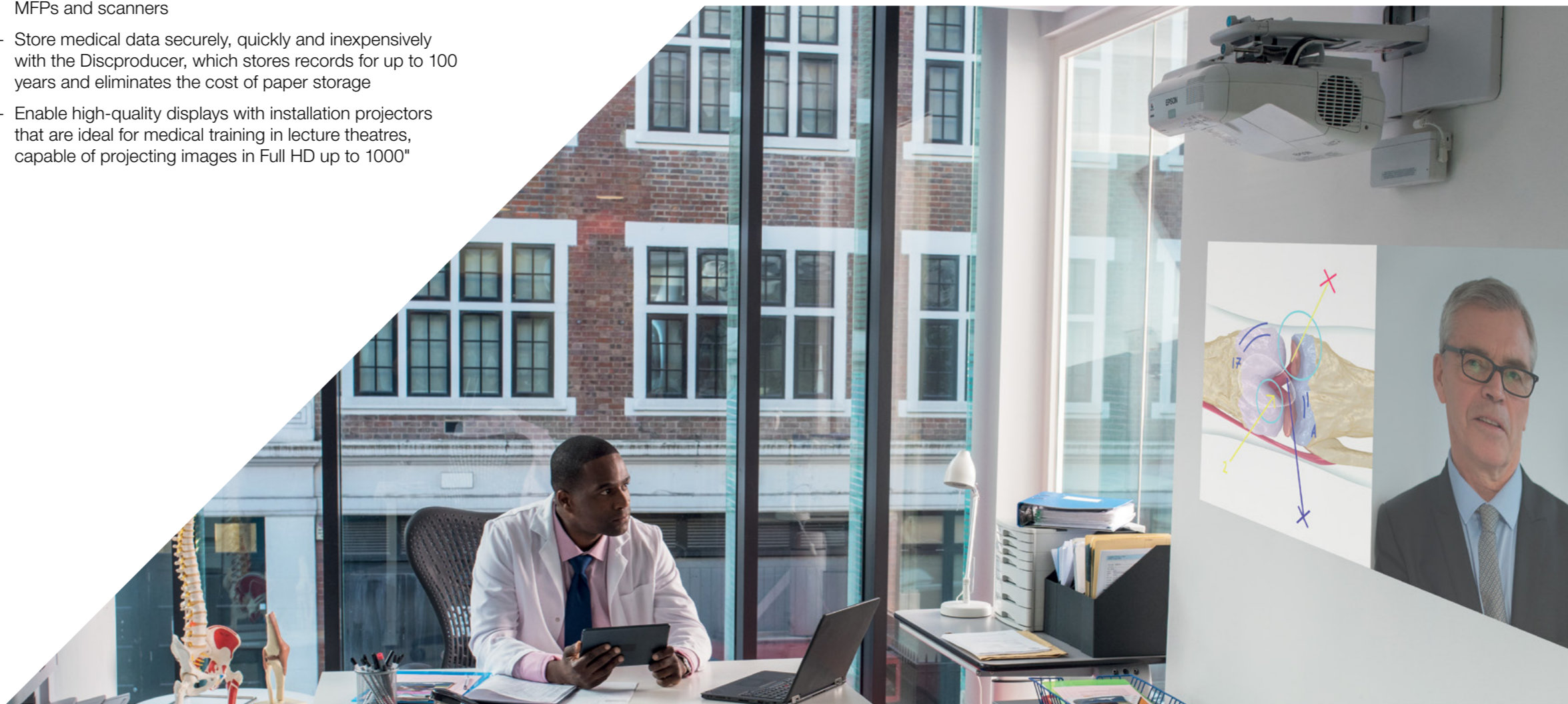
The efficiency of operations and facilitation staff can have a direct effect on patient care and the role of healthcare professionals. Work more effectively, streamline processes and boost accuracy with Epson technology.

- Meet your need for high productivity with WorkForce Enterprise – a fast, reliable and environmentally friendly departmental colour A3 multi-function printer (MFP) with optional finisher – and our business EcoTank ranges that deliver high print yield with low maintenance requirements
- Record every detail accurately with Epson graphics scanners, which recreate critical healthcare documents in exceptional detail, including negatives, photographs and X-rays
- Improve organisational processes with the LabelWorks printing system, and choose from a wide range of options to suit all printing requirements and budgets; ideal for stock management, filing and equipment tagging
- Organise vital information by creating and printing labels, tags and tickets quickly and on demand with ColorWorks
- Automate tasks with precision and reliability using Epson cleanroom robot systems for demanding medical and pharmaceutical environments

## How much could you save?

See how much you could save on printing with our savings calculator.

[www.epson.eu/eco-saving](http://www.epson.eu/eco-saving)



# Make patients your priority



### Save time and money on storage

Safely store medical data without the cost of paper storage. Many hospitals choose to install Epson CD/DVD publishers for patient CDs or archiving of patient data for reliability and ease-of-use – even in harsh environments.



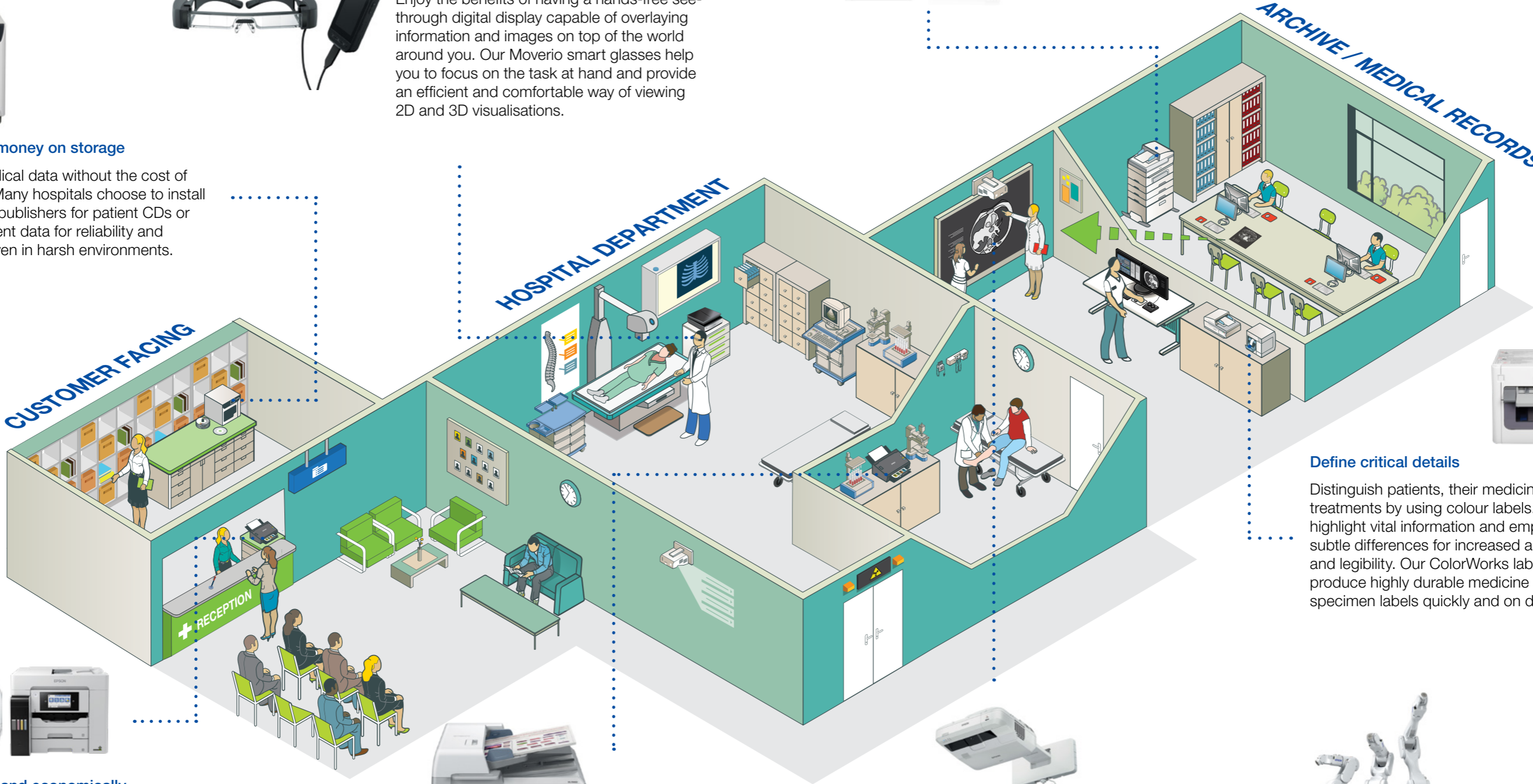
### Produce better results

Enjoy the benefits of having a hands-free see-through digital display capable of overlaying information and images on top of the world around you. Our Moverio smart glasses help you to focus on the task at hand and provide an efficient and comfortable way of viewing 2D and 3D visualisations.



### Print high volume at speed

Print high quality documents at superfast speeds of up to 100ipm<sup>1</sup>, and boost productivity with WorkForce Enterprise – a reliable and environmentally friendly departmental colour A3 MFP with optional finisher - and up to 25ppm in either colour or mono with our business EcoTank ranges.



### Print efficiently and economically

Spend less time waiting for prints, even at high volumes, while controlling access to sensitive information. Our low intervention WorkForce Pro and WorkForce Enterprise printers offer faster response times, long-lasting supplies and passcode protection, to support and secure your workflow rather than disrupt it. And our business EcoTank ranges give you high print yield, low maintenance and reduced energy consumption.



### Digitise medical documents efficiently

Digitise some of the most challenging paper records – medical documents. Epson’s high-speed A3 production devices offer the flexibility required to scan every document in the file, straight to collaborative work areas at the touch of a button.



### Simplify collaboration

Discuss patient cases without having to type up notes, and consult with remote specialists in real-time without leaving the workplace. Our interactive display solutions turn collaborative working into a more efficient digital process, with no need for flipcharts, whiteboards or flat panel displays.



### Keep up with demanding environments

As one of the pioneers in robotics, our robots work precisely and at breathtaking speed in many applications – often up to 24 hours a day, and without the risk of contamination from particle deposits.

### Define critical details

Distinguish patients, their medicines and treatments by using colour labels. Clearly highlight vital information and emphasise subtle differences for increased accuracy and legibility. Our ColorWorks label printers produce highly durable medicine and specimen labels quickly and on demand.



# Designed with healthcare in mind

## Achieve predictably lower costs with Epson Print Performance

Make printing easier and less resource-intensive with a fully managed print service that covers servicing and supplies for peace of mind.

- Reduce printing costs, and gain a full view of your investment and billing
- Receive replacements automatically when supplies run low
- Pay only for what you print
- Get clarity with a simple, single monthly invoice
- Choose the options that are right for you
- Achieve reliable continuous printing, and free your staff to focus on delivering the best care

## Increase productivity, reduce costs, and improve document security with Epson business imaging solutions

With tougher legislation, rising costs of providing quality care, and an environment where patient information and privacy must be protected, Epson can help healthcare organisations improve and accelerate their processes.

- Preserve patient privacy by authenticating, authorising, and reporting access and output of MFPs
- Avoid misrouting patient records and reduce medical errors with pre-defined capture processes
- Easily and securely scan patient records at the point of origin, reducing costly re-creation of lost documents

See the whole range of software solutions and system compatibilities from Epson and our partners at [www.epson.eu/bis](http://www.epson.eu/bis)

## Get more from your display with Epson Projector Management

Epson display solutions software allows you to control more than a thousand projectors from one central location, helping you to get the best from your technology estate while maintaining control of your entire projector fleet.

- Display content on any network-enabled projector from any location
- Project from multiple sources without switching the input source
- Display on multiple display solutions from one computer
- Check status and control display solutions remotely
- Send messages manually or automatically to one or more display solutions
- The dedicated colour mode is designed to show off the best greyscale range - perfect for viewing medical images such as X-rays (projector cannot be used for medical diagnosis)

## Project documents and photos wirelessly with Epson iProjection

Our intuitive mobile projection app for iOS and Android devices makes it easy to wirelessly project images and files from these devices via an Epson display solution with network availability. This lets you work easily with others without being constrained by small screens.

- Project images and documents in just a few steps
- Annotate and highlight over the projection for emphasis and clarity
- Display high-quality web pages with a fully-featured web browser

For further details of which solutions are available in your area please contact your sales consultant.

# More sustainable technologies

## Not only are we committed to sustainability in healthcare solutions, sustainability is at the forefront of all our product areas.

Our Heat-Free printhead technology reduces energy consumption by up to 83% compared to laser printers, requires fewer consumables, is less wasteful and much simpler to maintain. If all European businesses switched to Epson inkjet technology, we could save 1 billion kWh a year, equivalent to a €151 million energy saving and, more significantly, reduce carbon impact by over 410 thousand tonnes of CO<sub>2</sub>.

Our EcoTank inkjet printer is already delivering on its sustainable promise by using no cartridges – eliminating production, shipping and disposal impacts and creating only a tenth of the waste of traditional print models. As a result, to date we have saved around 1.6 million tonnes of plastic-based consumables through the sale of over 60 million cartridge-free EcoTank printers worldwide.

Our on-demand inkjet label printers can save businesses considerable amounts of energy, reduce massive material and ink waste and make labelling operations far more efficient and sustainable.

The use of projectors in video conferencing and for education is also an area where Epson, as global market leader, can contribute to sustainability. While the workplace re-organises itself into more virtual hubs and governments look to improve education for remote communities, the need for effective visual communications is accelerating. Epson projectors are designed to reduce power consumption and extend lamp life.

Our manufacturing solutions are also emerging as sustainable choices. Increased use of localised automation is resulting in less dependency on carbon-heavy offshore production. Robots are meeting the requirement for safe, socially distanced production, while at the same time allowing people to concentrate on more creative work.

Our Moverio augmented reality smart glasses are solving the challenge of conducting business in a virtual workplace with companies across Europe using Moverio glasses for remote technical assistance, significantly reducing the need for long distance travel and face-to-face contact.

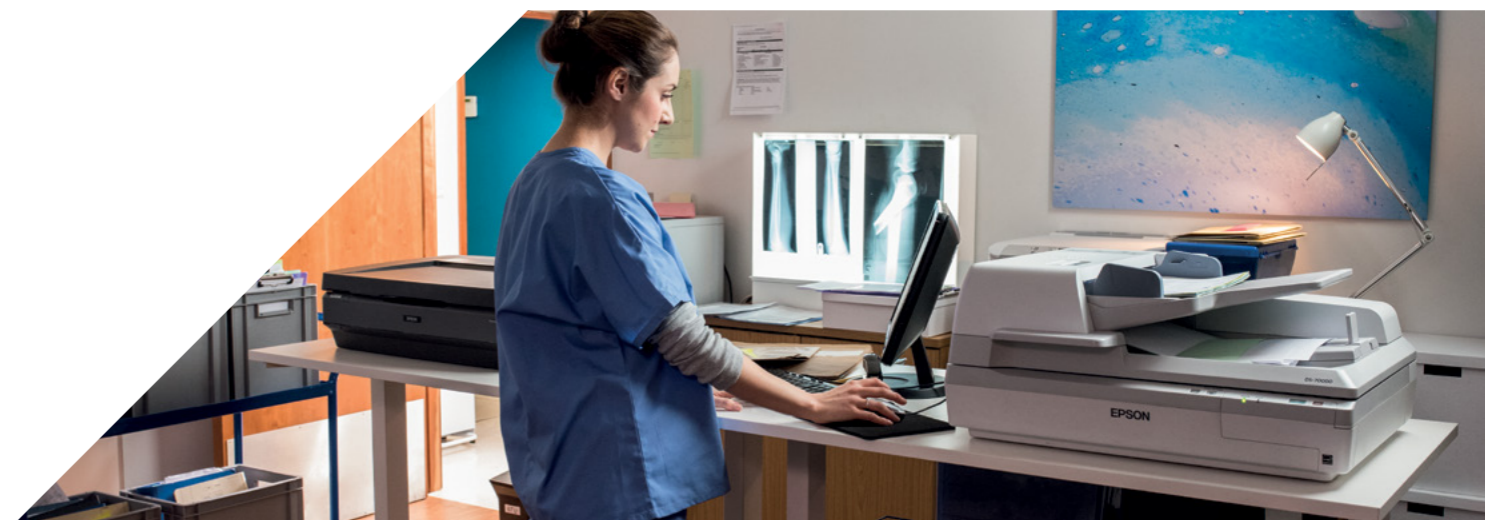
2021 saw the first sale of PaperLab in Europe, the world's only in-office secure paper recycler that closes the resource loop by turning wastepaper into new paper using virtually no water. More than this, our dry fiber technology on which Paperlab is based, is creating new opportunities for naturally derived (plastic-free) materials that have numerous applications in manufacturing, logistics and packaging.

Epson is working with partners to develop biomass plastics. Promoting the wider use of biomass plastics will contribute to the decarbonisation of society by replacing fossil-fuel -based resins, mitigating environmental impacts, and reducing carbon dioxide emissions.

Epson is well placed for all these new challenges. Sustainability is in our DNA. Our Japanese roots are embedded in a strong tradition of making exceptional products from finite resources. Almost 80,000 employees worldwide share our commitment to sustainability. There is always a limit to what one company can do and it will take close collaboration and partnership with like-minded companies and people who share our vision to achieve more sustainability, enrich communities and improve the quality of our lives.

Did you know that 10% of all healthcare spend is wasted? Our healthcare workflow infographic shows you how to stop that.

[www.epson.eu/healthcare](http://www.epson.eu/healthcare)



# Protect the planet's future

At Epson, we understand the importance of supporting a greener planet for future generations.

**Meet your environmental targets** and use up to 83% less energy with WorkForce Pro printers<sup>3</sup>

**Cut power consumption** with eco-mode on your interactive display solutions and extend lamp life

**Reduce your carbon footprint** by using scanners with no warm-up time, and reduce power usage with built-in ReadyScan technology

## See what you could save

Calculate the electricity and CO<sub>2</sub> savings our business printers could achieve in your healthcare environment with our calculator.

[www.epson.eu/eco-saving](http://www.epson.eu/eco-saving)

Up to  
**83%**

**less energy** than laser technology<sup>3</sup>

Up to  
**50%**

**faster** from ready compared to laser printers<sup>4</sup>

Up to  
**96%**

**fewer used consumables** than laser printers<sup>5</sup>

<sup>1</sup> Typically 45-55ppm laser printers use 1500W, the WorkForce Enterprise has a low power consumption of 180W – 320W and prints at up to 100ppm.

<sup>2</sup> Calculated using standard conversion of 0.233 kg of CO<sub>2</sub>e per kWh of electricity.

<sup>3</sup> Based on Epson calculations, the Epson WorkForce Pro WF-CB190DW uses 83% less energy than the HP Color LaserJet Enterprise M750dn, the highest-selling model in the A3 colour single-function 21-30ppm printer segment (IDC, Quarterly Hardcopy Peripherals Tracker, Q4 2015 to Q3 2019 shipments, published Q2 2020). Methodology based on 'Typical Energy Consumption', defined under and/or simulated with reference to the ENERGY STAR test procedure and presented in kWh per year.

<sup>4</sup> Based on Epson calculations, Epson business inkjet time-saving calculated by comparison to business laser devices' average lowest "Print/Copy time" ("from Previous Job", "from Ready State" or "from Sleep State") as reported by ENERGY STAR, added to the time taken to print at maximum speed the remaining pages in an average sized office print job and multiplied by the average number of print jobs per year, according to Keypoint Intelligence. Laser printer models identified using IDC, Quarterly Hardcopy Peripherals Track-er, Q3 2016 to 2020 Q2 shipments, published Q2 2020.

<sup>5</sup> Storage space comparison based on Epson calculations of storage space requirements for packaged consumables sufficient to print 6,000 pages on 12 SFP and MFP (3-in-1) printers selected from among the top-selling 50% of A4 monochrome laser printers (below-20ppm class) listed in IDC Worldwide Quarterly Hardcopy Peripherals Tracker 2019Q2 data FY17 results. Average toner package unit volumes and yields for each model were calculated by Epson using toner package dimensions and yields published by the manufacturer for each model (as of August 2019). Actual size and number of toner cartridges required varies by laser printer model. EcoTank consumables quoted yields are simulated figures calculated by Epson based on ISO/IEC24711 methodology using ISO/IEC19752 test pat.

<sup>6</sup> 2001 to 2020, 500-lumen and above, excluding screenless TVs, Futuresource Consulting – Quarterly Projector Market Insights – Worldwide Analyzer CY20Q4.

\* Warranty offers are not available for all countries. Please contact your local Epson representative.  
For further information please contact your local Epson office or visit [www.epson.eu/contact-us](http://www.epson.eu/contact-us)

Algeria +213 770 938 617 Austria 01 253 49 78 333 Belgium +32 (0)2 792 04 47 Czech +420 246 037 281 Denmark 44 50 85 85 East Africa (+254) 734 354 075  
Finland 0201 552 091 France 09 74 75 04 04 (Cost of local call, operator charges may apply) Germany +49 (0) 2159/92 79 500 Greece (0030) 211 198 62 12  
Hungary 06800 147 83 Ireland 01 436 7742 Israel (+972)-3-5751833 Italy 02-660321 10 (0,12 €/min) Luxembourg +352 27860692 Middle East +9714 2677638  
Morocco +212 520 134 040 Netherlands +31 (0)20 708 5099 Norway +47 67 11 37 00 Poland +48 22 295 37 25 (0,16 zł/min) Portugal 707 222 111  
Romania 0040 214025024 Russia (095) 777-03-55 Slovakia +421 232 786 682 Southern Africa +27 (0) 10 109 5320 Spain 93 582 15 00 Sweden +46 8 5051 3701  
(Mobilsamtal – 0,99 kr/min, Lokala samtal – 0,30 kr/min, Utlandssamtal – 0,89 kr/min) Switzerland 022 592 7923 Tunisia +216 9811 5564 Turkey (0212) 3360303  
United Kingdom 0871 42 37766 (+10p per minute plus network extras) West Africa (+234) 8020727843

Trademarks and registered trademarks are the property of Seiko Epson Corporation or their respective owners.  
Product information is subject to change without prior notice.



**EPSON**  
EXCEED YOUR VISION