

# Epson at FESPA 2025

Interactive stand guide

**FESPA**  
GLOBAL  
PRINT EXPO

Berlin  
6 - 9 May 2025



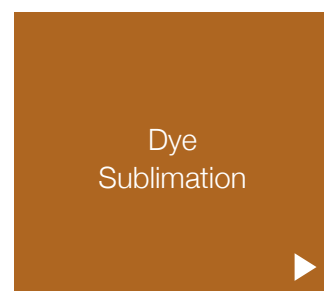
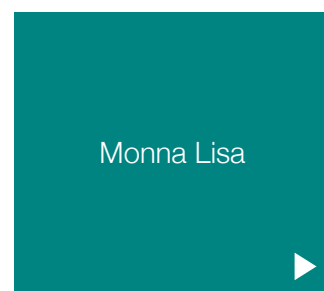
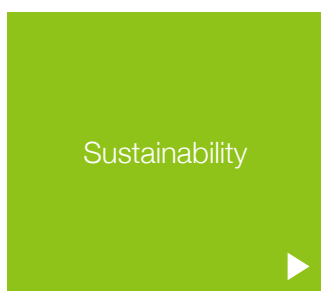
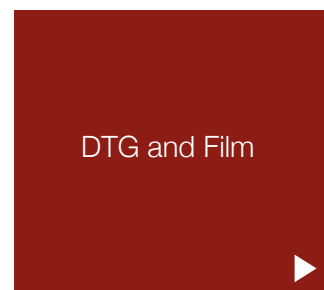
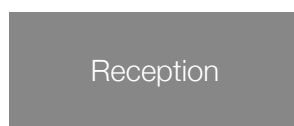
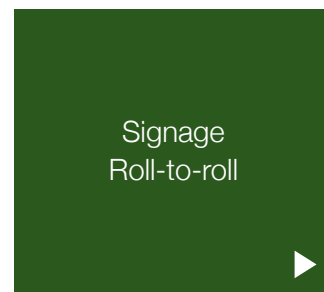
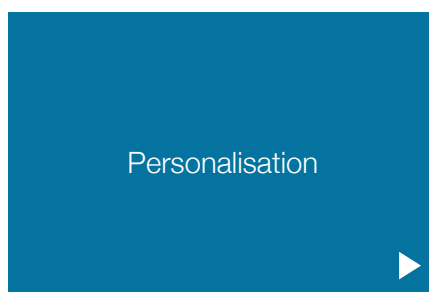
**EPSON®**



# Technology that delivers exceptional quality

Get an exclusive first look at our new and recently launched products on display at FESPA Berlin. We're excited to showcase our latest innovations and cutting-edge technology designed to meet all your printing needs.

Click on the sections below to discover more about our new products and advancements.



# Personalisation

For small businesses operating with limited space, our cutting-edge digital printing technology provides compact, entry-level products designed to produce a diverse array of stunning, high-quality, personalised items. Whether you're looking to create custom apparel, unique promotional materials, or bespoke gifts, our innovative solutions ensure you can achieve professional results without the need for extensive space or resources.

Explore our full range of products and discover how you can elevate your business with ease. Be inspired by the possibilities today at FESPA.

[Learn more](#)



Menu



## SureColor F1000

Epson's first entry-level hybrid direct-to-garment and direct-to-film printer, capable of printing on both dark and light fabrics. Ideal for hobbyists, retailers, and small businesses, this cost-effective solution offers flexibility to print on various fabric types.

Its compact design is perfect for small workspaces, making it easy to install in retail environments. The SC-F1000 is user-friendly and features intuitive, accurate, and high-quality printing.



Additionally, Epson's GarmentCreator2 software enhances flexibility and productivity with presets for quick and easy DTG/DTFilm printing.

[Learn more](#)

## SureColor V1000

The A4 UV flatbed printer is designed to meet the needs of small businesses in the promotional goods industry. Highly compact and affordable, the SC-V1000 can print on almost any hard surface, making it ideal for creating promotional and personalised items.

It will appeal to photo-retailers, small goods manufacturers, e-commerce printers, and visitor attractions. Designed to be affordable, it's easy to operate and maintain.

With 6 colours (CMYK plus white and varnish), it produces precise and detailed images that can be easily customised.

The SC-V1000 also supports Braille printing, enhancing accessibility and expanding creative possibilities.

[Learn more](#)





## SureColor V2000

Print larger substrates in high quality with stunning varnish effects using the SureColor V2000. This addition to the Epson UV lineup is a desktop A3 UV flatbed printer that includes all the features of the SureColor V1000, including Braille printing, plus an extended 10-colour ink set and the capability to print up to A3 size. It also maintains the same easy-to-use, low-maintenance design and features.



## SureColor F100

A compact dye-sublimation printer designed to expand business opportunities with high-quality printing on a wide range of gifts and promotional goods. Epson's PrecisionCore MicroTFP printhead and LUT ensure quality and consistency for promotional items and rigid substrates.

Offering fast turnaround times and a low total cost of ownership (TCO) for small businesses.

It requires no specialist knowledge to set up, operate, or maintain. The 140ml ink bottles provide a cost-effective alternative to cartridge-based inks, allowing businesses to keep running for longer.

[Learn more](#)



Menu



# DTG and DTFilm

Epson's Direct-to-Garment and Direct-to-Film printers deliver high-quality, vibrant prints directly onto garments and onto film for transfer onto various fabrics, offering detailed and durable prints on materials like cotton and polyester, ideal for custom apparel.

They use advanced Epson technologies to ensure stunning clarity and colour accuracy, backed by world-class service and support.

[Learn more](#)



Menu





## SureColor G6000

A reliable roll-to-roll solution for high-quality fabric printing, using Epson's PrecisionCore technology for vibrant, durable prints with excellent colour accuracy. Auto-maintenance features like white ink circulation and a fabric wiping system reduce downtime and enhance productivity.

Designed for versatility, the SC-G6000 prints cost-effectively onto film for transfer onto various fabrics, from natural to synthetic materials. It is easy to set up and use, featuring an intuitive touchscreen and bundled with Epson EdgePrint Pro software for quick setup and immediate production. Certified for Oeko-Tex Eco Passport and GOTS approval, it ensures safe and sustainable printing.

With its compact design, the SC-G6000 is ideal for businesses looking to extend their textile printing capabilities. It offers high productivity with minimal maintenance, thanks to features like the white ink circulation system and high-capacity ink pouches, delivering stunning quality and reliability for applications ranging from garments and accessories to promotional materials.

**[Learn more](#)**





## SureColor F2200

The SureColor F2200 Hybrid DTG/DTFilm printer increases productivity by up to 35% vs the SureColor F2100, thanks to the new PrecisionCore MicroTFP printhead. POL (Part Over Lap) reduces banding, even in lower pass printing. Automatic carriage height adjustment reduces manual adjustment by the user. It also features a 4.3-inch touchscreen, transparent lid and internal light, allowing the operator to easily view and check printing status.

Epson's bundled GarmentCreator2 software, includes presets for fast, easy printing by DTG and DTFilm.

[Learn more](#)



# Signage – Roll-to-roll

We are excited to showcase our new eco-solvent printer range for the first time at FESPA!

Ideal for producing high-value signage and vivid displays, as well as specialist applications such as wallpaper and vehicle wraps.

We have the perfect printer to match your needs.

[Learn more](#)



Menu



## SureColor S9100

Building on the heritage of Epson S-Series printers, the high-performance, 64-inch eco-solvent SC-S9100 boasts superior performance and is perfect for applications such as signage and graphic printing. It features an 11-colour UltraChrome GS3 ink system, including a newly added green to provide vibrant prints with a wide colour gamut. This extended range delivers vibrant, accurate prints with enhanced colour precision, on a variety of media with fewer passes, ensuring both quality and speed.

With increased productivity\* and user-replaceable printhead, it ensures faster output, minimal downtime, and high precision for professional graphics and signage.

Whether you're printing signage, graphics, or other large-format jobs, the SC-S9100 delivers outstanding speed without compromising on quality. Engineered by Epson for maximum efficiency, offering a 10%\* productivity boost - further enhanced by the printer's advanced drying system, which reduces downtime and streamlines workflow by ensuring that prints are fully cured and ready for handling almost immediately.

\*Compared to predecessor model, SC-S80600.

**[Learn more](#)**

Menu





## SureColor S8100

Building on the same heritage of Epson S-Series printers, the high performance, high-productivity 64-inch eco-solvent SC-S8100 excels in high-production environments and is perfect for applications such as signage and graphics printing. It features a 6-colour UltraChrome GS3 ink system, including CMYK plus Light Cyan and Light Magenta, which reduces banding. This extended range delivers vibrant, accurate prints with enhanced colour precision on a wide range of media with fewer passes, ensuring both quality and speed.

A new hot swap function contributes to increased productivity, which has increased by approximately 11%-30% in the same Pass Mode\*. With a user-replaceable printhead, the SC-8100 ensures faster output, minimal downtime, and high-precision, high-production printing for professional graphics and signage.

Whether you're printing signage, graphics, or other large-format jobs, the SC-S8100 delivers outstanding speed without compromising on quality. Engineered by Epson for maximum efficiency, it is further enhanced by the printer's advanced drying system, which reduces downtime and streamlines overall workflow by ensuring prints are fully cured and ready for handling almost immediately.

\*Compared to the predecessor model, SureColor S60600 Series.



## SureColor S7100

Building on the legacy of Epson's SureColor S40600s series, the SC-S7100 is ideal for signage printing. Designed to optimise production and efficiency while delivering exceptional quality, reliability, and ease of use. Boasting advanced features, including a new PrecisionCore Micro TFP printhead that reduces banding and NVT to prevent nozzle clogging. It offers up to 28.5% productivity for film media and higher productivity across all main media types.\* The larger 800ml CMYK ink packs reduce handling time, further enhancing efficiency.

The SC-S7100 also features a large 4.3-inch touch panel and advanced media handling to improve usability.

\*Compared to the predecessor model, SureColor S40600 Series.





## **SureColor SC-R5000L**

Explore Epson's SureColor-R5000 series, featuring UltraChrome RS ink for unparalleled versatility in substrate support. Tailored for signage, professional graphics, design agencies, and specialised production plants, these printers deliver outstanding results. The odourless ink expands usability to sensitive environments such as schools, hospitals, and hotels, as well as outdoor applications demanding maximum durability.

**[Learn more](#)**



# Dye Sublimation

Printing textiles has never been easier with our advanced dye-sublimation technology. Ideal for applications ranging from sportswear to home décor, our printers offer vibrant colours, reduced graininess, and user-friendly features like large touchscreens and easy maintenance access. Experience them on stand today.

[Learn more](#)



Menu





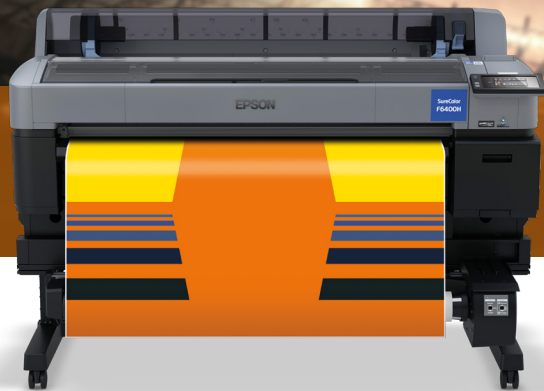
## SureColor F9500/H

Printing textiles is now easier than ever thanks to this outstanding 64-inch dye-sublimation printer featuring an extended colour gamut (CMYK plus 2 optional ink configurations of Fluorescent Pink and Fluorescent Yellow (FpFy), Light Cyan and Light Magenta (LcLm), or Orange and Violet inks (OrVi). SC-F9500H delivers superb and reliable quality, in a space-efficient design. An increased printhead bandwidth helps to increase productivity and high-capacity, hot swap ink packs help reduce downtime.

The SureColor F9500H is a versatile 64-inch dye-sublimation printer designed for applications ranging from sportswear to home décor. Built with PrecisionCore technology, it offers an extended colour gamut, reduced graininess, and vibrant fluorescents.

It features automatic nozzle detection, an increased printhead bandwidth, and 1.6L hot-swappable ink packs for higher productivity. Its compact design is ideal for space-restricted areas, and the large touchscreen and Epson Cloud Solution PORT enhance user-friendliness. It's compatible with all major third-party software.

**[Learn more](#)**



## **SureColor F6400/H**

This 44-inch, 6-colour dye sublimation printer has been designed for textile producers, promotional goods businesses, and photographic studios. It offers an extended colour gamut with options for Fluorescent Pink and Yellow (FpFy), Light Cyan and Magenta (LcLm), or Orange and Violet inks (OrVi), allowing businesses to achieve a wider colour range, reduce graininess, or print true fluorescents.

User productivity is enhanced by a large touch screen and easy-to-access maintenance area, along with 45% larger ink packs that reduce downtime and waste. The printer provides a complete solution with harmonious components, easy installation, a bundled take-up reel, and enhanced durability for improved ROI. The low total cost of ownership is achieved through easy user access and reduced downtime.

**[Learn more](#)**



# Monna Lisa

Epson's Monna Lisa series represents the pinnacle of digital direct-to-fabric printing technology. These printers are designed for high-speed, high-quality textile printing, featuring advanced PrecisionCore printheads that deliver exceptional detail and colour accuracy. With user-friendly features, robust support systems, and eco-friendly inks, the Monna Lisa series ensures reliable, efficient, and sustainable production for a wide range of fabrics.

Come and speak to our product experts to learn more about how Epson Monna Lisa printers can transform your textile printing needs.

[Learn more](#)



Menu



# Signage - UV Flatbed

Our UV flatbed printer is perfect for sign and display professionals looking to expand their product range. It prints on a wide range of materials and rigid substrates, making it ideal for retail and outdoor signage, window displays, hoarding panels, packaging, 3D promotional items, and decorative printing.

[Learn more](#)



Menu





## SureColor V7000

The SureColor V-Series UV flatbed printer is perfect for printing on most rigid media. With a 10-colour ink set, it produces high-quality prints for outdoor signage, promotional goods, and more.

Built for high productivity, it has a maximum print area of 2.5m by 1.25m x 80mm (h). It offers automated adjustments for seamless usability, including printhead height adjustment and a crash sensor. An ionizer ensures precise ink placement, and the white ink circulation system reduces waste.

With UltraChrome UV 10-colour ink, the SureColor V7000 delivers vivid prints. The white and varnish inks create a wide variety of textures and effects for many applications, delivering stunning results.

**[Learn more](#)**

# Photo and Poster Production

We are excited to present our latest advancements in photo and technical printing technology. Our innovative solutions are designed to enhance productivity, image quality, and user experience across various applications, from photo labs and copy shops to corporate environments and retail. With features like advanced ink sets, high-speed printing, and user-friendly interfaces, our offerings cater to diverse needs, ensuring superior performance and convenience.

At FESPA we are showcasing the recently announced SureColor P7300.

[Learn more](#)



Menu





## SureColor P7300

The SureColor P7300 is a 24-inch photo printer designed to meet the needs of the retail photography, proofing, graphic, signage, and fine art markets. This model succeeds the successful SC-P6000 and features significant upgrades, including faster printing speeds and Epson's 2.64-inch PrecisionCore printhead, ensuring exceptional image quality.

Incorporating an advanced 10-colour UltraChrome PRO10 ink set, including violet, available in 350ml and 700ml cartridges. Broadening the colour gamut and improving black density through Black Enhance Overcoat technology, resulting in richer blacks and better contrast.

Designed to deliver crisp, detailed prints at high speeds, making it an ideal choice for professional photographers and businesses looking for superior image quality and user-friendly operation.

## SureColor P9300

All of the same great features as the SC-P7300, but with the ability to print up to 44-inch.



## SureColor P20500

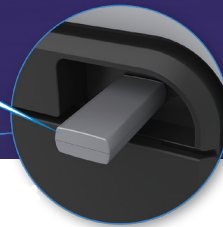
The SC-P20500 is a large format 64-inch printer that delivers increased productivity and image quality for photo labs, copy shops, and corporates. Ideal for producing high-quality fine art photography, posters, and indoor signage.

Featuring enhancements such as a 12-colour ink set (including orange, green, and violet) and a switchable black-enhanced overcoat mode, which provides improved contrast, better tonality, and bronzing reduction on glossy media.

[Learn more](#)







## SureColor T5700DM

Our Epson SC-T5700DM is a large multi-function 36-inch printing solution for offices, retail and high PV printing environments.

Delivering increased productivity and professional image quality for a wide range of industrial and commercial applications for copy shops, offices and front of house retail. Ideal for printing, scanning, copying poster advertisements, CAD and more.

The Fiery M600 Station is designed for customer-facing printing, allowing users to print directly from their USB drives, mobile devices, and cloud storage at a user-friendly tablet kiosk. Secure card payment options are available for convenient transactions.

[Learn more](#)



# Colour Management

Discover a variety of complementary software and process management tools, crafted to seamlessly integrate with Epson printers.



Menu



## SD-10 spectrophotometer

Thanks to an innovative mobile app, you can build colour libraries and palettes, find similar pantone colours and record measurements. SD-10 gives you colour confidence, helping you identify whether your Epson printer, media and ICC profile can reproduce a measured colour.

[Learn more](#)



## SD-10 automated scanning table

This portable, automatic colour-reading table makes the creation of media profiles quick and simple, and delivers automated media verification and calibration.

The combination of the SD-10 automated scanning table, SD-10 spectrophotometer and Edge Color Lite can create a profile by scanning 379 patches in under 5 minutes.

[Learn more](#)



## Epson Cloud Solution PORT

Epson Cloud Solution PORT is a platform for cloud-based services that supports Epson large format and commercial printers.

You'll be able to monitor equipment across several sites, or several printers from one site, from the production floor or remotely, and achieve greater control. The first service offered on the platform is Production Monitor, which will examine production status in real time.

[Learn more](#)



Menu



# Sustainability

Epson is dedicated to creating sustainable solutions, our innovative technologies focus on reducing environmental impact through energy-efficient designs and minimising waste.

Speak to our experts on stand to learn more about how we are committed to developing more sustainable technologies.

[Learn more](#)