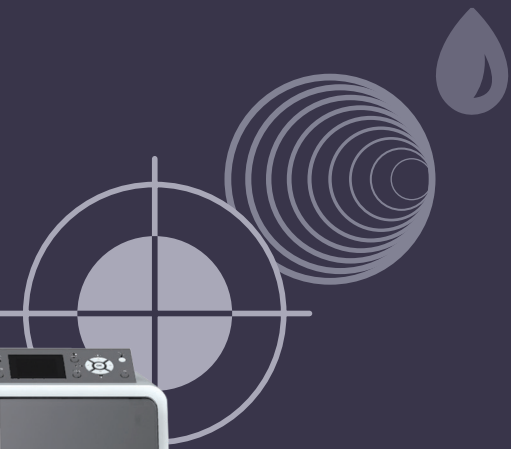


EPSON STYLUS PRO WT7900



EPSON ULTRACHROME
HDR INK
WHITE

EPSON®
EXCEED YOUR VISION

JUST ADD WHITE

Add new clarity and colour to package proofs with the cost-effective, high-productivity Epson Stylus Pro WT7900. This 24" printer uses white ink to create eye-catching spot colours, smooth white gradations and precise overlays, giving you a genuine alternative to digital proofers.

Epson UltraChrome HDR with White Ink

The nine-colour ink set gives you superb print quality, with a wide colour gamut and excellent white density. The white ink allows you to print on transparent or opaque substrates, and as the world's first water-based white ink, it's environmentally friendly too.

White tinting

Precise colour control allows you to add subtle colour tints to white in order to simulate the white ink used in the actual printing process. The results are highly accurate colour proofs.

Surface and reverse print modes

These two print modes satisfy a wide variety of proofing requirements. The surface print mode uses white first, then the colours and is ideal for either transparent or opaque media. The reverse mode prints the white last, for rich, vivid proofs on transparent media that can be viewed from the non-printed side.

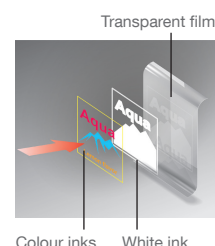
EPSON ULTRACHROME
HDR^{INK}
WHITE

Exclusive Epson ClearProof™ Film



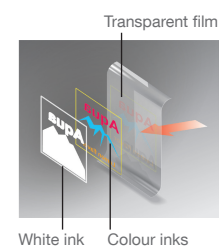
This exclusive 17" or 24" roll media is the clear film media of choice for high-quality proofing applications. With its increased ink adherence, it maximises quality even when you're printing vivid or deep colours that require high ink duty.

Surface print mode



Viewed from printed surface

Reverse print mode



Viewed from behind printed surface



Ease of use

The large 2.5" colour LCD control panel makes it easy to check printer information and alerts you to required maintenance such as ink agitation

2 sizes of individual, high-capacity, pressurised ink cartridges – 350 and 700 ml for colours, and 350 ml for white – to match your workflow, maximize print time and add peace of mind to overnight printing

Cut media quickly, accurately and automatically with the built-in rotary media cutter

Easy paper handling – new flange-type roll media holder makes changes fast and easy and means you can change paper rolls in a much smaller space

The new Film Stacker carefully collects and stacks proofs to prevent damage to the printed surface and gives you perfect results every time

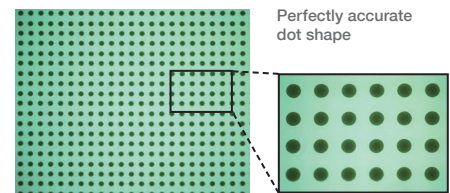
SPEED AND EFFICIENCY

The Epson Stylus Pro WT7900 delivers accurate and reliable prints for professional packaging proofs, production mock-ups and comprehensive layouts. It combines the finest quality output and excellent colour stability with fast drying times for high-speed results.

Consistent quality, easy maintenance

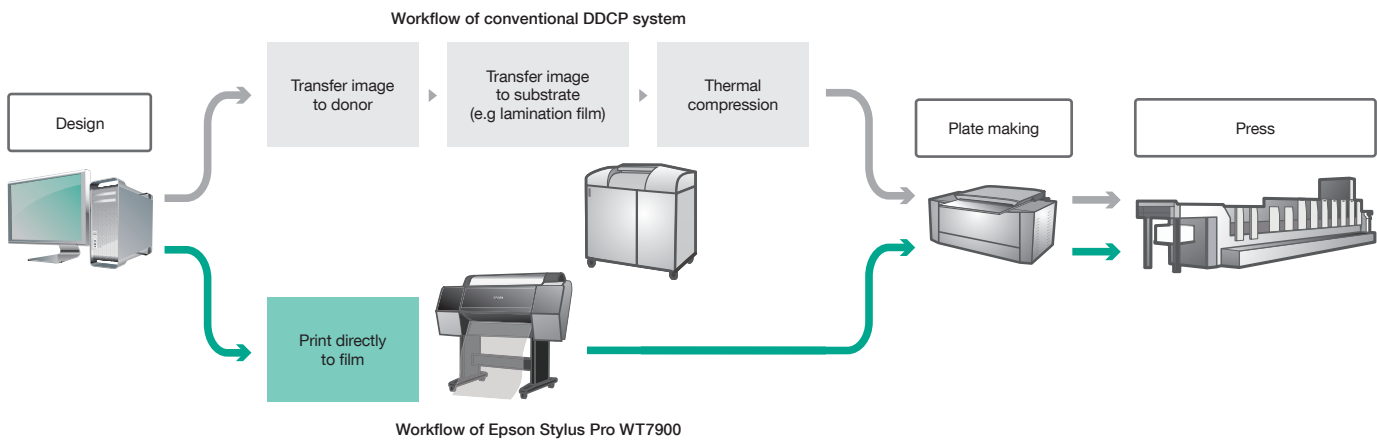
Epson white ink needs less agitation than normal inks because the pigment in the ink solution stays suspended for longer. However, the LCD panel will alert you when this is needed. Also, the Auto Nozzle Check system automatically verifies nozzle status and cleans the printhead, so you can print more reliably for longer. The system uses no media, takes less than 15 seconds and can even run between unattended print jobs.

High productivity and precision



The MicroPiezo™ TFP printhead is specially designed for use with high viscous ink. It optimises dot shape, size and accuracy for unsurpassed image quality, and maximises print speed too. Also, the ultra-small ink droplets produce white gradations previously unavailable from a package proofer.

Seamless integration, simplified workflow



This printer is designed to fit effortlessly into the current proof-to-print workflows of major RIP and workflow systems providers. It dramatically reduces the workflow process compared to digital proofers by printing directly to film without laminating. The optional SpectroProofer makes things even simpler by automating a range of processes such as ICC profile creation and proof certification.

With its small footprint, the Epson Stylus Pro WT7900 fits easily into office environments, which is ideal for remote satellite proofing. It also gives you the added flexibility of printing standard large format prints.

PRODUCT SPECIFICATIONS

PRINT TECHNOLOGY	Auto Head Alignment technology, Auto Nozzle Check technology, Epson new LUT technology, Epson MicroPiezo™ TFP
Printhead Nozzle configuration Print direction	360 nozzles x 10 lines Bi-directional printing, uni-directional printing
PRINT QUALITY	2880x1440 dpi (standard printing), 1440x1440 dpi (white ink printing), Epson Variable-sized Droplet Technology
Maximum resolution	3.5 pl
Minimum ink droplet volume	
INK SYSTEM	Epson UltraChrome HDR with White Ink technology
Ink	8 Colour pigmented ink + white (cyan, vivid magenta, yellow, photo black, light cyan, vivid light magenta, orange, green, white + 2 x cleaning cartridges)
Colours	11 slots
Slots	White: 350 ml, colour: 350 ml/700 ml, cleaning cartridge: 150 ml
Ink cartridge capacity	
PRINT SPEED	Surface print mode (720x1440 dpi) on A2: max 9.8 mins (bi-directional)*
PAPER HANDLING	Friction feed
Paper feed method	254 mm – 610 mm
Roll dimensions	210 mm – 610 mm
Cut sheet	2" -core: Max ø 103 mm (~45m) / 3" -core: Max ø 150 mm (~202m)
Roll paper	Roll paper: 406 mm – 610 mm, Cut Sheet: 210 mm – 610 mm
Printing area (width)	0.08 mm – 1.50 mm
Thickness	Epson ClearProof Film, Epson Standard Proofing Paper, Epson Premium Glossy Paper, Epson Proofing White Semimatte
Supported media (selection)	
CONTROL PANEL	2.5" Colour LCD with white backlight
DRIVER	Third party RIP software, Windows communication driver available
INTERFACE	Standard: USB 2.0 High Speed Ethernet 10Base-T/100Base-TX
MEMORY	Printer: 256Mb, Network: 64Mb
DIMENSIONS/WEIGHT	1356 mm x 667 mm x 1209 mm
Dimension (WxDxH)	80 kg
Weight	Dimensions and weight include printer stand and are approximate
ELECTRICAL SPECIFICATIONS	AC 100-240V 50/60Hz
Voltage	Operating: 70W, sleep mode: less than 16W, stand-by: less than 1W
Power consumption	
ACOUSTIC NOISE LEVEL	<50dB(A)
ENVIRONMENTAL CHARACTERISTICS	Operating: 10 to 35°C
Temperature	Storage: -20 to 40°C
Humidity	Operating: 20-80% (no condensation)
	Storage: 5-85% (no condensation)
OPTIONS	SpectroProofer (ILS20EP): 7104892 SpectroProofer with UV cut filter (ILS20EP-UV): 7104893 Roll media adapter: C12C811241 Auto cutter spare blade: C12C815331 Maintenance tank: C12C890191
WARRANTY**	1 year on-site repair Optional extension to 3 years where available



Print size: A1

*Bike image used for print speed testing. Print speeds may vary depending on print conditions.

** Warranty offers are not available for all countries. Please contact your local Epson representative.

EPSON STYLUS PRO WT7900

INK CARTRIDGES

The Epson Stylus Pro WT7900 is supplied with 110 ml starter cartridges

- Photo Black
 - Cyan
 - Vivid Magenta
 - Yellow
 - Light Cyan
 - Vivid Light Magenta
 - Orange
 - Green
 - White
- 2 x cleaning cartridges

Cartridge sizes:

Colour cartridges: 350 ml and 700 ml

White cartridges: 350 ml

Cleaning cartridges: 150 ml



myEpsonPrinter.eu

The Epson Stylus Pro WT7900 includes free access to the 'MyEpsonPrinter.eu' information and management system when purchased with an optional warranty extension. This web-based solution gives you the power to remotely monitor and manage your fleet of Epson large format printers online. Access up-to-date status and job cost information, receive email notification of issues such as low ink levels and keep your printers at their most productive and cost effective wherever you are.

For more details please visit

www.myepprinter.eu

FOR THE BEST RESULTS ALWAYS USE GENUINE EPSON INK AND PAPER.



Better Products for a Better Future



For further information please contact your local Epson office or visit www.epson-europe.com

Austria 0810/20 01 13 (0,07 €/Min.) Belgium 070/350120 (0,1735 €/min.) Czech 800/142 052 Denmark 44 50 85 85 Finland 0201 552 091 France 09 74 75 04 04 (Cost of local call, operator charges may apply) Germany 01805/23 41 10 (0,14 €/Min. aus dem dt. Festnetz, Mobilfunkpreise abweichend. Ab 1.3.2010 Mobilfunkpreis max. 0,42 €/Min.) Greece 210-8099499 Hungary 06800 147 83 Ireland 01 436 7742 Italy 02-660321 10 (0,12 €/min.) Luxembourg 900/43010 (0,24 €/min.) Middle East +9714 8818934 Netherlands 0900-5050808 (0,05 €/oproep + 0,15 €/min.) Norway +47 67 11 37 00 Poland 0-0-800 4911299 (0,16 zł/min.) Portugal 707 222 111 Russia (095) 777-03-55 Slovakia 0850 111 429 South Africa (+2711) 465-9621 Spain 93 582 15 00 Sweden 0771-400135 (Mobilisamtal – 0,99 kr/min, Lokala samtal – 0,30 kr/min, Utlandssamtal – 0,89 kr/min) Switzerland 0848 448820 (4-8 cent./min.) Turkey (0212) 3360303 United Kingdom 0871 222 6702

Trademarks and registered trademarks are the property of Seiko Epson Corporation or their respective owners. Product information is subject to change without prior notice.

EPSON®